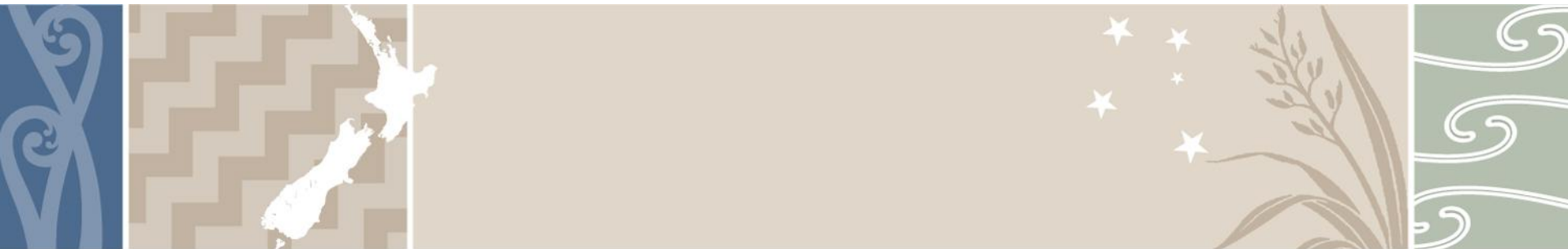




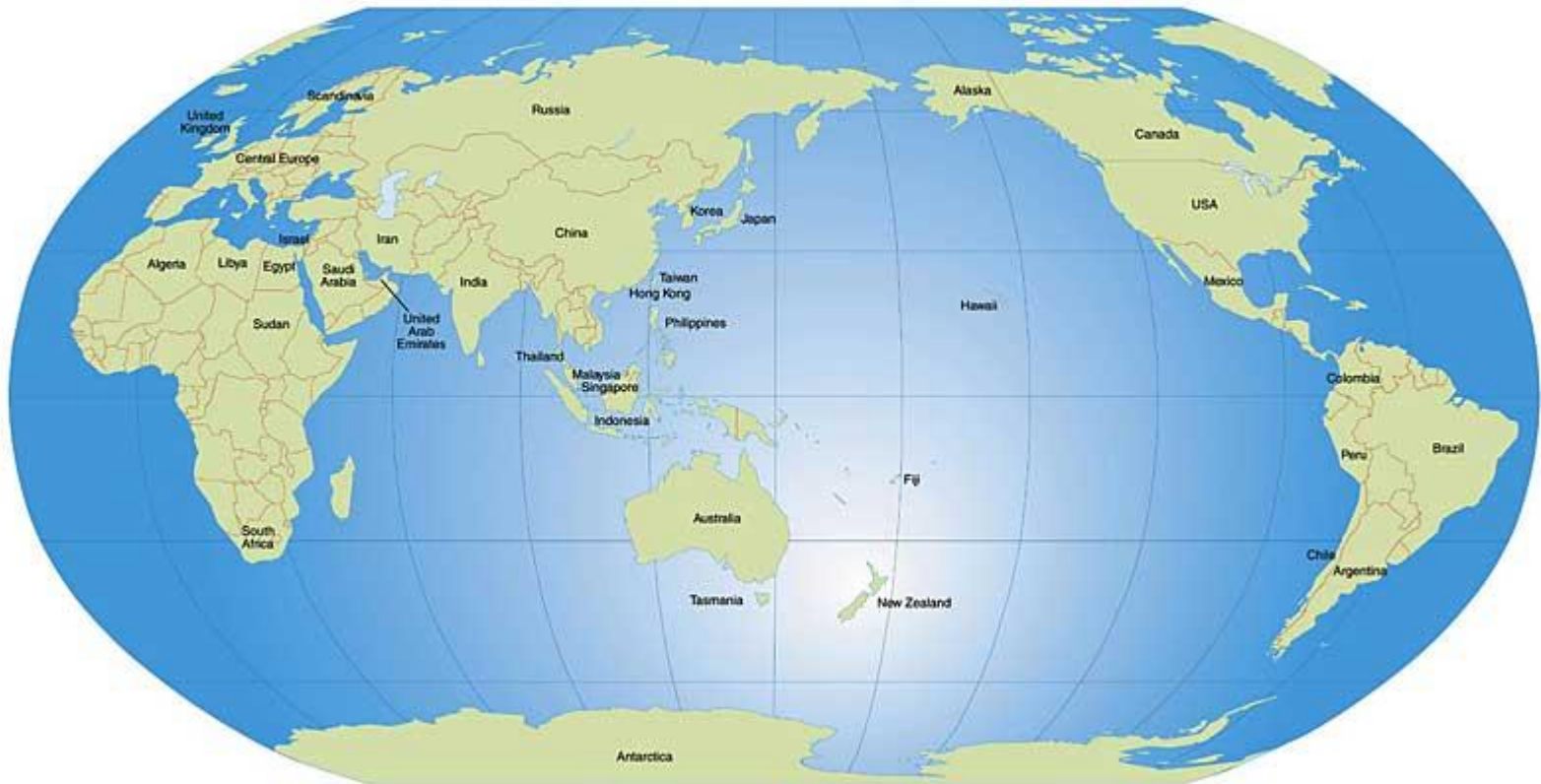
MINISTRY OF
FOREIGN AFFAIRS & TRADE
MANATŪ AORERE

New Zealand's approach to civil maritime enforcement



Mark Pearson, Asia Regional Organisations Unit, MFAT
Presentation to ARF ISM on Maritime Security,
San Francisco, 14-15 June 2012

NZ's maritime environment

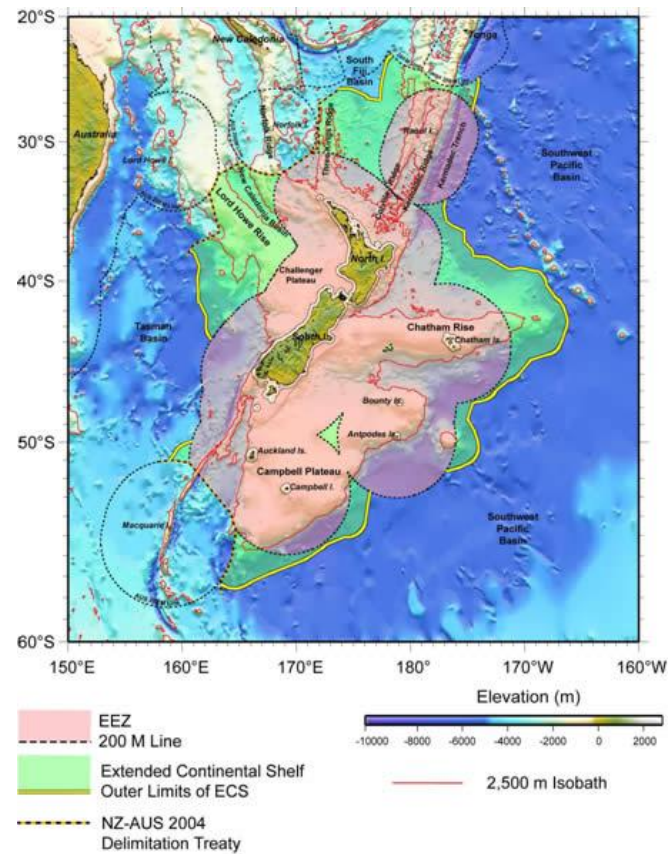


NZ's maritime policy drivers

- 4th largest ocean area in the world (4.5m sq kms)
- Isolated from world trade routes
- Heavily dependent on maritime transport
- A significant, sustainable fisheries industry
- Additional maritime patrol responsibilities in South Pacific and Southern Ocean



New Zealand's EEZ



Key features of New Zealand's approach

- Integrated inter-agency approach to the management of NZ maritime domain
- No national Coast Guard
- Coordination of patrol responsibilities by an inter-agency coordination centre (NMCC)



Agencies with civil maritime enforcement responsibility (1)

- **NZ Customs Service**
 - Ensuring movements of people, goods and craft across the border are legitimate
 - Enforcement interest in drugs, contraband, illegal movements of people etc
- **Ministry of Primary Industries**
 - Manages fisheries in New Zealand and the surrounding EEZ
 - Enforcement interest in IUU fishing



Agencies with civil maritime enforcement responsibility (2)

- **Maritime New Zealand**
 - Responsible for control and safety of shipping in NZ waters, as well as port/ship security
 - Enforcement interest in illegal shipping movements etc
- **New Zealand Police**
 - Responsible for criminal jurisdiction and SAR
 - Enforcement interest in criminal matters



Role of NZ Defence Force

- Patrolling for national defence purposes
- Supplies defence assets for civil maritime patrolling via NMCC
 - P-3K Orion
 - inshore/offshore patrol vessels



Interagency coordination (1)

(1) Committee for Domestic and External Security Coordination

- coordinates government responses to challenges to national security
- managed by Department of PM and Cabinet
- involves all relevant government agencies
- lead agencies are appointed to manage specific issues, eg for border violations: Customs Service is the lead agency, working with Police, Immigration Service etc.



Interagency coordination (2)

(2) National Maritime Coordination Centre (NMCC)

- Managed by Customs, co-located with NZ Defence Force
- Collates information on NZ's maritime domain
- Whole-of-government approach to threat assessment
- Deploys patrol assets (mainly NZ Defence Force) in response to tasking by civilian agencies



PING AN HAI case

- NMCC finds the vessel anchored in NZ waters
- Customs Service confirms breach of NZ law
- NMCC tasks navy patrol craft to inspect
- Maritime NZ confirms reason for the vessel's presence and no pollution risk
- Customs orders the vessel into port



International cooperation

- Cooperation with Australian maritime agencies
- Contact with Pacific Island counterparts through Pacific Forum
- Bilateral police and customs liaison
- Contribution to Information Fusion Centre (Singapore)

