

The outline of Response to Great East Japan Earthquake in 2011

***ARF Workshop on Multi-Year Strategic Exercise Plan
9-10 April Kuala Lumpur***

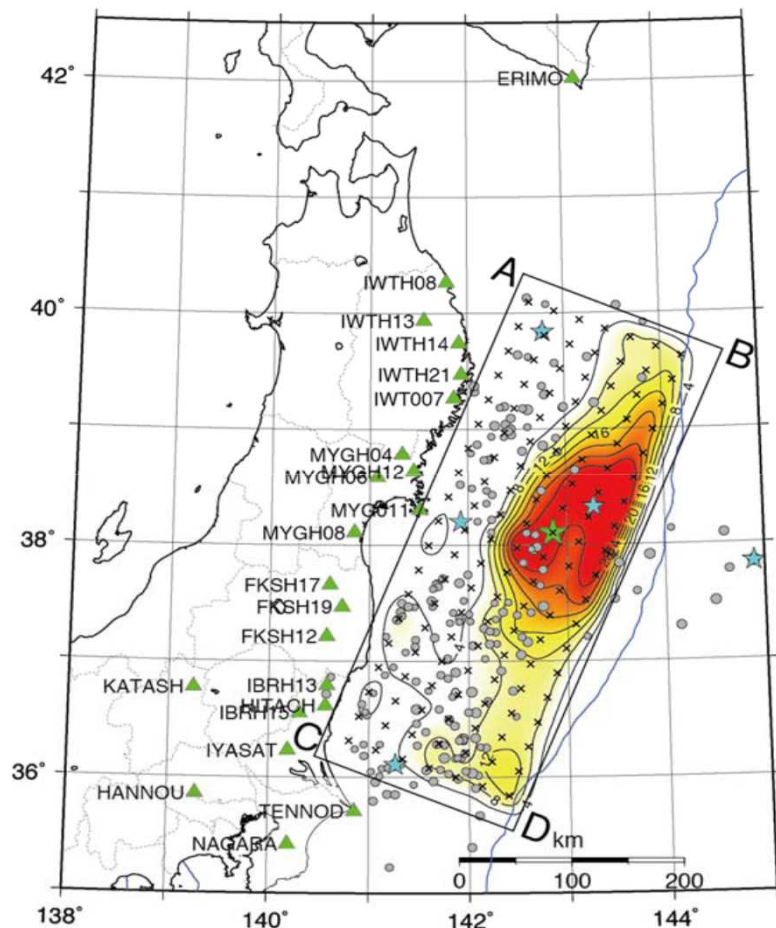
Kenichi Katagiri
National security Policy Division
Foreign Policy Bureau
Ministry of Foreign Affairs, Japan

Contents

- Out line of Great East Japan Earthquake
- Response to Great East Japan Earthquake
- International Reliefs for Japan
- Challenges and International Cooperation

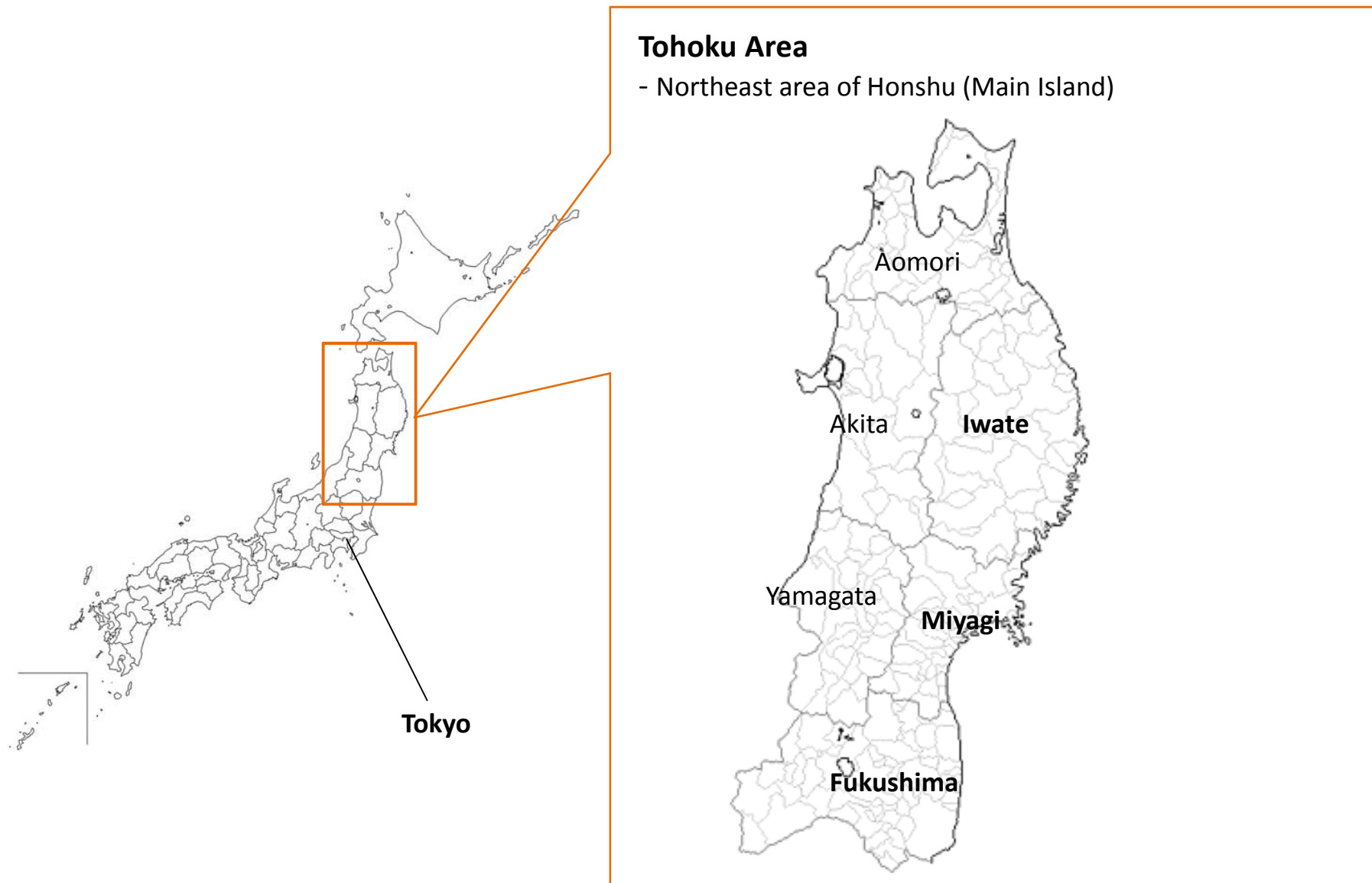
Outline of Great East Japan Earthquake-1

One of the most devastating disasters after World War II in Japan with massive earthquake and tsunami



- Occurred on 11 March 2011, 2:46pm
- Moment Magnitude 9.0
- Dead 15,890
- Missing 2,589
(as of 9 March 2015)
- Affected ten prefectures

Outline of Great East Japan Earthquake-2



Outline of Great East Japan Earthquake-3

Tsunami Disaster

Photo taken at Miyako City, Iwate Prefecture
Courtesy of Tarocho Fisheries Cooperative Association

Enormous tsunami, higher than 20meters,
was generated by the earthquake.



Outline of Great East Japan Earthquake-4

Catastrophic Damage

Photo taken at Kesenuma City, Miyagi Prefecture on 14 March
Courtesy of Tokyo Fire Department



Outline of Great East Japan Earthquake-5

Widespread Inundation

Aerial Photo around Miyagi Prefecture

12 March 2011



Response to Great East Japan Earthquake-1

Rescue teams rushed to the affected area

Photo provided by Tokyo Fire Department



Kesennuma City, Miyagi Prefecture

Deployed staffs and assets

As of 9 March, Extreme Disaster Management HQ

- **National police Agency**
Deployed about 120,300 staffs (cumulative total)
- **Fire and Disaster Management Agency**
Deployed 30,684 staffs / 8,854 teams (cumulative total)
- **Japan Coast Guard**
Deployed 35,734 vessels, 12,956 aircrafts, 2,526 staffs of the special rescue teams (cumulative total)

On-site headquarter



Response to Great East Japan Earthquake-2

Relief Operation by Japan's Self-Defense Force (JSDF)

Searching missing people, supporting evacuation, supplying water and reliefs ...

Lives-saved:	19,286 people
Bodies recovered:	9,505 bodies
Goods transported:	13,906 t
Water supplied:	32,985 t
Meals supplied:	5 million meals
Bathing support:	1.09 million people
Personnel:	about 10.58 million (cumulative total)



Supplying water and conveying relief supplies



Search for missing, Saving-Lives, Evacuation



Response to Great East Japan Earthquake-3

“Miracle of Kamaishi” : a good practice of disaster education

All students in Kamaishi City evacuated safely just before the tsunami reached on 11 March 2011.



©Kamaishi Higashi Junior High School

International Reliefs for Japan-1

- **163 countries** and **43 relevant entities** offered to provide relief money and supplies
(As of 28 December 2012)
- **24 countries and areas** deployed their rescue or medical teams to Japan
(As of 30 January 2012)
- At least **43 NGOs from 16 countries** are known to have arrived in Japan for relief activities
(As of 5 February 2015)

International Reliefs for Japan-2

- *Military – Military cooperation*
 - JSDF operated in close cooperation with the U.S and Australia's military

- *Cooperation with International entities*
 - Japan International Cooperation Agency (JICA) cooperated with UNDAC by providing logistic support

International Reliefs for Japan-3

International rescue, medical and experts teams deployed from overseas-1

 Republic of Korea	107 rescue workers, 2 rescue dogs 12-23 March 2011, in Sendai City and Tagajyo City, Miyagi Prefecture	 United Kingdom	77 rescue workers (including 8 presses), 2 rescue dogs 15-17 March 2011, in Ofunato City and Kamaishi City, Iwate Prefecture	Taiwan	28 rescue workers 16-18 March 2011, in Natri City and Iwanuma City, Miyagi Prefecture
 Singapore	5 rescue workers, 5 rescue dogs 13-15 March 2011, in Souma City, Fukushima Prefecture	 Mexico	12 rescue workers, 6 rescue dogs 15-17 March 2011, in Natori City, Miyagi Prefecture	 Russia	155 rescue workers (First deployment:75, Second deployment:80) 16-18 March 2011, in Ishinomaki City, Miyagi Prefecture
 Germany	41 rescue workers, 3 rescue dogs 14-15 March 2011, in Minami-Sanriku Town, Miyagi Prefecture	 Australia	72 rescue workers, 2 rescue dogs 16-19 March 2011, in Minami-Sanriku Town, Miyagi Prefecture	 Mongolia	12 rescue workers 17-19 March 2011, in Natori City and Iwanuma City, Miyagi Prefecture
 Switzerland	27 rescue workers, 9 rescue dogs 14-16 March 2011, In Minami-Sanriku Town, Miyagi Prefecture	 New Zealand	52 Rescue Workers 16-18 March 2011, in Minami-Sanriku Town, Miyagi Prefecture	 Turkey	32 rescue workers 20 March – 8 April 2011, In Tagajyo City, Ishinomaki City and Shichgahama Town, Miyagi Prefecture
 United States	144 rescue workers, 12 rescue dogs 15-19 March 2011, in Ofunato City and Kamaishi City, Iwate Prefecture	 France	134 rescue and relevant workers 16-23 March 2011, in Natri City, Miyagi Prefecture and Hachinohe City, Aomori Prefecture	 Indonesia	11 rescue workers, medical and relevant workers 19-23 March 2011, in Kesenuma City, Shiogama City and Ishinomaki City, Miyagi Prefecture
 China	15 rescue workers 14-20 March 2011, in Ofunato City, Iwate Prefecture	 Italy	6 researchers and experts 16-21 March 2011, in Tokyo	 South Africa	45 rescue workers 19-25 March 2011, in Iwanuma City, Natori City, Tagajyo City and Ishinomaki City, Miyagi Prefecture

* The dates in the table shows the durations of operations or activities.

International Reliefs for Japan-4

International rescue, medical and experts teams deployed from overseas-2

 Israel	53 medical support workers 29 March – 10 April 2011, in Minami-Sanriku Town, Miyagi Prefecture
 India	46 disaster response workers 29 March – 6 April 2011, in Onagawa Town, Miyagi Prefecture
 Jordan	4 medical workers 25 April – 12 May 2011, in Fukushima Prefecture
 Thailand	2 medical teams (2 workers × 2) 8 May – 3 June 2011, in Fukushima Prefecture
 Sri Lanka	15 officials (Reconstruction support team) 12 May – 1 June 2011, in Ishinomaki City, Miyagi Prefecture
 Philippines	3 medical support workers 28 June – 11 July 2011, in Iwate and Miyagi Prefecture

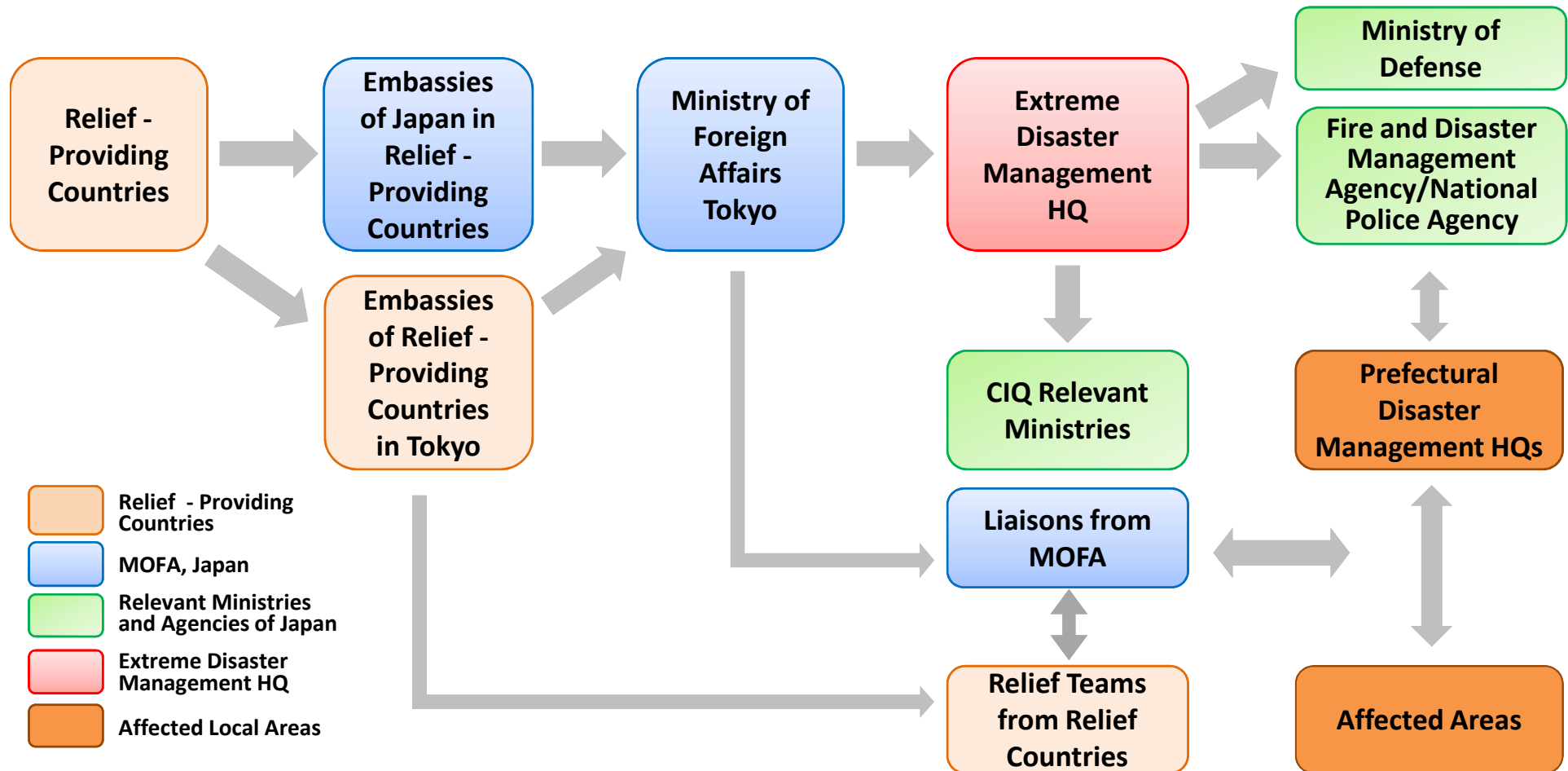
 UNDAC	7 Coordinators and experts 13-23 March 2011, in Tokyo
 UNOCHA	3 Coordinator and experts 23 March – 2 April in Tokyo (visiting Iwate and Miyagi Prefecture)
 WFP	25 coordinators 15 March – 31 July 2011, in Tokyo, Miyagi, Iwate and Fukushima prefecture

* The dates in the table shows the durations of operations or activities.

International Reliefs for Japan-5

Coordination Flowchart

– Receiving International Reliefs for the Great East Japan Earthquake



Challenges and International Cooperation

- *Extreme Disasters which could occur in the future*
 - [Nankai-Trough Great Earthquake](#)
 - [Tokyo Inland Earthquake](#)
- *Efficient practice in receiving International Reliefs*
 - Pursue [more efficient practice](#) for receiving international assistances and collaborating with relevant international entities
- *International Cooperation*
 - “The Third UN World Conference on Disaster Risk Reduction” was successfully held in Sendai City on 14 -18 March 2015 and concluded by adopting the “[Sendai Framework for Disaster Risk Reduction 2015 -2030](#)”

Thank you for attention