



MENTAWAI MEGATHRUST DIREX 2013-2014



ARF Workshop on Multi-Year Strategic Exercise Plan
Istana Hotel -Kuala Lumpur
April 2015



URGENCY

**Scientific Research
on Megathrust
Mentawai –**
preparedness
measures to reduce
risks faced by people
in West Sumatra

**Presidential
Directive:**
November 2011 in
Bali – Joint Paper
Australia - Indonesia

Results of Field
Assessment
**Post Aceh 8,5 RS EQ-
11 April 2012 –**
Master Plan on
Tsunami DRR



THEME ,OBJECTIVE & TARGETS

Strengthening Collaboration and Partnership in Disaster Response to Build a Resilient Region.

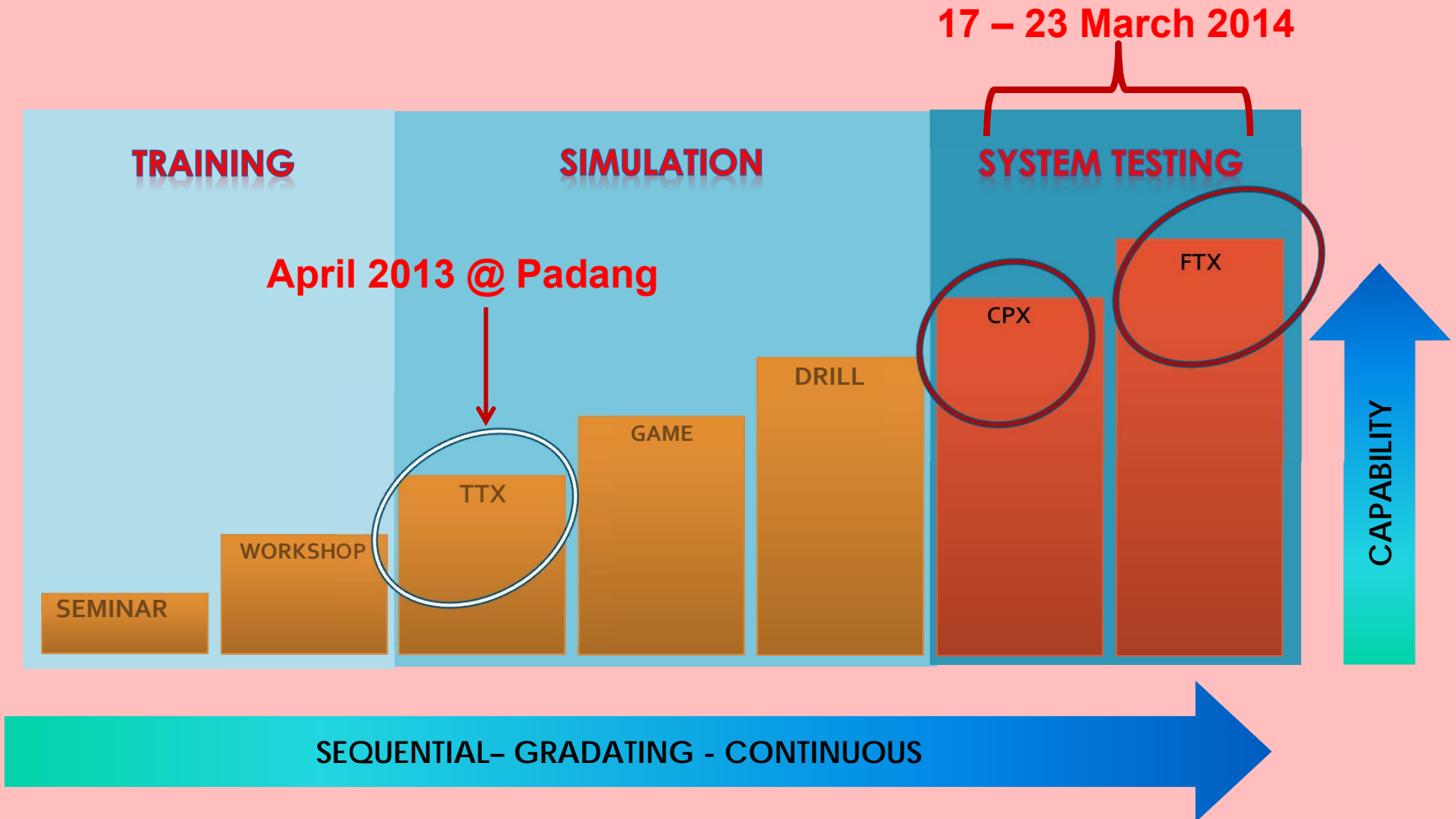
Target 1:
achievement of effective
information sharing mechanism

Target 2: enhanced capacity, cooperation and partnership in disaster management in the region

Target 3:
Tested admission procedure of foreign aid (civil and military) in response to natural disaster

Target 4:
Tested operational integration between incident command system of the affected countries with systems of other countries in the region when providing assistance

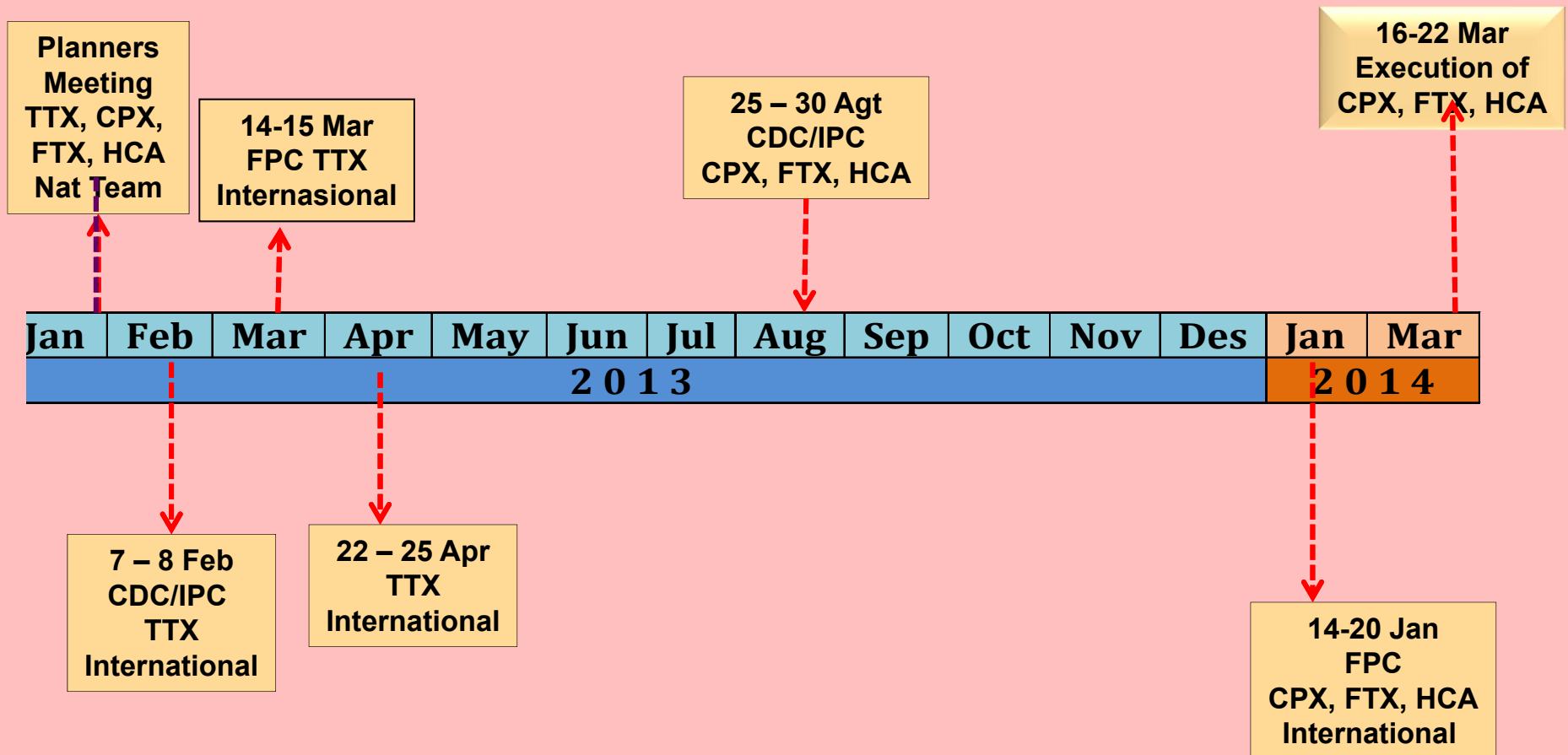
METHODS OF EXERCISE



TYPE OF EXERCISE THAT CAN BE CONDUCTED WHETHER CONTINGENCY PLAN IS IN EXISTENCE OR NOT

TYPE OF EXERCISE THAT CAN BE CONDUCTED ONLY WHEN CONTINGENCY PLAN IS IN EXISTENCE

MM DIREx's Preparation steps 2013 - 2014





OBJECTIVES FOR EACH ACTIVITY

CPX

- To enhance the capacity and capability of those in command and decision making positions in operation planning process

FTX

- To enhance the capacity and capabilities of humanitarian actors (civil and military) involved in disaster response, as means to strengthen the preparedness measures in anticipating the potential risk of disaster

Comm Self-Evac Exercise

- To enhance community preparedness in responding to tsunami warning system as part of building "resilient village"

HCA

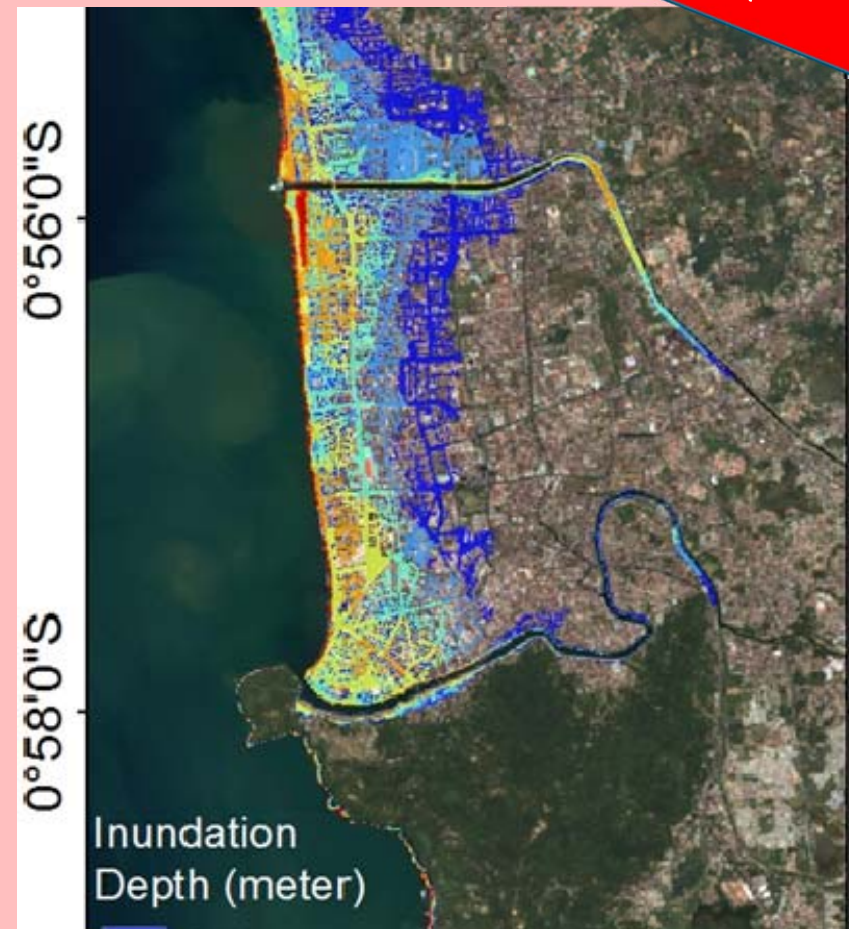
- To provide support for local community in enhancing their resilience from disaster

REASONS FOR CHOOSING MENTAWAI MEGATHRUST



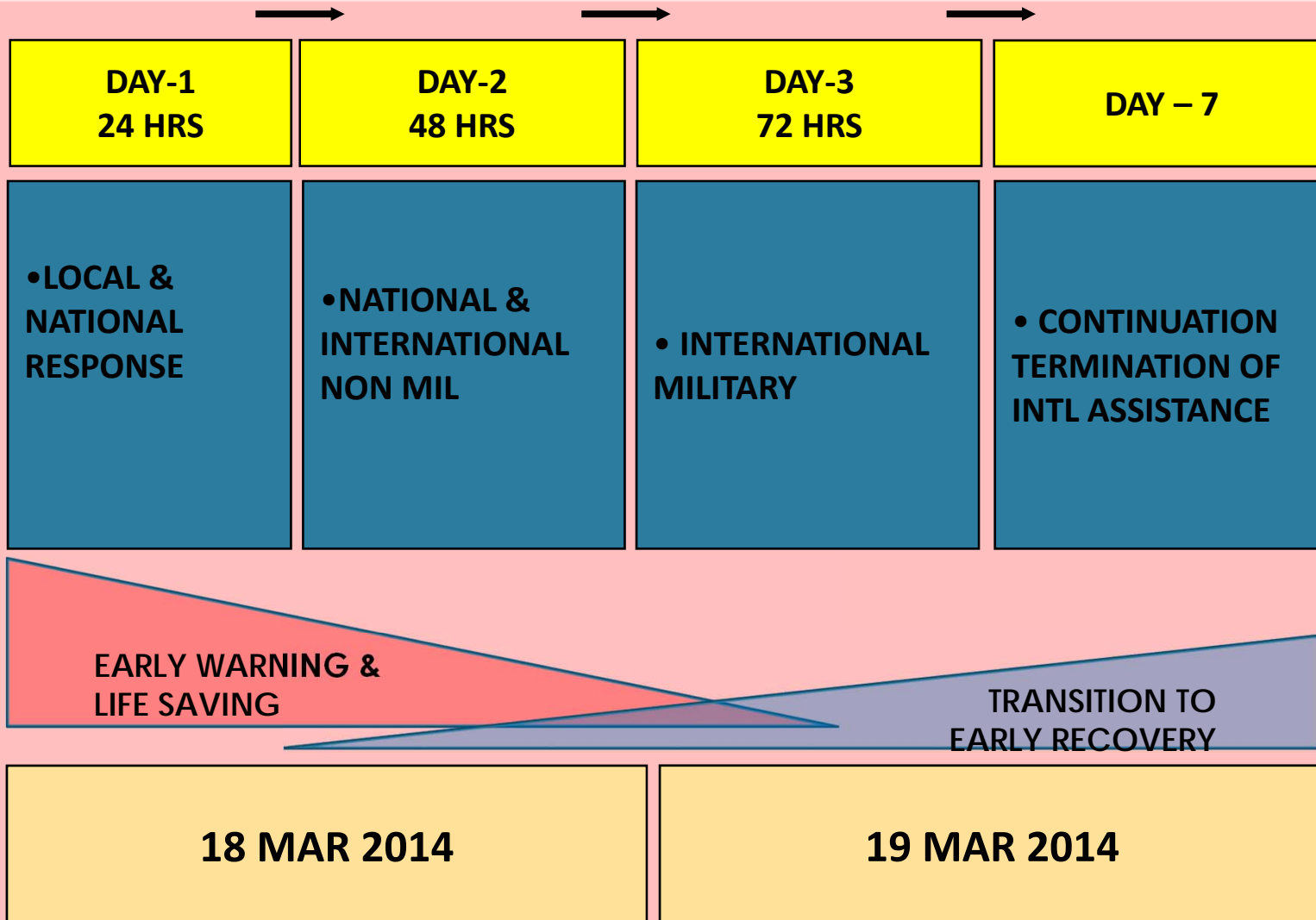
Real threat & scientific based

- Posing the high risks of 8.9 RS earthquake that triggers tsunami along the coastal areas of West Sumatra
- Vulnerability: topographic condition, limited infrastructures and facilities for evacuation, preparedness and readiness of local government and community in undertaking safe evacuation, etc.
- Approximately 1,214,234 people living in West Sumatra are at risks as 50% of them are residing in Padang City





PHASE & FOCUS



EMERGENCY MANAGEMENT SYSTEM



NATL

Provision of required clearance/permits, etc



Agency Administrators/ Executives

MAC to host OSOCC/AHA Center/ Military Coordination Center to support → Area Command in allocating resources as required by each IC



Area Command

MAC CENTER

National Forward Coordination Center

AHA Center & OSOCC

Coord Centre for Military Assistance

PROV

District/ City

Incident Command Padang

Incident Command Mentawai



CONCLUSION

- The top Leader's directive
- The Exercise's Scenario should Real threat & scientific based
- The relevant personnel in planning process
- The Conduct of CPX & FTX including Community Self Evacuation



National Disaster Management Authority

THANK YOU