

A photograph of a busy outdoor fish market in Thailand. In the foreground, a woman wearing a red apron and black gloves is weighing a large fish on a green mechanical scale. The scale has a white dial with red markings. To her left, a large pile of fish, likely mackerel, is spread out on a wooden table. In the background, other workers are visible, some wearing aprons and gloves, and there are blue plastic bins and a covered walkway. The scene is set under a large, open-sided structure with white pillars.

Thailand's fisheries reform: Fighting IUU fishing and forced labour

April 2016

COMMAND CENTER FOR COMBATING ILLEGAL FISHING

COMMAND CENTER FOR COMBATING ILLEGAL FISHING

CCCIF AND THAI-MECC: COOPERATION TOWARDS SAFE, SECURE, AND PROSPEROUS SEA

- Established: 1 May 2015
- Endorsed by: The National Council for Peace and Order no 10/2558
- Mandate
 - I. Stipulate Thailand NPOA-IUU and supervise the implementation of the plan
 - II. Supervise and coordinate all operations of every government agencies related to combating IUU fishing
 - III. Recommend, improve, amend and develop laws and regulations relating to the combating illegal fishing to meet international standards
 - IV. Set up of Port-In Port-Out Controlling Centers
 - V. Coordinate with relevant agencies to heighten cooperation with **third countries**, especially those which fishing vessels flying Thai flag operate in their maritime zones, in line with international obligations

Prime Minister

National Steering Committee on
Human Trafficking and IUU Fishing

Chairman: PM

Sub- Steering Committee
on IUU Fishing

**Chairman: Minister of
Agriculture**

National
Policies

CCCIF

RTN C-In-C

CCCIF COMMITTEE

CCCIF SECRETARIAT

POLICY LEVEL

OPERATIONS

**Legislation
and
Legal
Affairs**

**Public
Relations**

THAI-MECC
(Laws Enforcement)

**Coordination
with
Competence
Agencies**

**Department of
Fisheries**

Marine Department

Ministry of Internal
Affairs

Ministry of Labors

THAILAND MARITIME LAWS ENFORCEMENT COORDINATING CENTER (THAI-MECC)

CCCIF AND THAI-MECC: COOPERATION TOWARDS SAFE, SECURE, AND PROSPEROUS SEA



THAI-MECC



RTN



Fishery Depy



Coastal and
Maritime resources



Marine Dept



Marine Police



Customs

- Established 1996
- Integrated maritime laws enforcement efforts by coordinating among 6 maritime agencies
 - Royal Thai Navy
 - Royal Thai Marine Police
 - Maritime Department
 - Department of Fisheries
 - Customs Department
 - Department of Coastal and Marine Resource
- 20+ Related agencies
- RTN is a focal point
- Maritime Information Sharing Center

THAILAND MARITIME LAWS ENFORCEMENT COORDINATING CENTER (THAI-MECC)

CCCIF AND THAI-MECC: COOPERATION TOWARDS SAFE, SECURE, AND PROSPEROUS SEA

Threats Level



Anti-Piracy and Armed Robbery



Illegal Fishing



Slavery and human trafficking



Terrorism at sea



Illegal Smuggling



Illegal Migrants



Search and Rescue



Disaster Relief



Environmental Laws



STRATEGIC APPROACH

Secretariat Office
Command Center for Combating Illegal Fishing

THAILAND STRATEGIC APPROACH

TO ELIMINATE IUU FISHING AND FORCED LABOR IN FISHING INDUSTRIES



**End states: The sustainable use of maritime resources
Protection of workers, regardless of their nationality**



THAILAND STRATEGIC APPROACH

TO ELIMINATE IUU FISHING AND FORCED LABOR IN FISHING INDUSTRIES

2015

Phase I

- Reformation of Laws and Fisheries Management Tools

Outputs

- Royal Ordinance on Fisheries 2015
- Ministerial Regulations on the Labour Protection in Sea Fishery Work 2014
- Marine Fisheries Management Plan

2016

Phase II

- Strict laws enforcement
- Implementation of mitigation measures

Being carried out

- Inspections at port, at sea and at factories
- Reduction of fishing efforts
- Protection of labors
- Severe penalty to serious infringements, especially overseas FVs

2017

Phase III

- Maintain towards sustainability and wellbeing of the workers

To be carried out

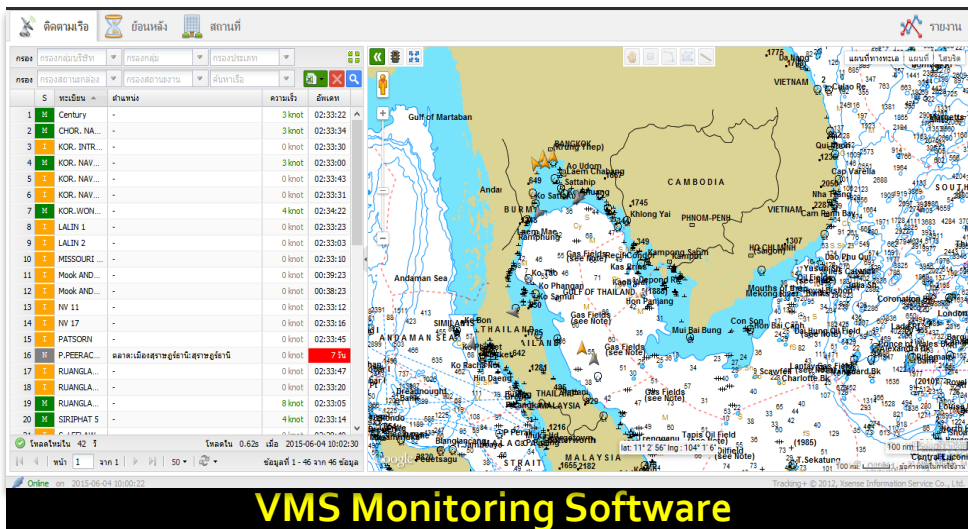
- Best practices on management of labors and fisheries

KEY TOOLS

TO ELIMINATE IUU FISHING AND FORCED LABOR IN FISHING INDUSTRIES

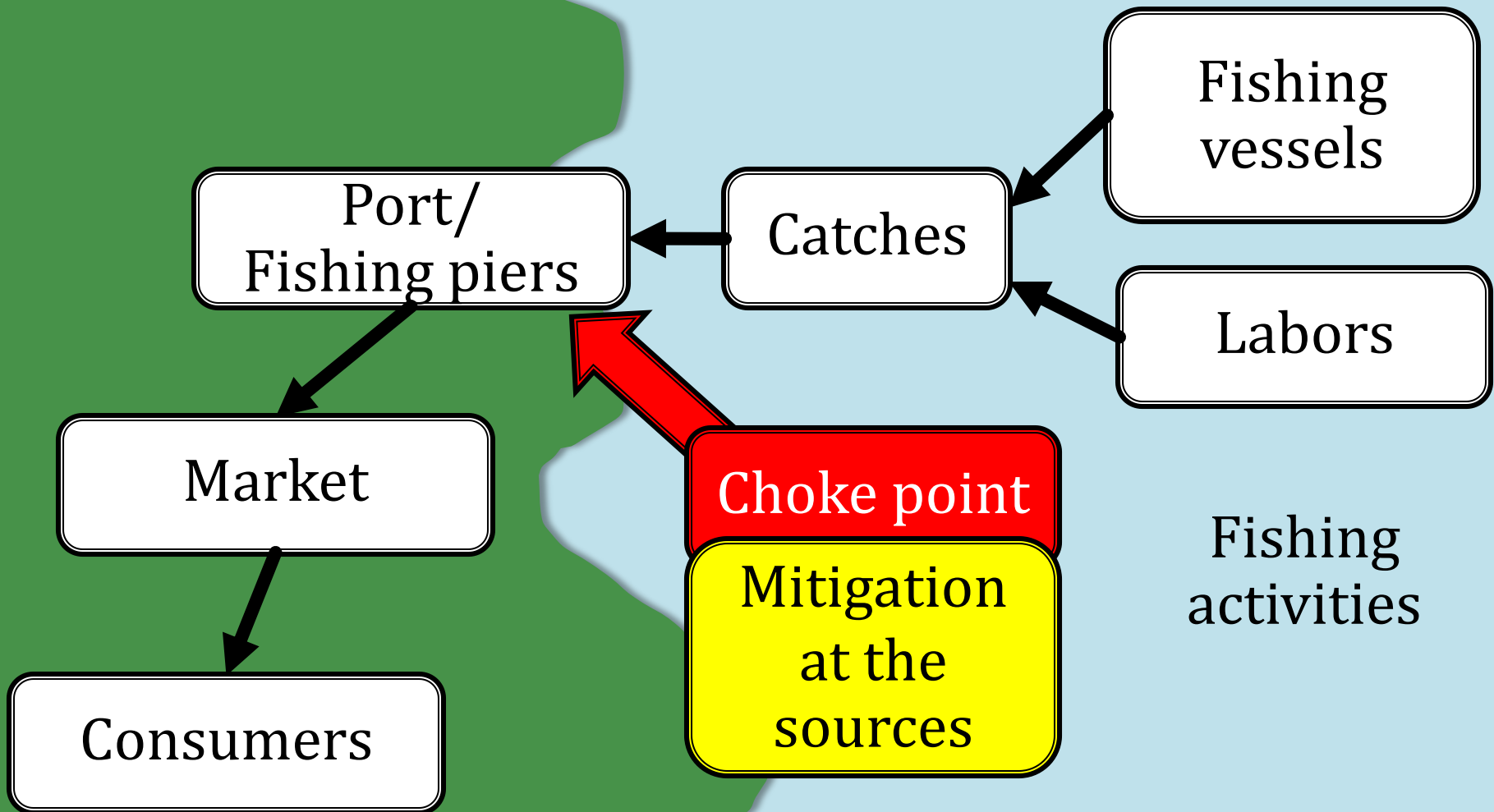


- **Port In Port Out Controlling Centers**
 - 28 Centers
 - Additional 4 centers in 2016
- **Vessel Monitoring System**
- **Multi-disciplinary inspection team**
 - At sea
 - At port
 - At seafood processing factories
- **Long range operations**
- **Integrated vessel-crew database system**



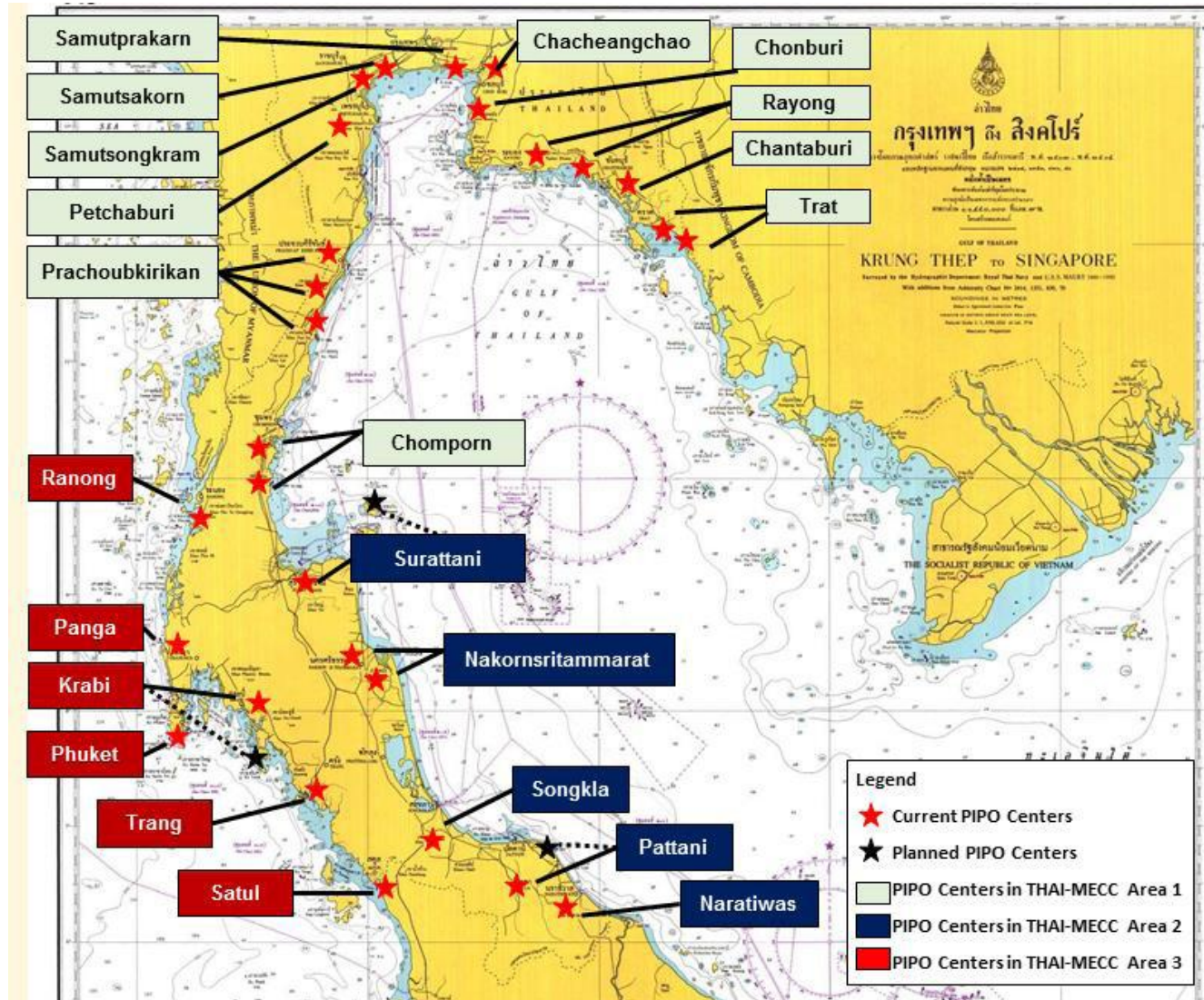
PORT-IN PORT-OUT CONTROLLING CENTERS

KEY TOOLS



PORT-IN PORT-OUT CONTROLLING CENTERS

TO ELIMINATE IUU FISHING AND FORCED LABOR IN FISHING INDUSTRIES



ENFORCEMENT RESULTS

TO ELIMINATE IUU FISHING AND FORCED LABOR IN FISHING INDUSTRIES



Intercepted TIP violators at sea, Kantang Case, Nov 2015, CCCIF

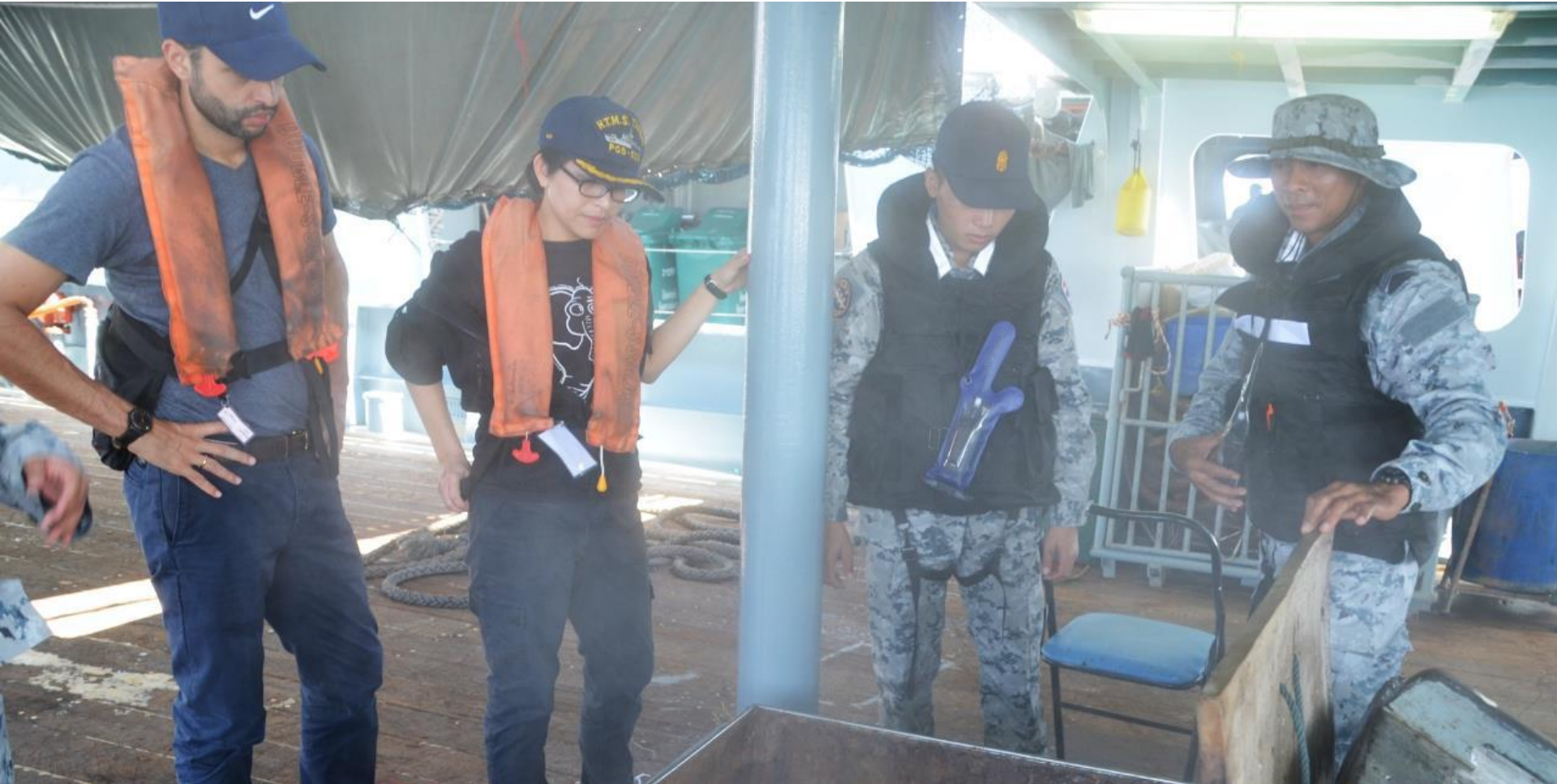


Lookyord Dried Jelly fish plant, indicted for 12 child labors, plant was closed down, Nov 2015

- 88% of overseas fishing fleet was inspected.
- 39 Thai overseas fishing vessels were indicted and 6 vessels were listed in the IUU vessels list
- Since May last year, 572 FVs operating in Thai waters
- 150 factories were inspected for welfare and protection of workers
- 17 factories closed down or suspended its operations

COOPERATIONS

TO ELIMINATE IUU FISHING AND FORCED LABOR IN FISHING INDUSTRIES



Representatives of ILO observed the Sea Multi-disciplinary Inspection Team inspecting overseas fishing vessels in Andaman Sea, during 2-5 January 2016.



FISHERIES REFORM



OFFICE OF CCCIF SECRETARIAT
COMMAND CENTER FOR COMBATING ILLEGAL FISHING

ROYAL ORDINANCE ON FISHERIES 2015

DEPARTMENT OF FISHERIES



- **Reform fisheries management regime**
 - Scientific approach using MSY as a reference point
 - Limited access of commercial fisheries to achieve sustainable fisheries management
 - Control on Thai overseas fishing vessels
- **Improve labors protection scheme**
- **Upgrading monitoring, control and surveillance through VMS system**
- **Ensuring of traceability products**

VESSEL MONITORING SYSTEM

DEPARTMENT OF FISHERIES



Nationwide VMS Control Center, Bangkok, is monitored 24/7

THAI-MECC MARITIME INFORMATION SHARING CENTER

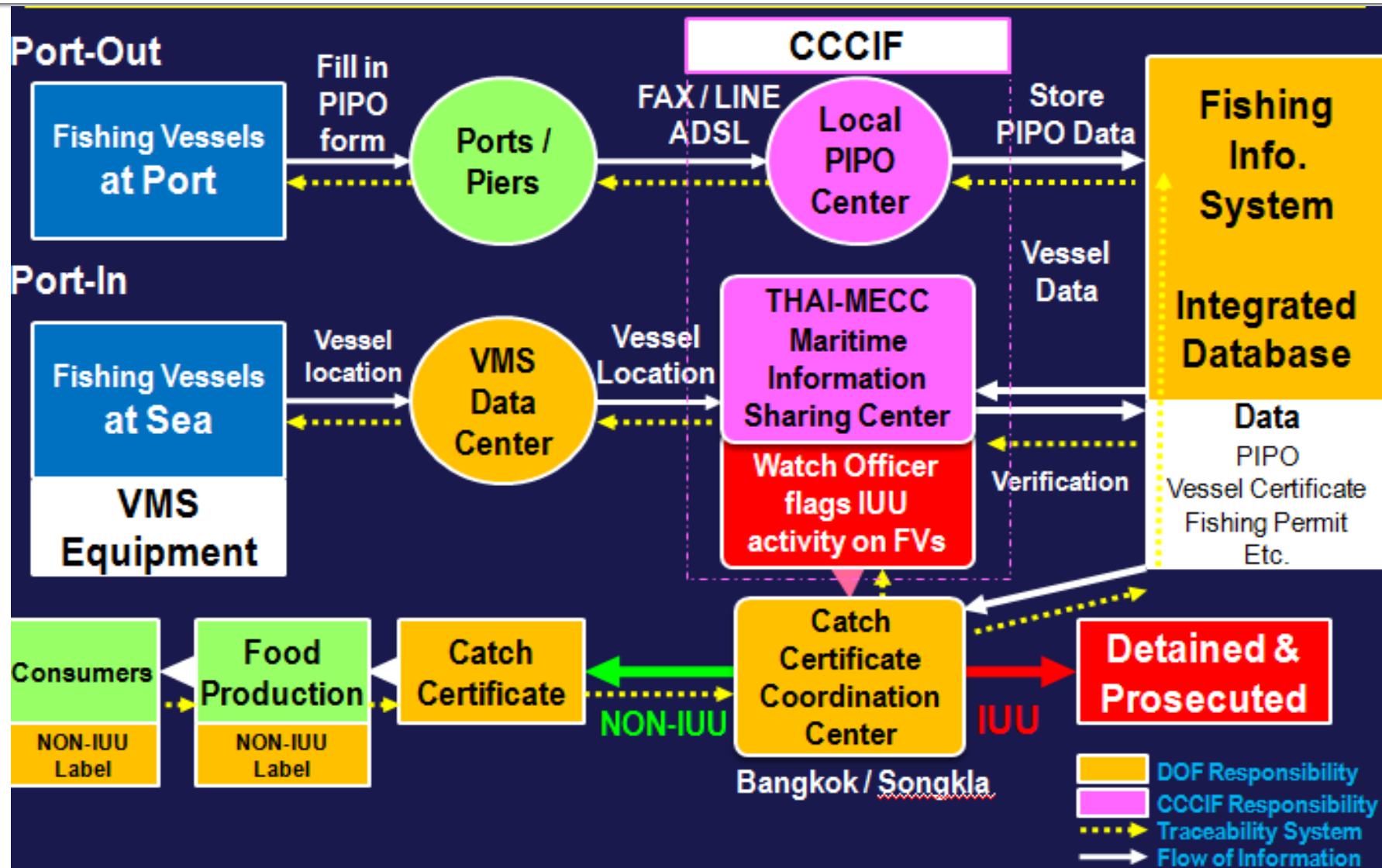
CCCIF AND THAI-MECC: COOPERATION TOWARDS SAFE, SECURE, AND PROSPEROUS SEA



MISC coordinates on the use of maritime assets to patrol and interdicts any

E-TRACEABILITY SYSTEM

DEPARTMENT OF FISHERIES



A group of young men are standing on the deck of a fishing boat. The boat is white with a blue stripe and has the number '20-21' and '10380' written on its side. The men are dressed in casual clothing, including tank tops and t-shirts. The background shows a cloudy sky and the ocean.

CURRENT OPERATIONS

LABOR ISSUE

OFFICE OF CCCIF SECRETARIAT
COMMAND CENTER FOR COMBATING ILLEGAL FISHING

REGULARIZATION OF UNDOCUMENTED MIGRANT WORKERS

MINISTRY OF LABOR



Prevalent Misunderstanding

- Nearly all of migrant workers in Thailand are voluntary registered and legally approved by the authorities.
- Register to provide the protections under the laws
- Prevent them to fall into human trafficking

As of Feb 2015

- Total 148,842 workers
 - (1) Fishing vessels: 91,530 workers
 - (2) Seafood plants: 57,312 workers



FRAMEWORK ON MIGRANT WORKERS MANAGEMENT

MINISTRY OF LABOR



Registered migrant workers are being protected by laws and prevented to be involved in human trafficking

A photograph showing a ship's deck. In the background, three crew members in dark uniforms and caps stand near a piece of equipment. In the foreground, a large group of shirtless men, likely crew or detainees, are gathered together. The scene is dimly lit, suggesting dusk or dawn.

LAWS ENFORCEMENT

OFFICE OF CCCIF SECRETARIAT
COMMAND CENTER FOR COMBATING ILLEGAL FISHING

INSPECTIONS OF THAI-FLAGGED OVERSEAS FVs

DEC 2015 – JAN 2016

LONG RANGE OPERATIONS



INSPECTIONS OF THAI-FLAGGED OVERSEAS FVs

DEC 2015 – JAN 2016

LONG RANGE OPERATIONS



LEGAL ACTIONS

MAY 2015 – APRIL 2016

LONG RANGE OPERATIONS

	Number of Cases	Inquiry official	Public Attorney	Court of Law	Completion
Fishing vessels operating outside Thai waters	75	37	38	0	0
Fishing vessels in Thai waters	588	510	13	0	65
Seafood processing Establishment	29	17	7	5	0
Human trafficking in Fisheries	43	21	8	12 (1 case, dropped)	1
Total	735	585	66	18	66

HUMAN TRAFFICKING CASE IN FISHERIES SECTOR 2014/15

ANTI-HUMAN TRAFFICKING IN FISHERIES SECTOR

Year	Number of Cases	Victims	Location of Cases		Progress			
			Fishing Vessel	Pre-processing Establishment	Inquiry officers	Prosecutor	Court of Laws	
							On Trial	Complete
2014	9	24	9	-	1	2	2	4
2015	41	110	39	2	22	6	13	1

INSPECTION OF FISHING VESSELS IN THAI WATER

RESULT LAWS ENFORCEMENT AT SEA: BETWEEN 23 NOV 2015 – 11 JAN 2016

- **Kantang Case**
 - 11 November 2015, 11 land premises and 3 vessels were searched
 - Syndicate networks were arrested, 10 suspected charged with human trafficking



Human Trafficking Case
Indicted and under prosecution



**“Thailand is committed to overhauling this situation
And setting Thai fisheries on the
path to sustainability.”**



COMMAND CENTER FOR COMBATING ILLEGAL FISHING AND

THAILAND MARITIME ENFORCEMENT COORDINATING CENTER

COOPERATION TOWARDS SAFE, SECURE, AND PROSPEROUS SEA

COMMANDER PIYANAN KAEWMANEE

PLAN AND POLICY, OFFICE OF CCCIF SECRETARIAT

PLAN AND POLICY, THAI-MECC

HEAD OF POLICY AND STRATEGY, MARITIME SECURITY DIVISION, OFFICE OF SECURITY AFFAIRS,
NAVAL OPERATIONS DEPARTMENT