



COMMISSION SOUS-RÉGIONALE DES PÊCHES
SUB-REGIONAL FISHERIES COMMISSION



WORKSHOP ON ILLEGAL, UNREPORTED AND UNREGULATED FISHING:

IUU Fishing as an Emerging Transnational Organized Crime

Bali, Indonesia, 19-21 April 2016

SUB REGIONAL FISHERIES COMMISSION EFFORTS IN ADDRESSING IUU FISHING

Babacar BA

**Chef du Département Suivi, Contrôle et Surveillance de l'Aménagement
des Pêches de la CSR/P**

Tel: 00 221 77 649 39 88 / 00 220 76 12 314

[babacar.ba @spcsrp.org](mailto:babacar.ba@spcsrp.org)



COMMISSION SOUS-RÉGIONALE DES PÊCHES
SUB-REGIONAL FISHERIES COMMISSION

Summary

1. Context

- General context of Fisheries in the area of SRFC
- Geostrategic context
- Socio-economic
- Mission

2. Problems

- History of IUU fishing in the SRFC area
- Consequences of IUU fishing

3. Elements of the strategy against the PINN

- IUU fishing threats
- The means to fight against IUU fishing
- The sub regional operational mechanism
- Operational postures
- The goals

4. Ongoing activities

5. Prospects





COMMISSION SOUS-RÉGIONALE DES PÊCHES
SUB-REGIONAL FISHERIES COMMISSION

The Sub Regional Fisheries Commission (SRFC)

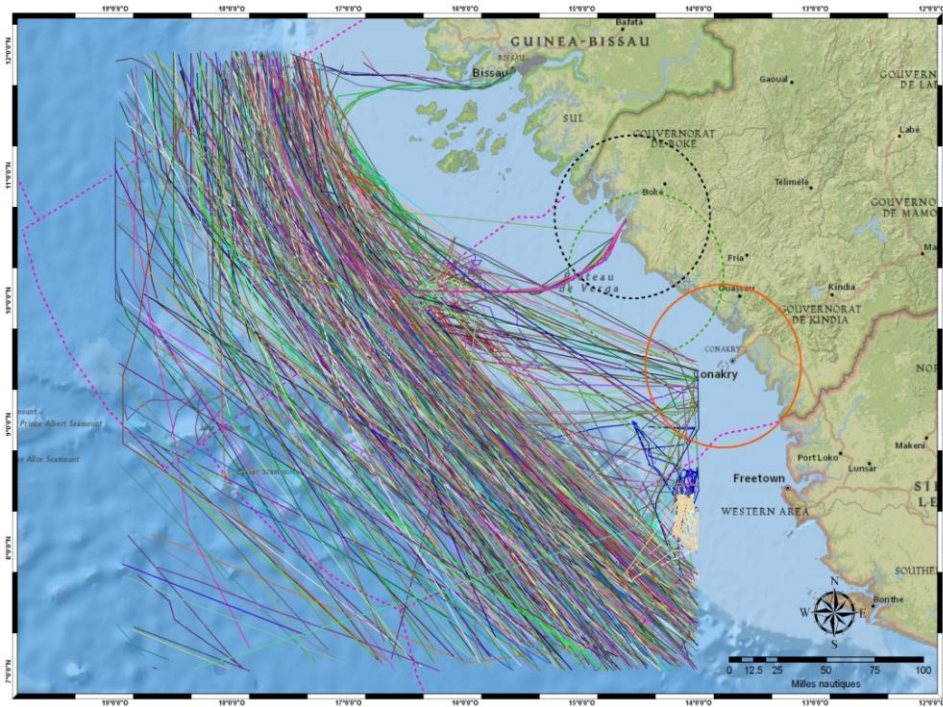
- Intergovernmental body
- Created in March 29, 1985 through Convention
- Member states : Cabo Verde, Gambia, Guinea, Guinea Bissau, Mauritania, Senegal and Sierra Leone
- Headquarters in Dakar, Senegal
- **Website : www.spcsrp.org**



COMMISSION SOUS-RÉGIONALE DES PÊCHES
SUB-REGIONAL FISHERIES COMMISSION

GEOSTRATEGIC CONTEXT

- ❑ **Coastline** : about 3,500 km;
- ❑ **Total EEZ** : estimated 1.6 million km²;
- ❑ **Population**: about 32 million people (70% live near the coast).



- ❑ **One of the major shipping lanes of the world:**
 - 100 million tons of crude oil / year;
 - Trafficking weapons, organs, children;
 - drug trafficking;
 - illegal emigration;
 - Smuggling, etc.



COMMISSION SOUS-RÉGIONALE DES PÊCHES
SUB-REGIONAL FISHERIES COMMISSION

SOCIO-ECONOMIC CONTEXT



- ❑ Key role of the fisheries sector
 - Food Safety,
 - Trade balances of MS,
 - Job creation ;
- ❑ Very important effort
 - + 1000 including 700 foreign industrial vessels operating under fishing agreements
 - + 42,000 pirogues (Senegal = 22000);
- ❑ Annual catch value estimated at \$ 1.5 billion;
- ❑ Annual export volume estimated at USD 350 million.



COMMISSION SOUS-RÉGIONALE DES PÊCHES
SUB-REGIONAL FISHERIES COMMISSION

ORGANIZATION OF THE SRFC

☐ Conference of Ministers

- Regular meeting every two (02) years
- Extraordinary meeting whenever necessary

☐ Coordination Committee

- Directors of Fisheries of MS
- Regular meeting every two (02) years to prepare the Conference of Ministers
- Extraordinary meeting whenever necessary

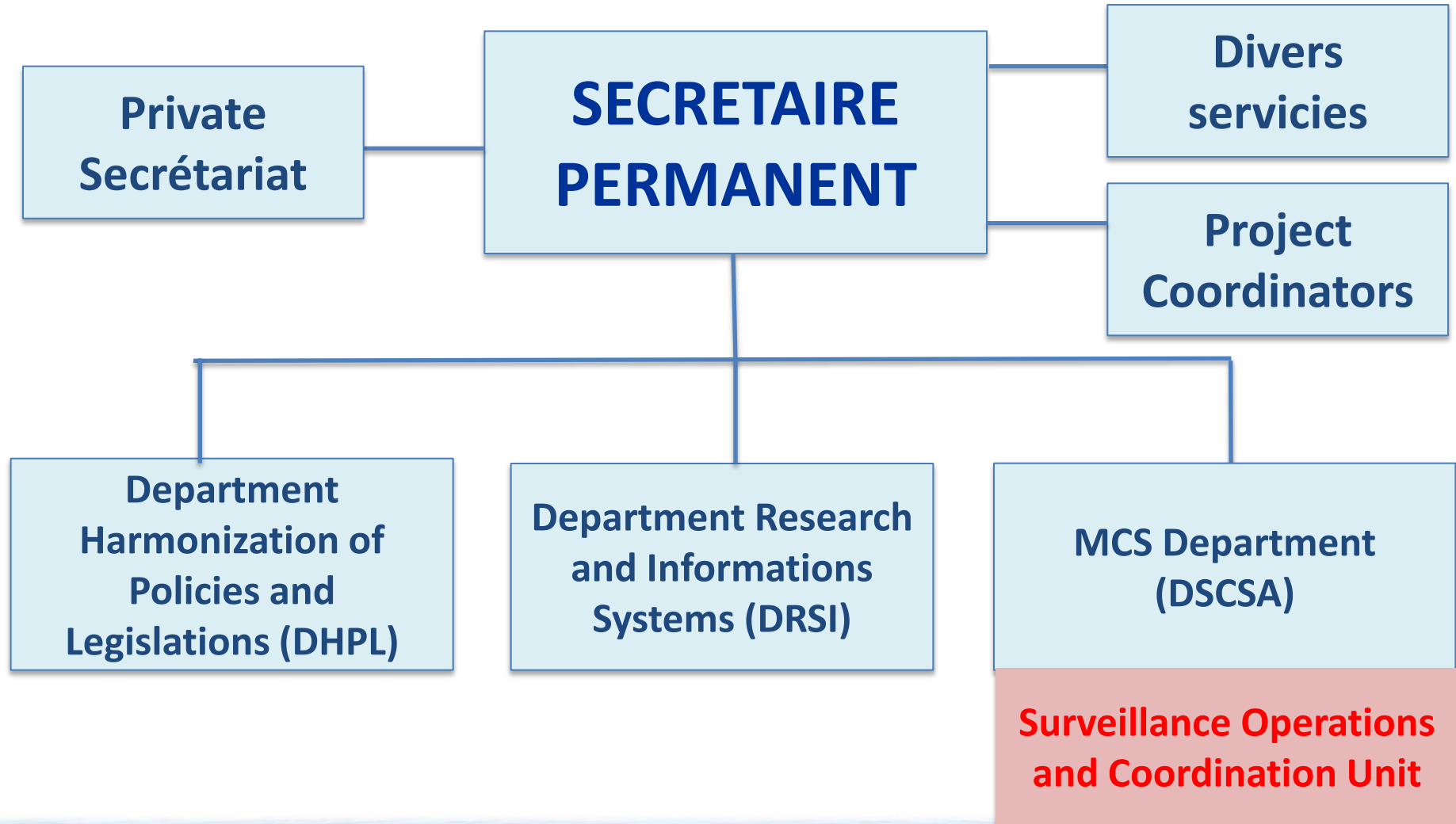
☐ Permanent Secretariat

- Implementation of decisions of the Conference of Ministers



COMMISSION SOUS-RÉGIONALE DES PÊCHES
SUB-REGIONAL FISHERIES COMMISSION

ORGANIZATION OF THE PERMANENT SECRETARIAT





COMMISSION SOUS-RÉGIONALE DES PÊCHES
SUB-REGIONAL FISHERIES COMMISSION

MISSION

- ❑ **Harmonize Member States policies in the long term, in the preservation, conservation and exploitation of their fisheries resources;**
- ❑ **Strengthen cooperation between Member States in favor of the welfare of their populations**
 - **Strategic every 5 years (2011 – 2015)**
 - **Action Plan to fight against IUU fishing (2013 – 2017)**

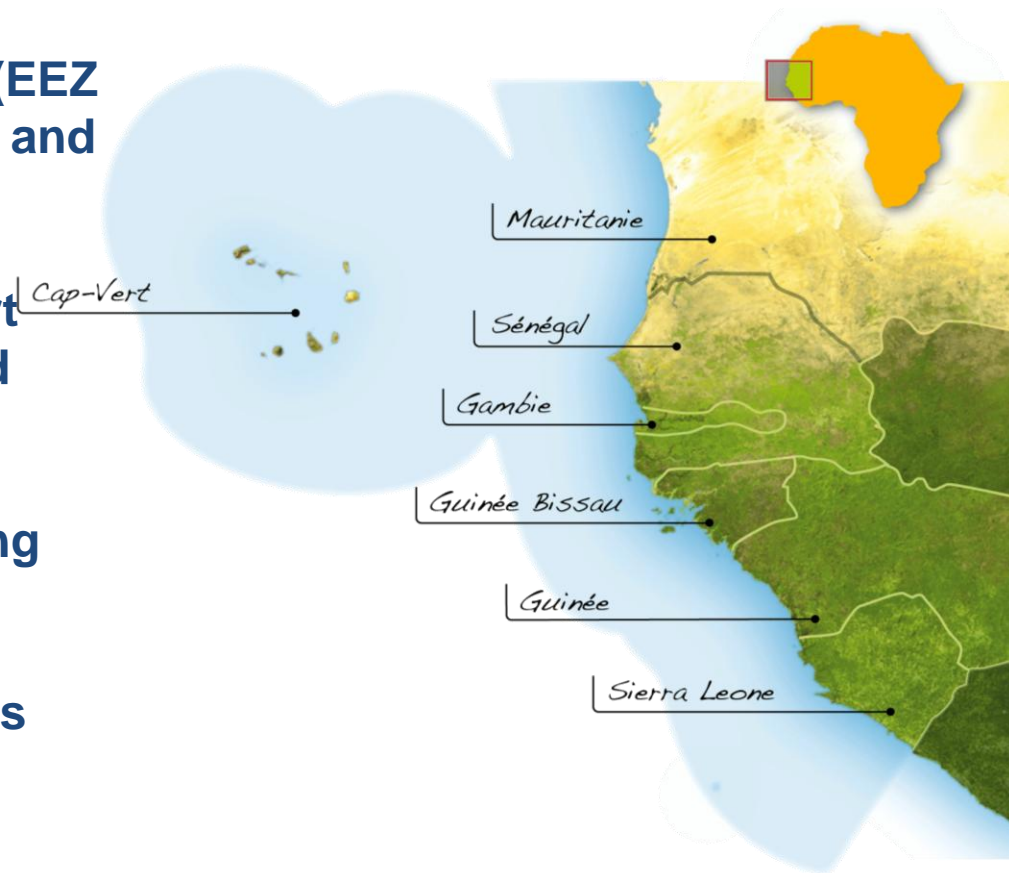




COMMISSION SOUS-RÉGIONALE DES PÊCHES
SUB-REGIONAL FISHERIES COMMISSION

HISTORY OF IUU FISHING IN THE SRFC AREA

- ❑ IUU fishing in the northern part (EEZ Cape Verde, Gambia, Mauritania and Senegal)
- ❑ Extension of in the southern part (EEZ Guinea Bissau, Guinea and Sierra Leone)
- ❑ Extension to the industrial fishing vessels flying the flag of MS
- ❑ Involvement of artisanal fisheries





COMMISSION SOUS-RÉGIONALE DES PÊCHES
SUB-REGIONAL FISHERIES COMMISSION

CONSEQUENCES : Raréfaction de la ressource

Pêcheries	Niveau exploitation
Pélagiques	
Sardinelles	overexploited
Chinchards	Fully exploited
Ethmalose	Fully exploited
Crustacés	
Crevettes roses	overexploited
Céphalopodes	
Poulpes	overexploited
Seiche	overexploited

Pêcheries	Niveau exploitation
Démersales	
Dorades	overexploited
Machoirons	overexploited
Capitaines	Fully exploited
Merous	Colapsed on 2005

Source: Etude sur la pérennisation du SCS dans la zone CSR/P- Ulrick Shack et Makane Ndiaye



COMMISSION SOUS-RÉGIONALE DES PÊCHES
SUB-REGIONAL FISHERIES COMMISSION

CONSEQUENCIES

☐ Economic losses :

- Difficulties to execute programs and national projects of development and achievement of the MDGs.
- Destruction of biodiversity
- Use of destructive technical by IUU fishing vessels.

☐ Unemployment :

- job losses and capacity to generate multiple and risky temptations such as illegal emigration to Europe noted in the sub-region since 2006 and unlawful and multiform trafficking acts
- (drugs, weapons, piracy, armed robbery, etc)



COMMISSION SOUS-RÉGIONALE DES PÊCHES
SUB-REGIONAL FISHERIES COMMISSION

STRATEGY TO FIGHT AGAINST IUU FISHING

❑ Matching:

➤ FINS:

- conservation of fish stocks, fisheries management, food security, creation and consolidation of jobs, sustainable development;

➤ MEANS : Legal, institutional and operational

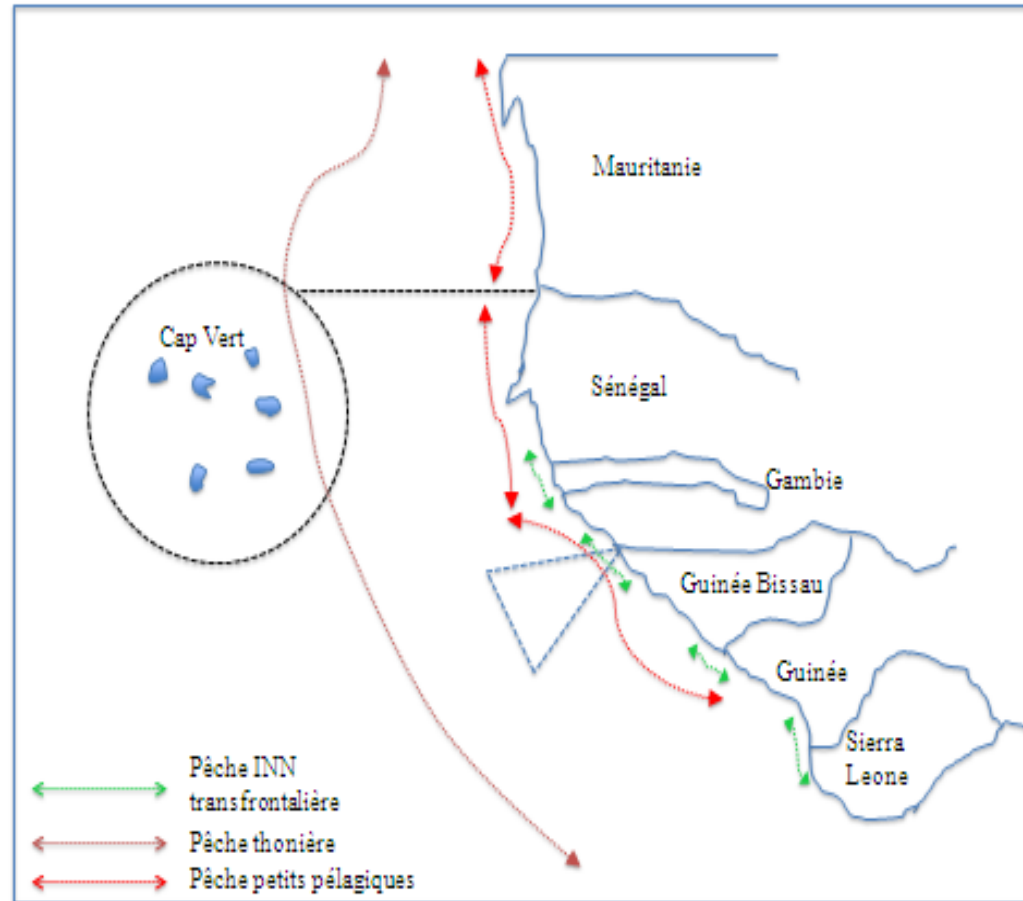
- prevent IUU fishing
- deter early IUU fishing vessels
- fight against efficiently IUU fishing acts.



COMMISSION SOUS-RÉGIONALE DES PÊCHES
SUB-REGIONAL FISHERIES COMMISSION

IUU FISHING THREATS

- ❑ Non-compliance of the MS laws by the national and foreign vessels under agreement.
- ❑ Incursions in coastal areas restricted to trawling by national and foreign fishing vessels under agreement.
- ❑ Border incursions by national and foreign vessels under agreement
- ❑ Unauthorized fishing practiced by wholly foreign fishing vessels in the sub region.
- ❑ Tuna vessels not yet monitoring one part of the year.
- ❑ Artisanal fishing canoes



Source: Etude sur la pérennisation du SCS dans la zone CSRP-
Ulrick Shack et Makane Ndiaye



COMMISSION SOUS-RÉGIONALE DES PÊCHES
SUB-REGIONAL FISHERIES COMMISSION

MEANS TO FIGHT AGAINST IUU FISHING

☐ Political commitment of MS

- Nouakchott 2001 Declaration on IUU fishing by the Conference of Ministers, reinforced by the Dakar Declaration in 2013

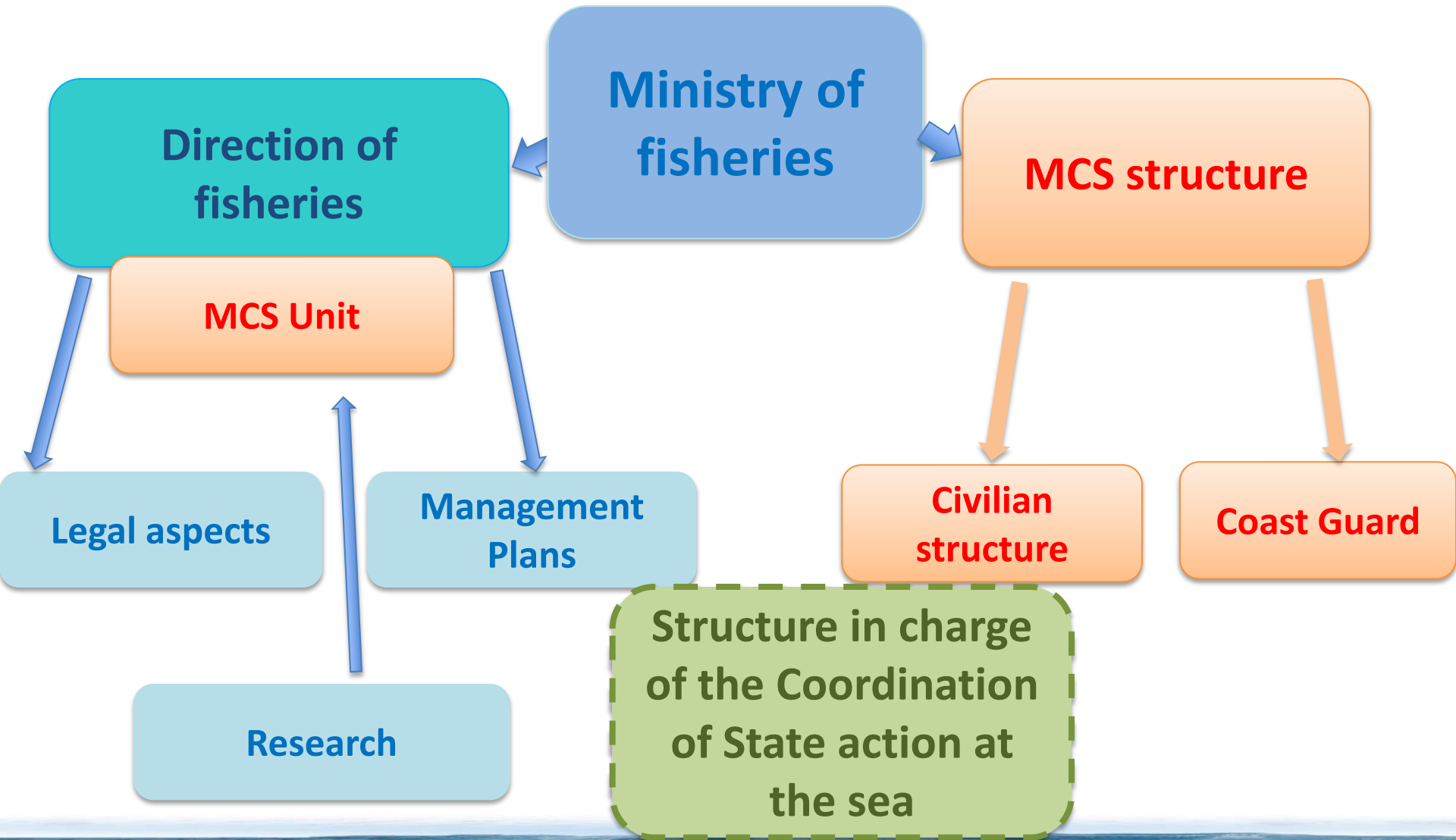
☐ legal means

- CMA Convention (drafted in 1993 and revised in 2012)
 - Referral to the ITLOS
 - Responsibilities of the flag State in case of IUU fishing by its vessels practice
 - Responsibilities of coastal states in the management of shared stocks of common interest
- 1993 Convention of Maritime Hot Pursuit + 1993 Protocol on sub regional operations (under review by MCS CONVENTION)



COMMISSION SOUS-RÉGIONALE DES PÊCHES
SUB-REGIONAL FISHERIES COMMISSION

INSTITUTIONAL MEANS





COMMISSION SOUS-RÉGIONALE DES PÊCHES
SUB-REGIONAL FISHERIES COMMISSION

SURVEILLANCE OPERATIONS AND COORDINATION UNIT (SOCU)

❑ Created in 1994

❑ Mission

- Establish a regional fisheries surveillance strategy
- Collect, analyze and share MCS information
- Plan and conduct air-sea regional surveillance operations
- Organize debriefings and write reports on such operations;
- Assist MS in the development and implementation of MCS devices
- Establish and update regularly a sub-regional register of fishing vessels
- Support national registries

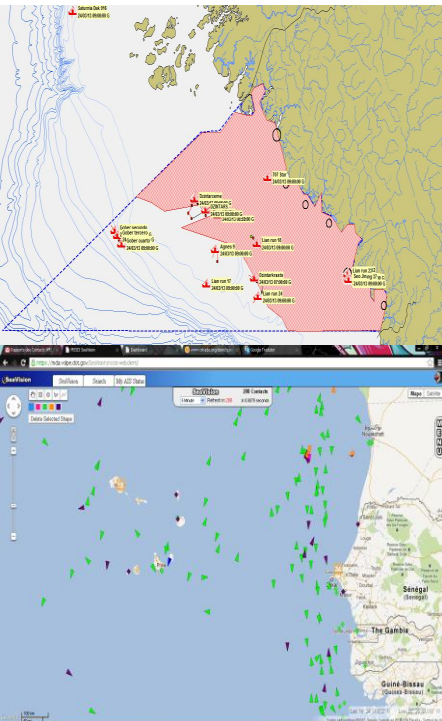


6, Marina Parade Banjul-The Gambia

Commission Technique Suivi, Contrôle et Surveillance
et aux Coordonnateurs régional et nationaux du PRAO
Département Suivi, Contrôle et Surveillance de l'Aménagement
1er -5 décembre, Banjul, Gambie

OPERATIONAL MEANS

- VMS/AIS in each MS
- SSB radio network between SOCU and MS
- Phone and Internet
- Surveillance coastal stations in most of MS
- High sea patrol boat in the north
- Small patrol boat (20 à 30 m) in the south
- MCS staff trained in each MS





COMMISSION SOUS-RÉGIONALE DES PÊCHES
SUB-REGIONAL FISHERIES COMMISSION

SUB REGIONAL OPERATIONS MECHANISM

□ The division of the maritime space in 04 segments

- The sea area off MS EEZ, including the high seas
- The offshore segment
- The coastal segment
- The ground segment





COMMISSION SOUS-RÉGIONALE DES PÊCHES
SUB-REGIONAL FISHERIES COMMISSION

GROUND SEGMENT

- ❑ **Delimitation**: Ports, harbors and anchorages, marketing and consumption of fishery products channels
- ❑ **Features** : Fight against IUU fishing for "least cost"
- ❑ **Implementation by Member States**
 - port inspections (effective application of State Port Measures Port);
 - control of marketing and consumption of fishery products channels
 - Information exchange



COMMISSION SOUS-RÉGIONALE DES PÊCHES
SUB-REGIONAL FISHERIES COMMISSION

COSTAL SEGMENT

- ☐ **Delimitation**: Coastal zones to the limit of the territorial sea
- ☐ **Features** : Sensitive and prohibited Areas for trawling
- ☐ **Implementation by Member States**
 - Implement coastal surveillance stations
 - information exchange
 - the duo "VMS-Observer" to prevent incursions into restricted areas;
 - participatory monitoring
- ☐ **Support of the SRFC = Support for the construction of coastal surveillance stations**



COMMISSION SOUS-RÉGIONALE DES PÊCHES
SUB-REGIONAL FISHERIES COMMISSION

OFFSHORE SEGMENT

- ❑ Delimitation: The EEZ to the limit of the territorial sea
- ❑ Features : Availability of adequate resources in the countries of the North zone, which is the opposite in the countries of the South Zone
- ❑ **Implementation by MS supported by the SRFC**
 - the couple "VMS-Observer"
 - information exchange,
 - planning and conducting combined surveillance operations with the pooling of means of MS (**Charter the means of MS North in the North zone to support the MS of the South zone**)
 - aerial surveillance
 - planning and conducting regular bilateral transactions between EM border



COMMISSION SOUS-RÉGIONALE DES PÊCHES
SUB-REGIONAL FISHERIES COMMISSION

TYPE OF OPERATIONS

- Deployed means for each country

Cap-Verde

Type C

Est ZEE Cabo Verde,
Sud et Ouest ZEE
Mauritanie,
Nord et Ouest ZEE Sénégal

- Senegal as leader

Type B

Sud ZEE Sénégal
ZEE Gambie
ZEE Guinée Bissau

- Charter means of Cabo Verde or Mauritania or Senegal

Type A

ZEE Guinée Bissau
ZEE Guinée
ZEE Sierra Leone





COMMISSION SOUS-RÉGIONALE DES PÊCHES
SUB-REGIONAL FISHERIES COMMISSION

SEA AREA OFF MS EEZ, INCLUDING THE HIGH SEAS

- ☐ Exercise by MS their rules as flag state
- ☐ Contribution in the universal combat for the eradication of unlawful acts at sea in general and in particular IUU fishing
- ☐ **Implementation by MS supported by the SRFC**
 - VMS
 - Information exchange
 - Strengthening cooperation with third countries and international organizations dealing with the issue





COMMISSION SOUS-RÉGIONALE DES PÊCHES
SUB-REGIONAL FISHERIES COMMISSION

SOCU IN DAILY WORK

COLLECT



ANALYZE



SHARE

- ☐ Means all MS (VMS / AIS, operational means, coastal surveillance stations, databases, mission reports, all sources of information)
- ☐ Sub regional radio network
- ☐ National registries
- ☐ International databases
- ☐ INTERPOL
- ☐ RFOs
- ☐ Fishing sector professionals
- ☐ NGOs,
- ☐ Various



ARRAISONNEMENT

- Navire « MONTE ALBA » pavillon Panama
- Navire « MYRA Q » pavillon Italie
- « ASIAN WARRIOR » pavillon Saint Vincente and Grenadines

RECHERCHE NAVIRES

- Navire « NOVA ZEELANDIA » pavillon Curacao
- Navire « YELLA » pavillon Espagne ou Mexique
- Navire « GOTLAND » pavillon Saint Vincent et Grenadines

SOCU IN OPERATIONAL SITUATION

- **SOCU as Coordination Operations Center**

Visite du Ministre de la Guinée



Visite de l'Ambassadeur du Sénégal



Renfort par du personnel de MCS Unit et Gambia Navy



Cinématique Patrouilleurs nationaux et sous régional



SOCU IN OPERATIONAL SITUATION

Intelligence



- Establishment of a Sub Regional Operations Coordination Center (SROCC) in SOCU or in any MS engaged in the operation
 - SROCC managed by the Operation Officers of the MS involved in the operation,
 - SROCC organized in 4 sections of expertise

Planification



Opérations



Logistique





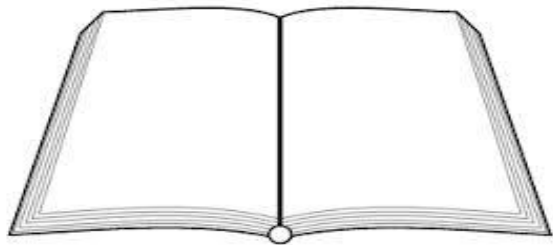
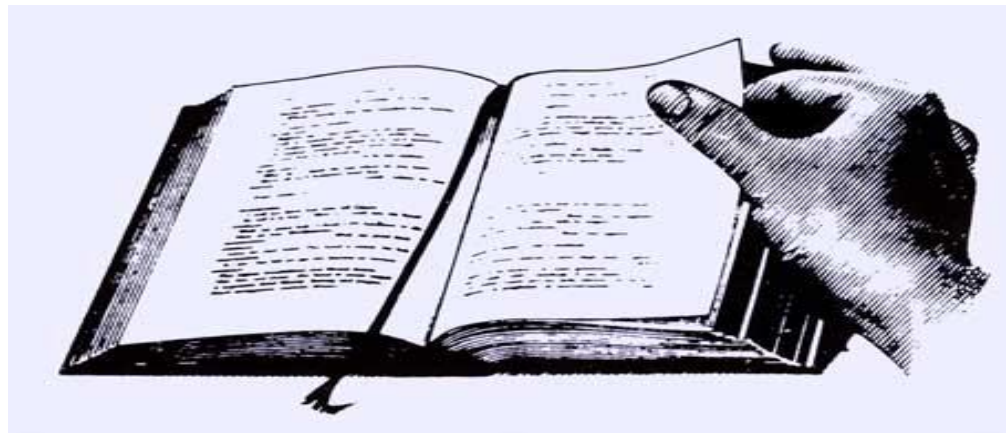
COMMISSION SOUS-RÉGIONALE DES PÊCHES
SUB-REGIONAL FISHERIES COMMISSION

STATISTICS OF THE SUB REGIONAL OPERATIONS

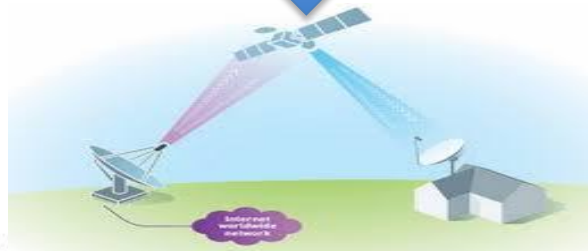
Opérations de surveillance	Année	Navires détectés	Navires identifiés	Navires contrôlés	Navires arraisonnés
OCTOPUS	2011	61	61	28	6
SARDINELLA	2012	21	21	21	0
BA PATHE	2013	36	24	19	4
SCORPION	2013	40	40	40	6
CHACAL	2013	36	36	27	2
PANTHERE	2013	20	20	17	0
TEMPETE EN MER	2013	215	113	83	2
OUSMAN DRAMMEH	2014	47	44	42	2
GoWAMER	2014	56	22	22	0
TOTAL		532	381	299	22

OUTGOING ACTIVITIES

1. Harmonize the MCS legal framework = Finalize MCS Convention



☐ Protocol of the sub regional
registre of industrial fishing
wessels



☐ Protocol of information
exchange



Protocol of the sub regional observers
program

OUTGOING ACTIVITIES

2. Sustainable funding of the MCS activities



3. Strengthen the training activities



4. Strengthen the sub regional combined surveillance operations

5. Strengthen regional and international cooperation



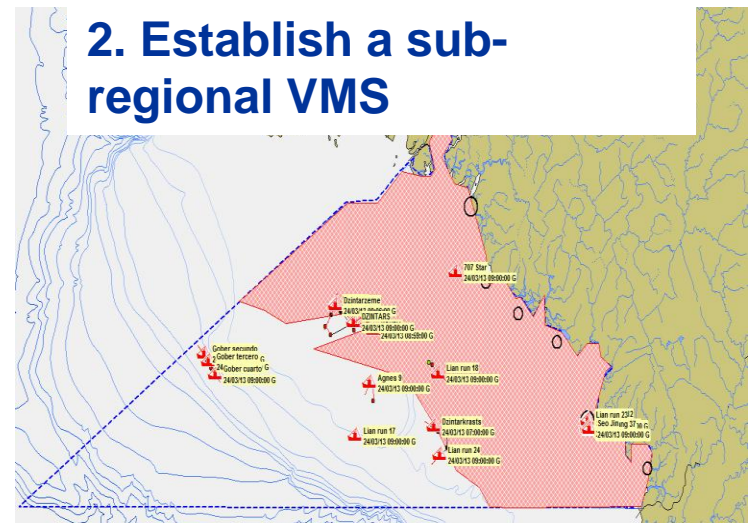


COMMISSION SOUS-RÉGIONALE DES PÊCHES
SUB-REGIONAL FISHERIES COMMISSION

PROSPECTS

1. Changing the mandate of the SRFC to be an integration organization

2. Establish a sub-regional VMS



3. Improve the regional network communications



4. Revision of the CMA Convention to take into account ITLOS recommendations



**COMMISSION SOUS-RÉGIONALE DES PÊCHES
SUB-REGIONAL FISHERIES COMMISSION**

Merci de votre
attention

Secrétariat Permanent de la CSR

Villa 4430, Karack, Rue KA-38 (Rue mère)
Dakar – Sénégal

Adresse postale

BP 25485, Dakar – Fann, Sénégal

Tél.: +221 33 864 04 75

Fax.: +221 33 864 04 77

spcsrp@spcsrp.org

www.spcsrp.org