



Hurricane Sandy



FEMA

Alex Amparo
Deputy Assistant Administrator
Recovery Directorate

Hurricane Sandy At a Glance

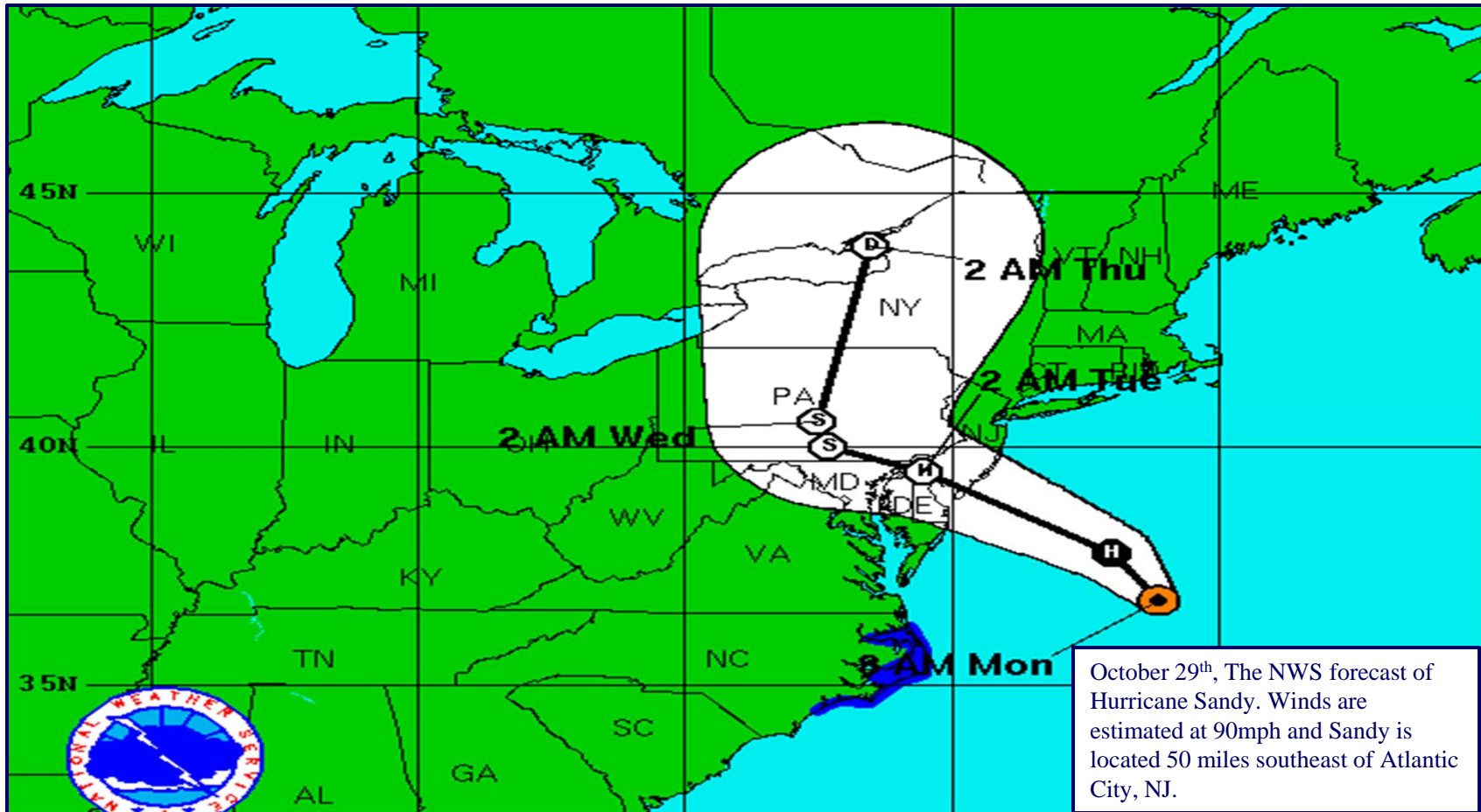


- 2nd largest Atlantic storm on record
- Impacted the most densely populated area of the United States
- Destroyed thousands of homes, caused tens of billions of dollars in damages, killed 162 people
- Over 23,000 people in temporary shelters
- 8.5 million customers without power



FEMA

The Storm Track – (Monday, October 29th)



FEMA

Federal Response

Federal Response - FEMA Headquarters

- Federal Government-wide response and recovery, coordinated by the Federal Emergency Management Agency
 - Response Coordination Centers
 - Incident Management Assistance Teams
 - Emergency Communications
 - Urban Search and Rescue
 - Liaison Officers
 - Power Restoration



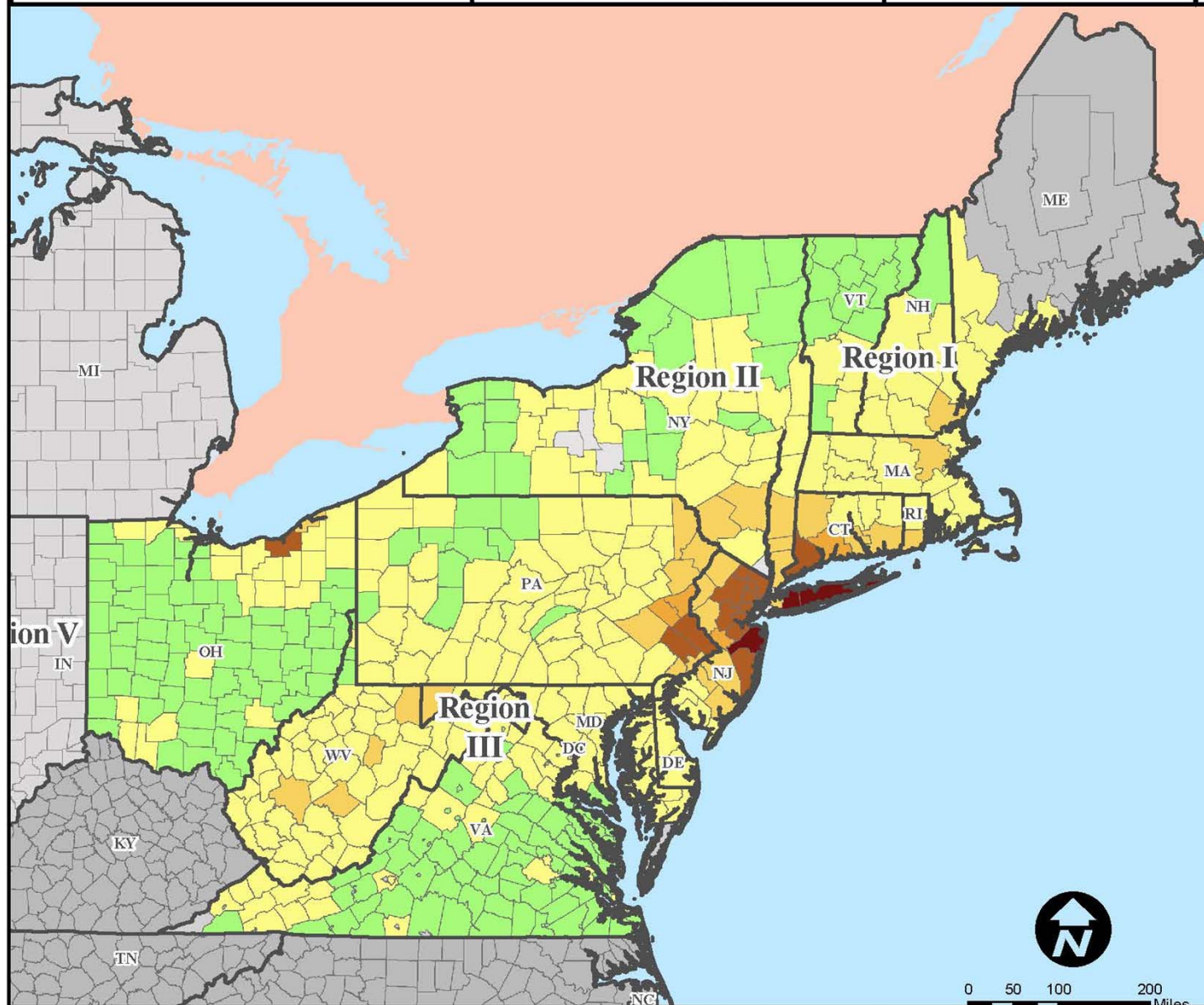
FEMA

Current Power Outages by County

1. Incident Name
Hurricane Sandy

2. Date
31 OCT 2012

3. Time
as of 2300 EDT



Legend

**Current Power Outages
Outage**

- 1 - 10,000
- 10,000 - 50,000
- 50,000 - 100,000
- 100,000 - 250,000
- 250,000 - 402,446

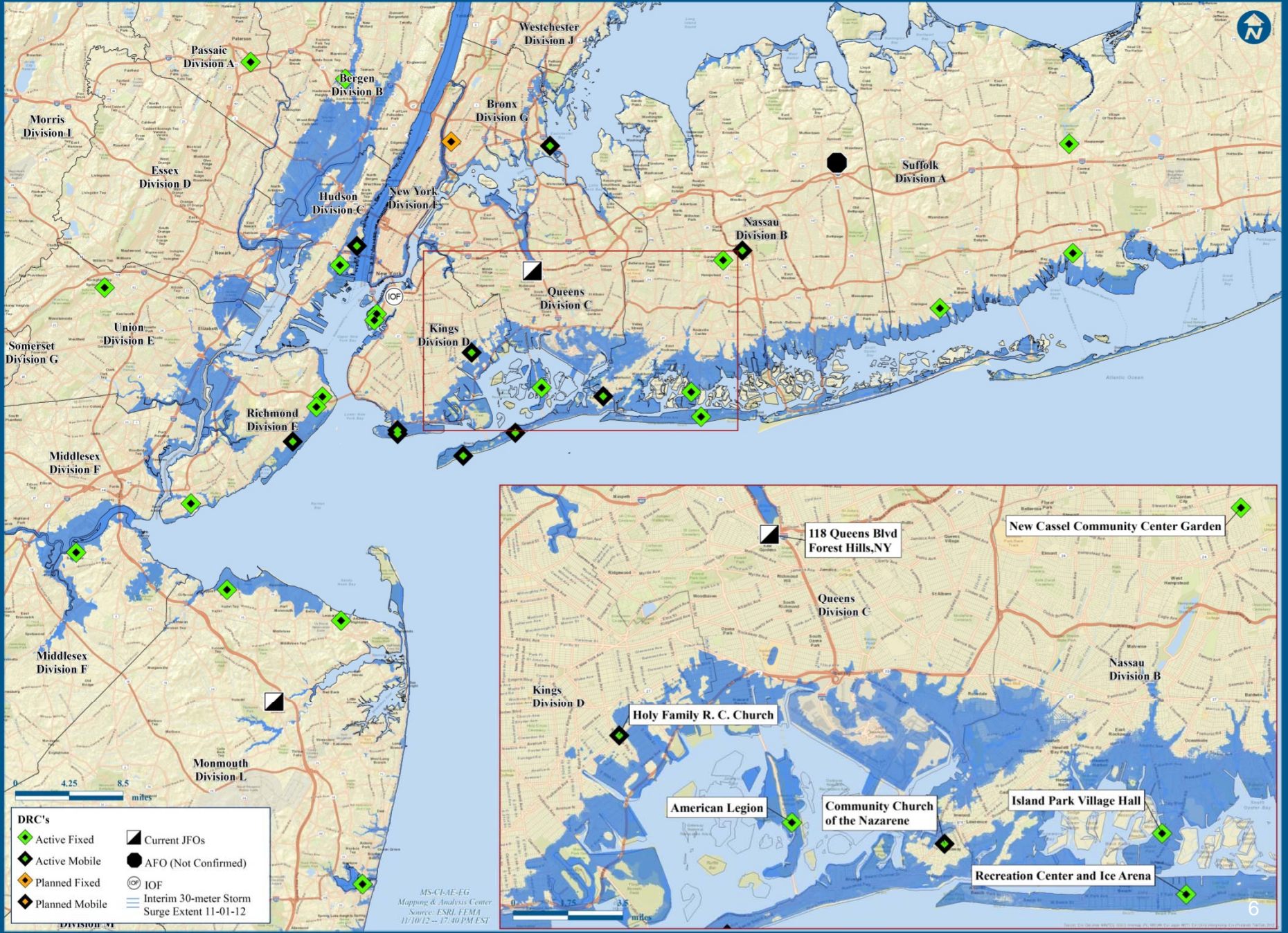
No Reported Outages

- No Reported Outages
- No Data

4. Source(s):
HSIP Gold, FEMA, ESF-12

5. Prepared by
Mapping & Analysis Center

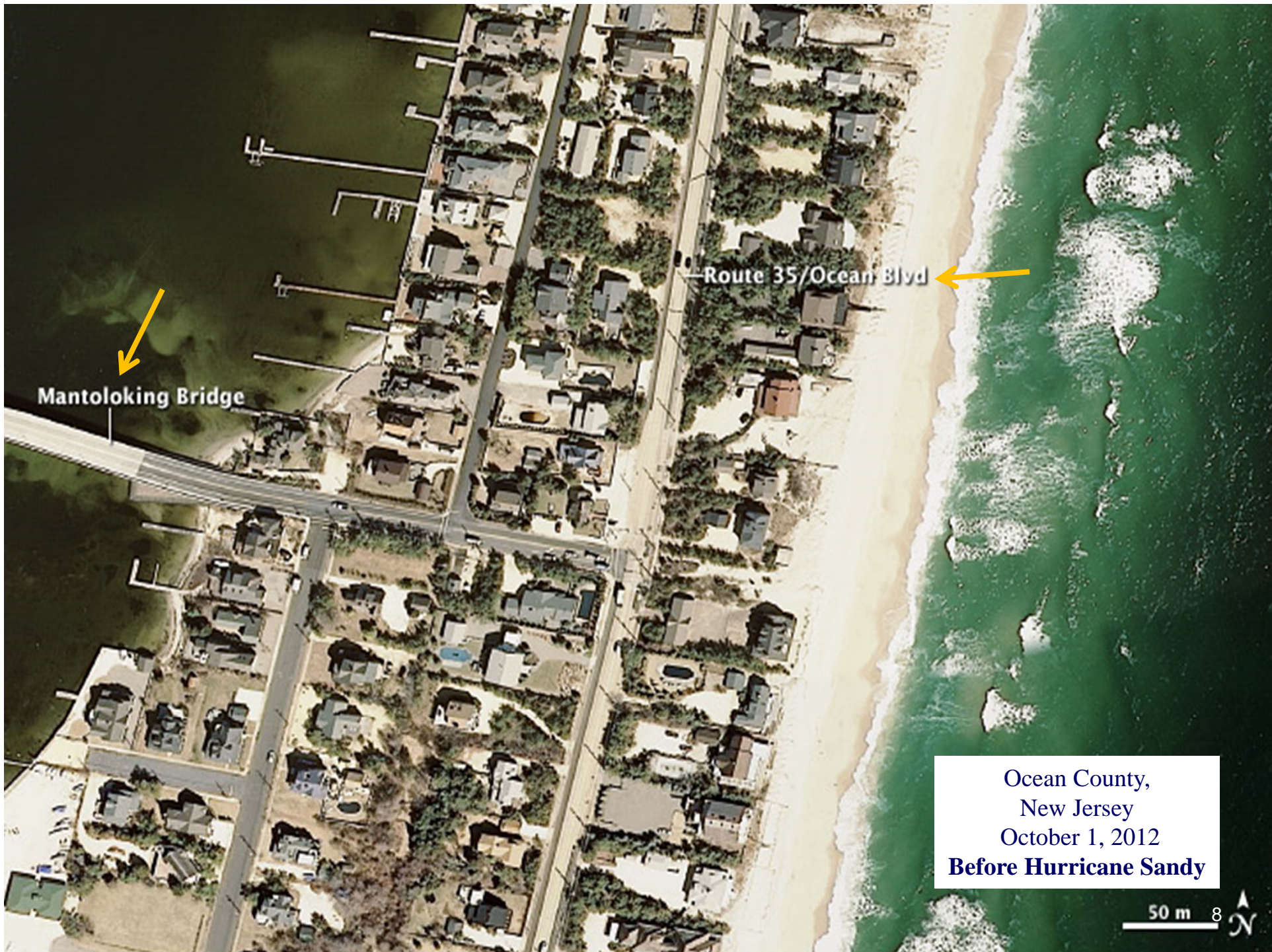
Hurricane Sandy Overview



- DRC's**
- ◆ Active Fixed
 - ◆ Active Mobile
 - ◆ Planned Fixed
 - ◆ Planned Mobile
 - ▣ Current JFOs
 - AFO (Not Confirmed)
 - ⊙ IOF
 - ≡ Interim 30-meter Storm Surge Extent 11-01-12

MS-CI/AE-EG
Mapping & Analysis Center
Source: ESRI, FEMA
11/10/12 -- 17:40 PM EST



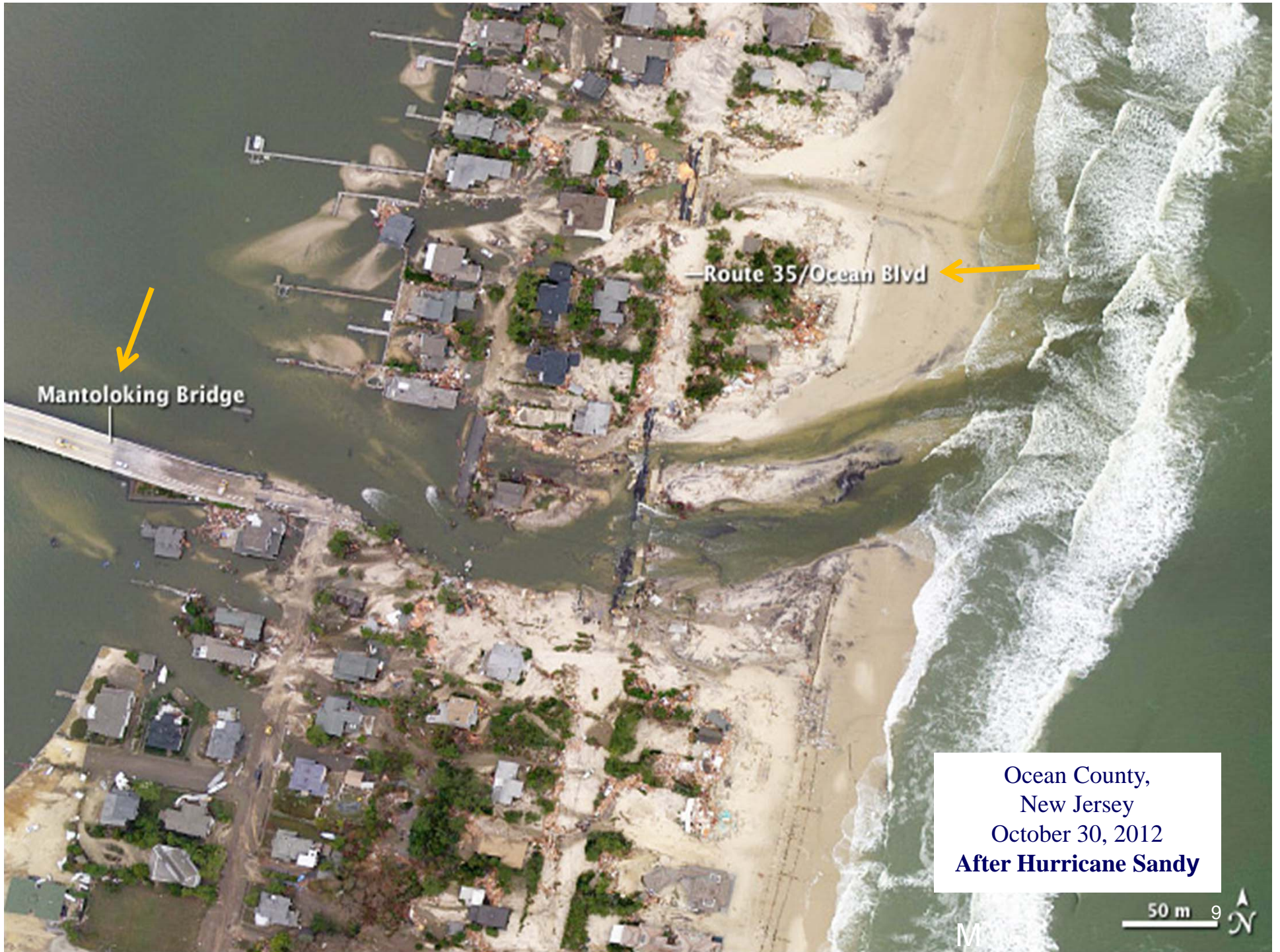


Mantoloking Bridge

Route 35/Ocean Blvd

Ocean County,
New Jersey
October 1, 2012
Before Hurricane Sandy

50 m 8 N



Mantoloking Bridge

Route 35/Ocean Blvd

Ocean County,
New Jersey
October 30, 2012
After Hurricane Sandy

50 m 9 N

Recovery Efforts

Housing Mission

- Sheltering and Transitional Sheltering Assistance
- Expedited Rental Assistance
- Direct Housing Mission

National Disaster Recovery Framework

- Federal Disaster Recovery Coordinators
- Recovery Support Functions
- Hurricane Sandy Rebuilding Task Force



FEMA

Recovery Focus

Debris removal

Power restoration

Schools re-opened

Major retail outlet operations

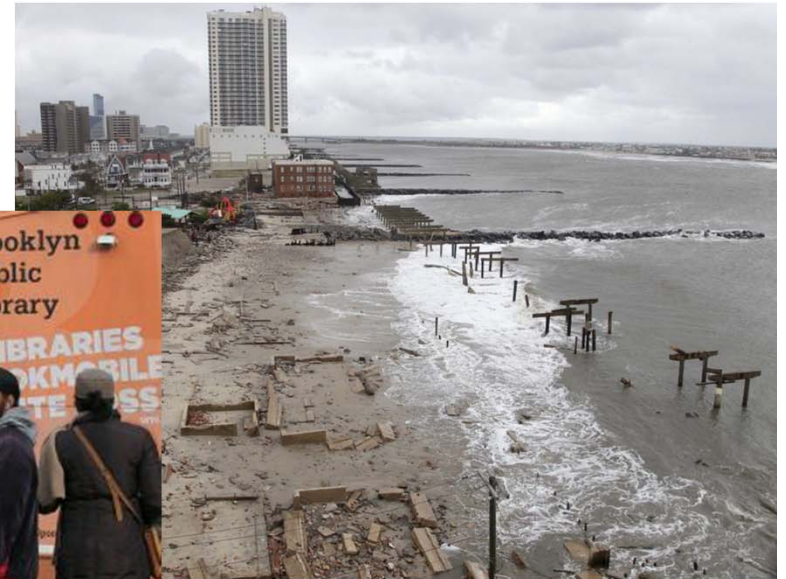


FEMA

Recovery Coordination

Voluntary Agency Engagement

Private Sector Engagement



FEMA

Lessons Learned

Large-scale disasters are different

- Enormous requirements
- Complexity
- Political Engagement

“Whole Community” must be engaged

- Private Sector
- Government
- Volunteer Agencies
- Survivors themselves



FEMA

Lessons Learned

Areas for Improvement

- Ensuring Unity of Effort across the Federal Response
- Orienting Response and Recovery Efforts toward Survivors
- Ensuring Unity of Effort across the Whole Community
- Developing an Agile, Professional Emergency Management Workforce



FEMA

Questions?