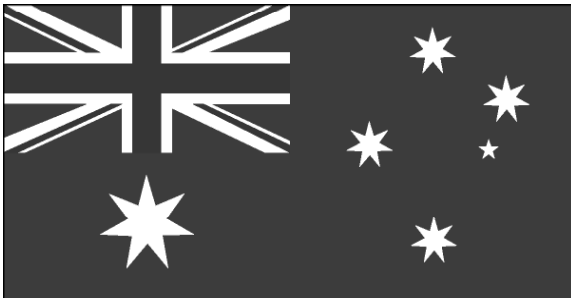
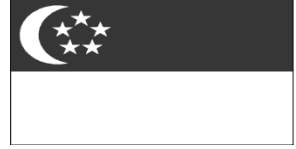




ARF Disaster Relief Mapping Service





HISTORY / AGENDA

- ASEAN recognised need for geospatial data
 - support humanitarian assistance/disaster relief (HADR) efforts
- Australia proposed on-line geospatial warehouse
 - Concept co-sponsored by Singapore
 - Proposal presented to the ARF Inter-Sessional Support Group (ISG) Meeting on 21 April 2009.
 - Proposal recommended for Ministerial endorsement by ARF Senior Officials on 20 May 2009.
 - Proposal endorsed by ARF Ministers on 23 July 2009.
 - **Proposal was presented to the 2009 ISM – HR 17 Sept 2009**

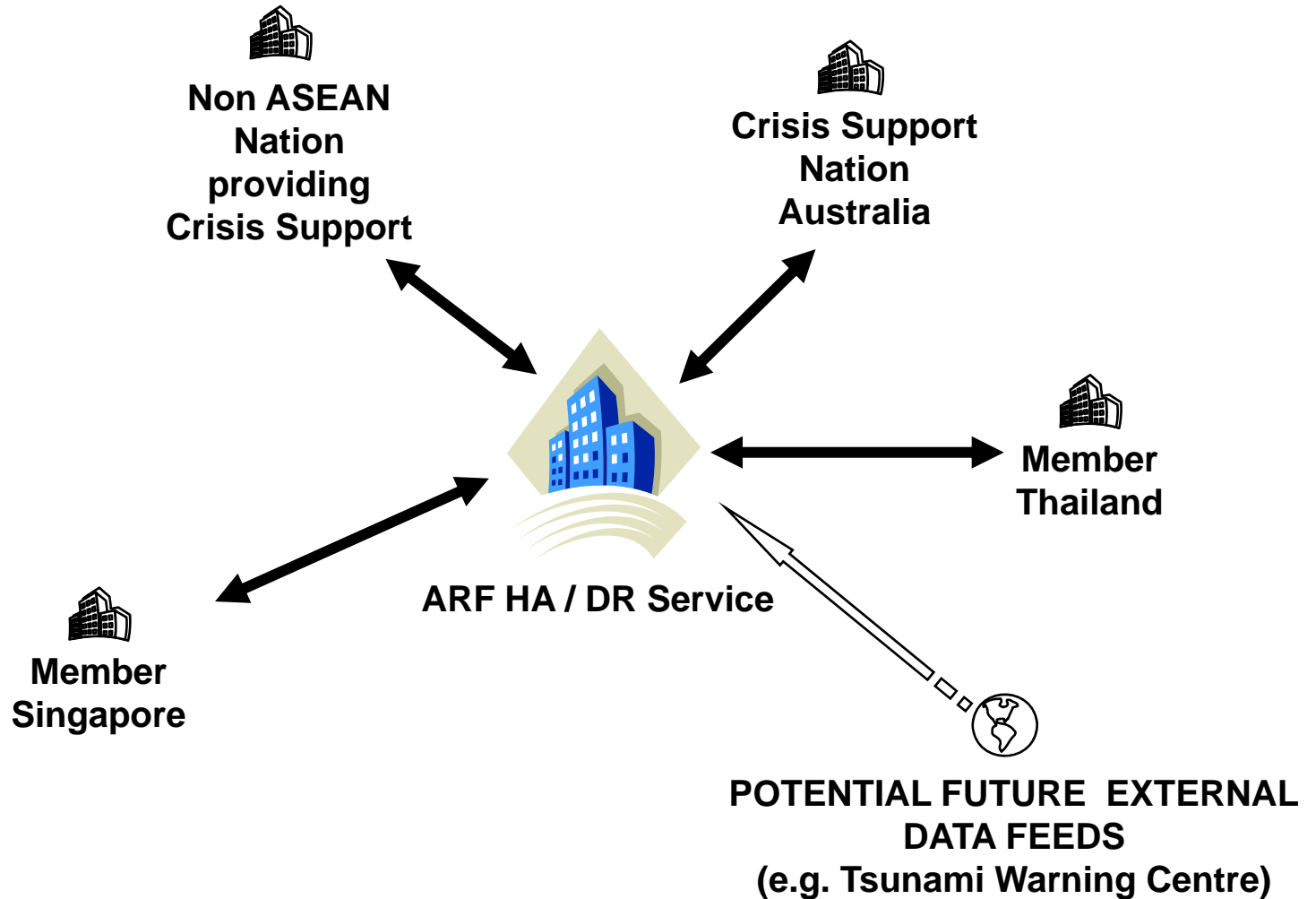


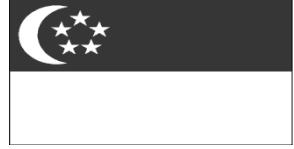
PROPOSAL

- A collaborative geospatial service
- Utilised by support nations.
- Voluntary
- Provides common support base

BENEFITS

- One stop shop
- Information sharing
- Quicker response time
- Expandable





Level 1 Support data: Preparing for the Crisis

Pre-populated data

- Features
- Elevation



Level 2 Support data: Reacting to the Crisis

Maintenance and densification of data

- Specialised data for provision of aid support
 - Aeronautical information
 - Vertical obstructions, navigation aids, etc
 - Air facilities support capabilities
 - Port facilities

Level 3 Support data: Future Predictive Models*

- Inundation/flood models
- Network analysis
- Displaced populations

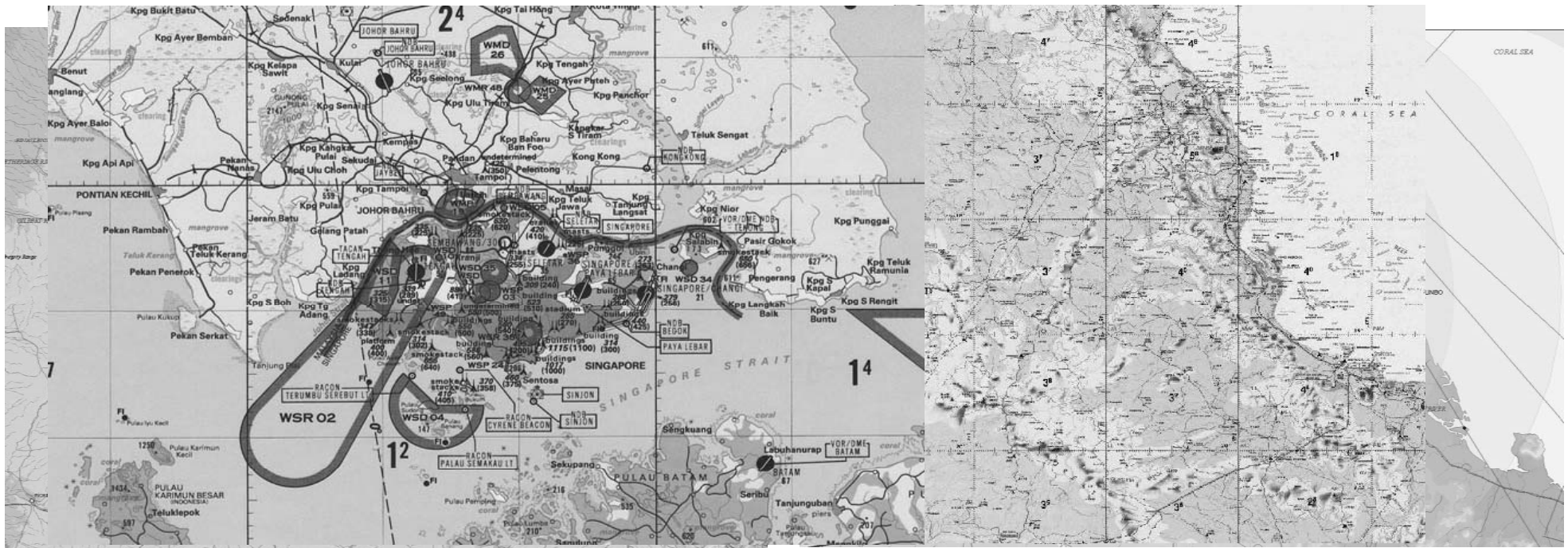




1st Level Support data: Preparing for the Crisis

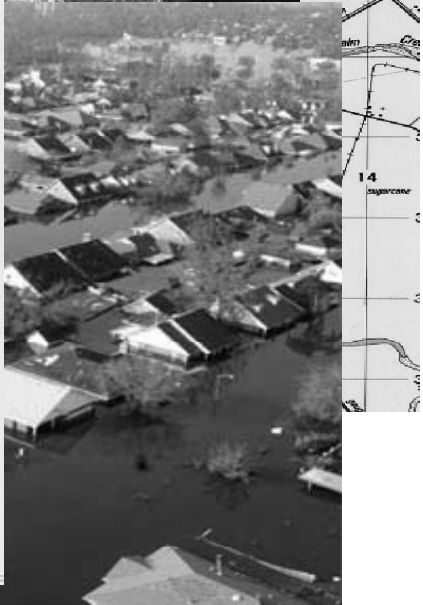
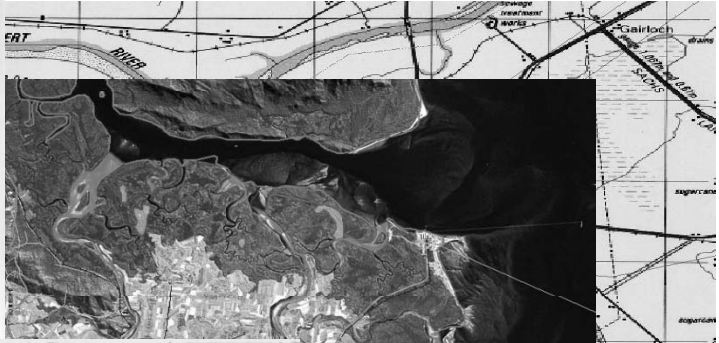
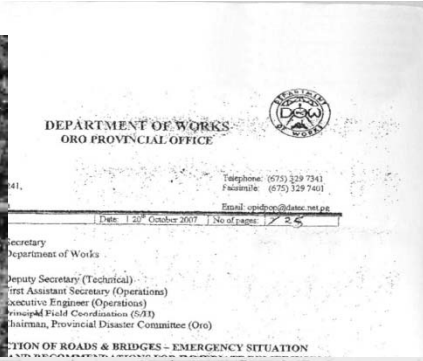
Pre-populated data

- Features, Elevation,
- Aeronautical Information

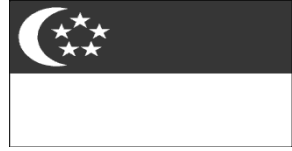




Level 2 Support data: Reacting to the Crisis



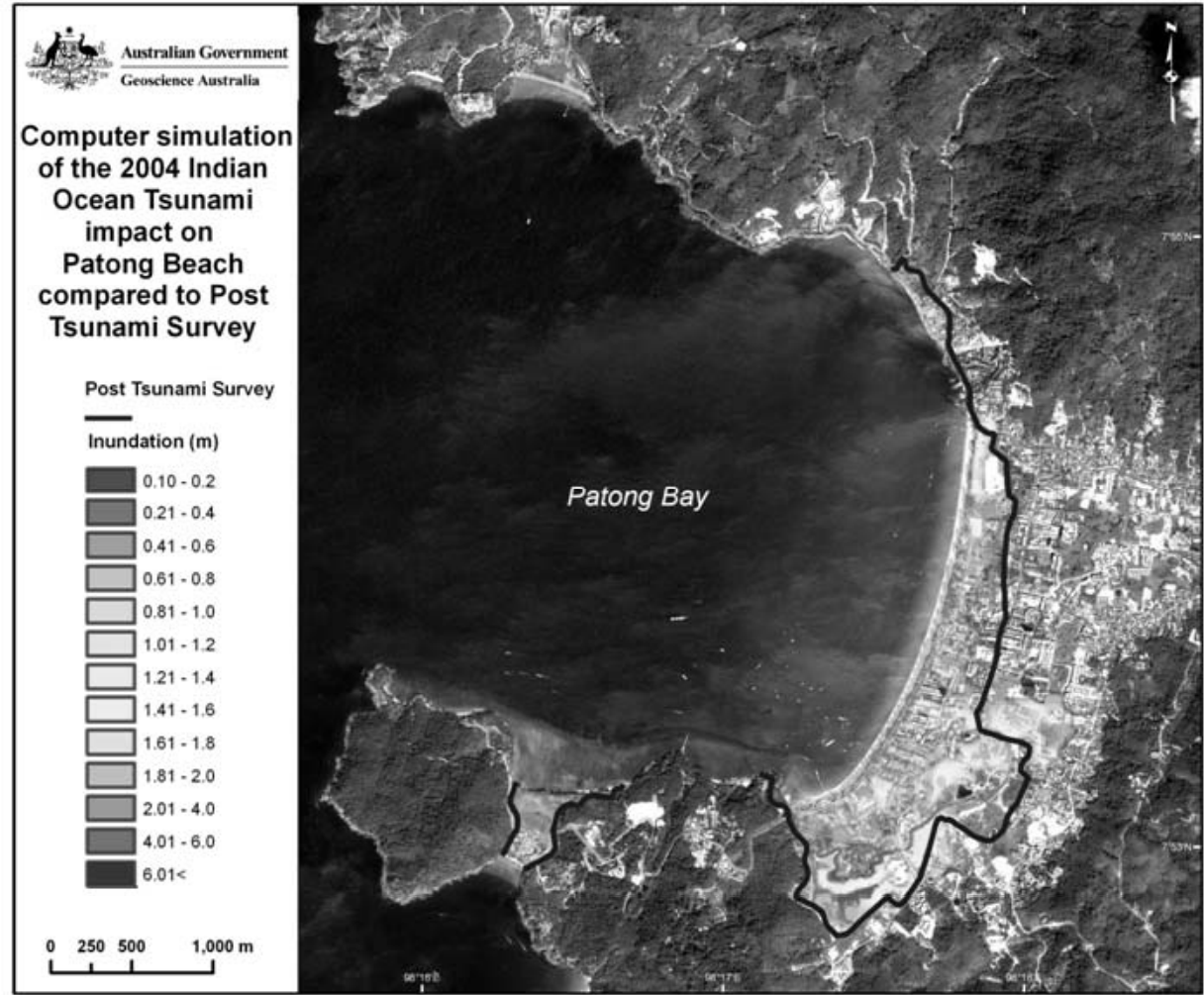
* vector files (e.g., shapefiles, MapInfo, CAD), raster files (e.g., Imagery: JPEG, GEOPDF, Geotiff, NITF), matrix data (Elevation data: DEM/Grid, TIN)

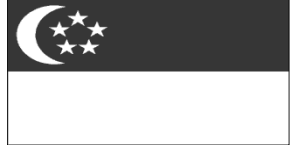


3rd Level Support data: Future possibilities

Predictive modeling

- Inundation model

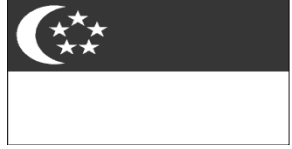




TIMELINE

- **Approved and Funded Dec 09**
- **Hardware acquisition 4 – 7 May 10**
- **Site Development & creation 13 May – 16 Jun 10**
- **Install at host site and connect 22 – 25 Jun 10**
- **Sign off 28 - 30 Jun 10**
- **“Go Live” Jul 10**

- **Primary requirement to be in place for ARF DirEX (Mar 2011)**
 - **Indonesia , Manado (Sulawesi)**

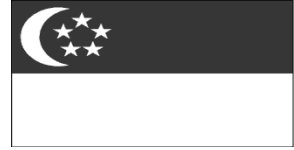


Data

- **Singapore, Malaysia, Indonesia in progress**
- **Australian Aeronautical data**
- **De Lorme Digital Map data**
- **ESRI data**

Engineering

- **ESRI – Geo Portal Toolkit and Server development**
- **Data Centre - Harbour MSP (Sydney)**
- **25 Aug 10 – ARF-DRMS link to the ARFNET established**



ASEAN REGIONAL FORUM

Promoting peace and security through dialogue and cooperation in the Asia Pacific.



→ [Home](#)

→ [Login](#)

→ [Home Member Services](#)

→ [About Us](#)

→ [Public Library](#)

→ [News](#)

→ [Calendar](#)

→ [Contacts](#)

→ [Links](#)

→ [Search](#)

→ [Photo Gallery](#)

→ [Links](#)

The ASEAN Regional Forum Disaster Relief Mapping Service (ARF-DRMS)

International and Regional Organizations

Ministries of Foreign Affairs

Defense Universities/Colleges

CSCAP



ASEAN Regional Forum - Disaster Relief Mapping Service

HOME

Home

The development of the ASEAN Regional Forum Disaster Relief Web Mapping Service (ARF-DRMS) has been sponsored by the Governments of Australia and Singapore as part of their support to the Humanitarian Assistance / Disaster Relief effort in the region.

History:

The ASEAN Regional Forum recognised the need for geospatial data to support humanitarian assistance and disaster relief (HA/DR) efforts. The ARF noted that geospatial data in support of disaster relief operations was available through a maze of mostly open sources complicating rapid response efforts.

Australia proposed the concept to create an on-line geospatial warehouse which was co-sponsored by Singapore to consolidate data into a single user friendly map of the region. The proposal was presented to the ARF Inter-Sessional Support Group Meeting in April 2009. It was recommended for Ministerial endorsement by ARF Senior Officials in May 2009 and endorsed by the ARF Ministers on 23 July 2009.

Purpose:

The aim of the ARF DRMS service is to promote a collaborative environment where ASEAN Regional Forum participants can contribute data on a voluntary basis. In conjunction with crisis support agencies, it will provide a facility for disaster relief planning, training purposes and most importantly for expedited responses to regional disasters. It will allow for quick and consistent data delivery and will also provide an effective mechanism to support better policies for information sharing.

The ARF-DRMS will provide a common support base and reliable data to optimise HA/DR operations.

Official Co-Sponsors of DRMS:



Australian Government

Corporate Sponsors:





ASEAN Regional Forum - Disaster Relief Mapping Service

[HOME](#)

[SEARCH](#)

[VALIDATION](#)

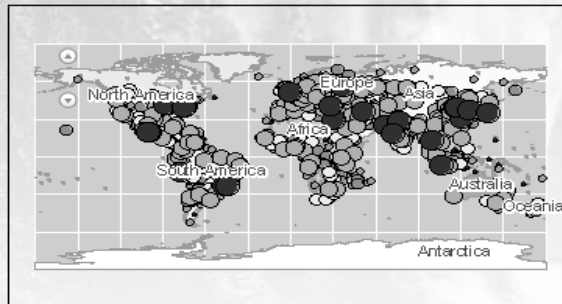
[DOWNLOAD](#)

[LAUNCH MAP VIEWER](#)

Search

[Clear](#)

Advanced Search



My Saved Searches

Results 1-7 of 7 record(s)

Expand results [Zoom To Results](#) [Zoom To Searched Area](#)

[H08576, NOAA Hydrographic Survey in the vicinity of Kahului Bay, Hawaii \(1961\)](#)

[H08580, NOAA Hydrographic Survey in the vicinity of Vicinity of Hekili Point, Hawaii \(1961\)](#)

[H08682, NOAA Hydrographic Survey in the vicinity of Area of Pauwela Pt. Light, Hawaii \(1962\)](#)

The National Oceanic and Atmospheric Administration (NOAA) has the statutory mandate to collect hydrographic data in support of nautical chart compilation for safe navigation and to provide background data for engineers, scientific, and other commercial a...

[Open](#) [Preview](#) [Add To Map](#) [Website](#) [Details](#) [Metadata](#) [Zoom To](#)

[H08683, NOAA Hydrographic Survey in the vicinity of Lipoa Pt. to Mokolea Pt., Hawaii \(1962\)](#)

[H08577, NOAA Hydrographic Survey in the vicinity of Kekaa Point to Launiupoko Point, Hawaii \(1961\)](#)

[H08578, NOAA Hydrographic Survey in the vicinity of Kekaa Point to Hawea Point, Hawaii \(1961\)](#)

[H08579, NOAA Hydrographic Survey in the vicinity of Mokolea Point to Waihee Point, Hawaii \(1961\)](#)

See results through REST

API: [GEORSS](#) [ATOM](#) [HTML](#) [FRAGMENT](#) [KML](#)



MAP ▾

VIEW ▾

SELECTION ▾

TOOLS ▾

PREFERENCES ▾

Welcome, anonymous (Logout)

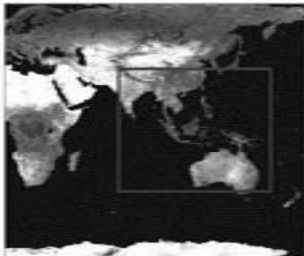
Map Viewer

TABLE OF CONTENTS

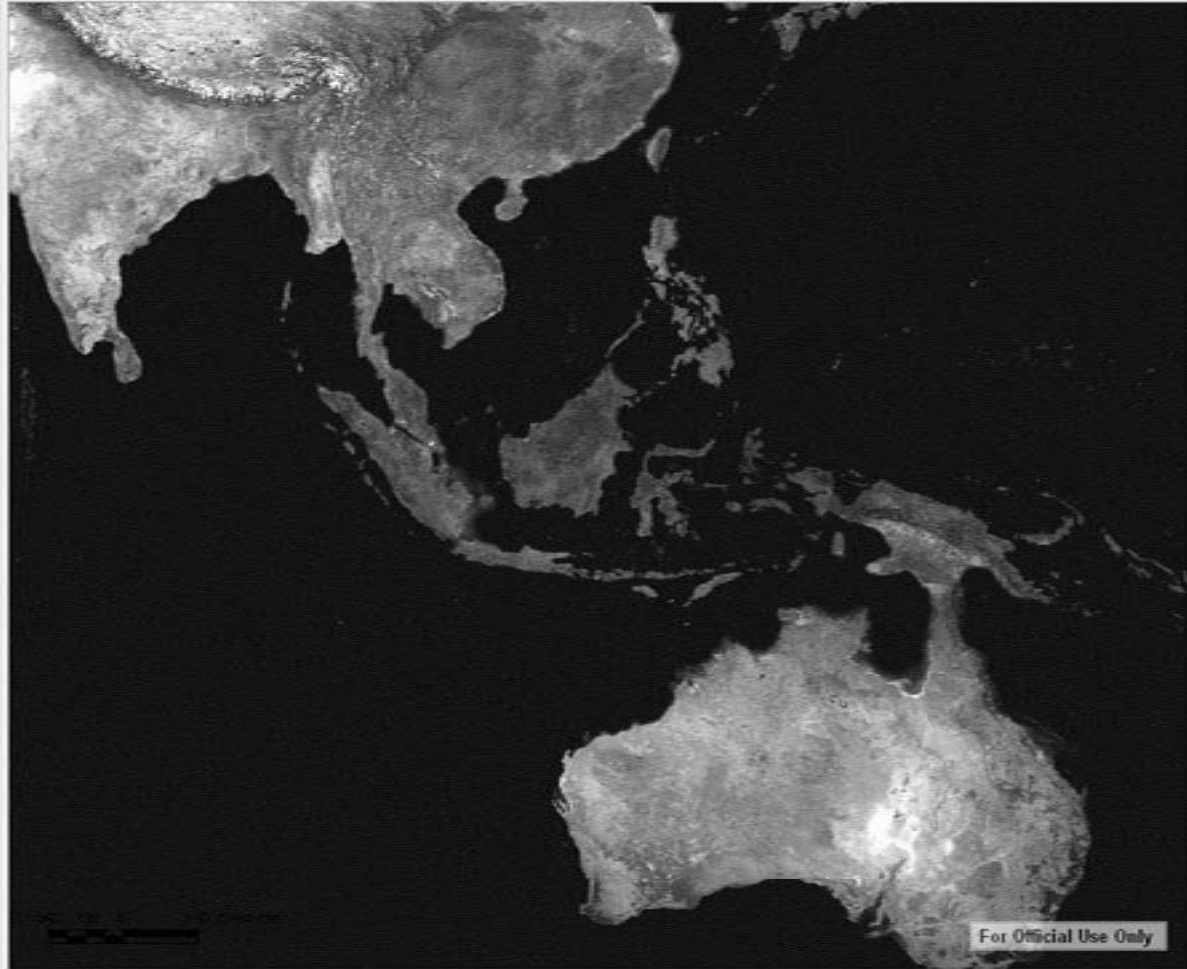
- Freehand Graphics
- Singapore_Map_50km_508svy_06
- 50km_508svy_06.tif
- Base_Data/Foundation_Map
- Welcome
- World Map
- earth_fm.jp2

SEARCH FOR GEO DATA

OVERVIEW MAP



Coordinate System: GCS WGS 1984 - Scale: 1:42,428,281



For Official Use Only

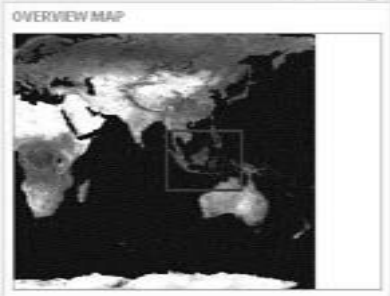


Map Viewer

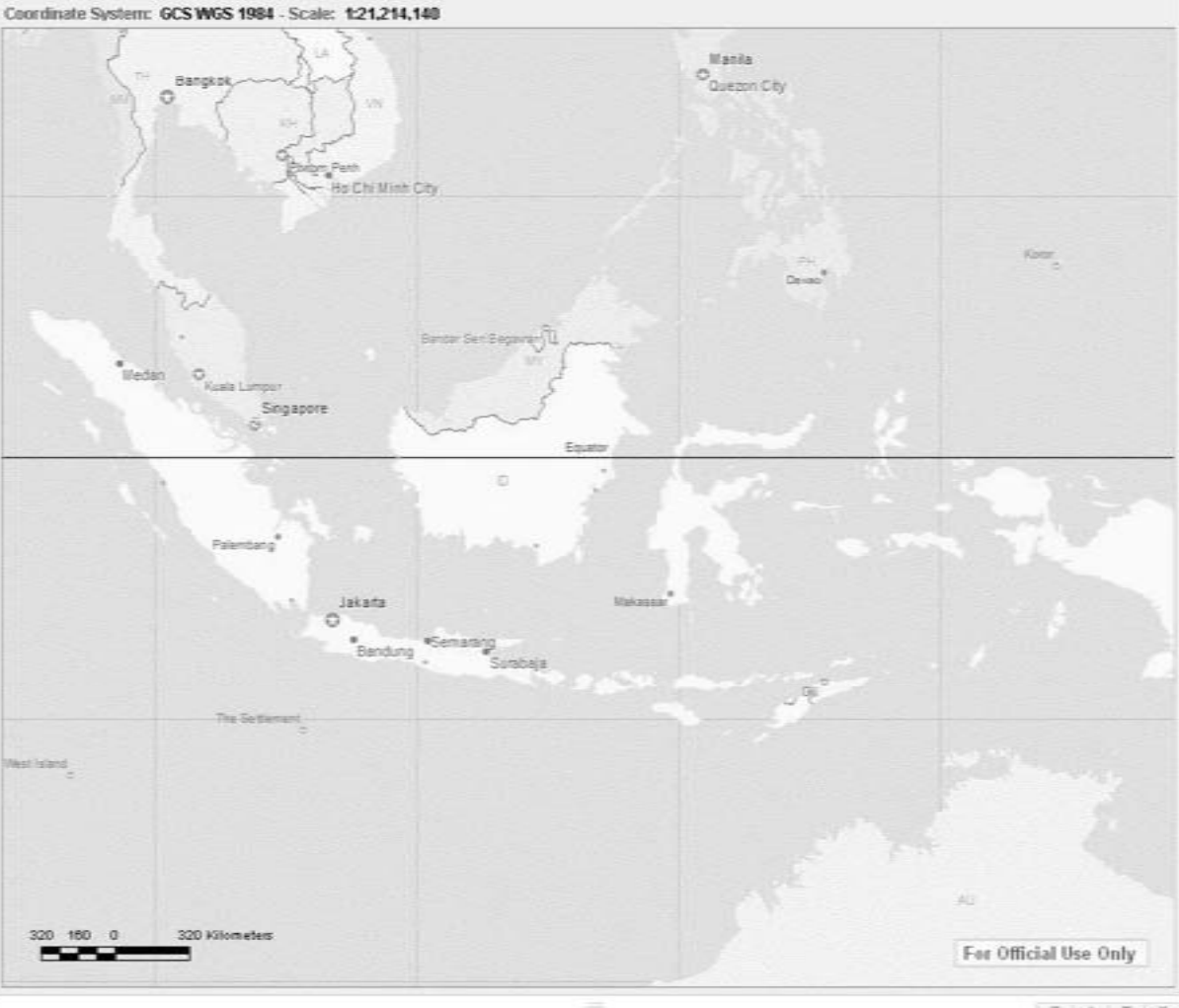
TABLE OF CONTENTS

- Freshhand Graphics
- Singapore_Map_50km_508svy_06
- 50km_508svy_08.tif
- Base_Data/Foundation_Map
- Welcome
- World Map
- aadi_fm.p2

SEARCH FOR GEO DATA



Map navigation controls including a vertical zoom slider, a search icon, a home icon, a full screen icon, and various navigation arrows.



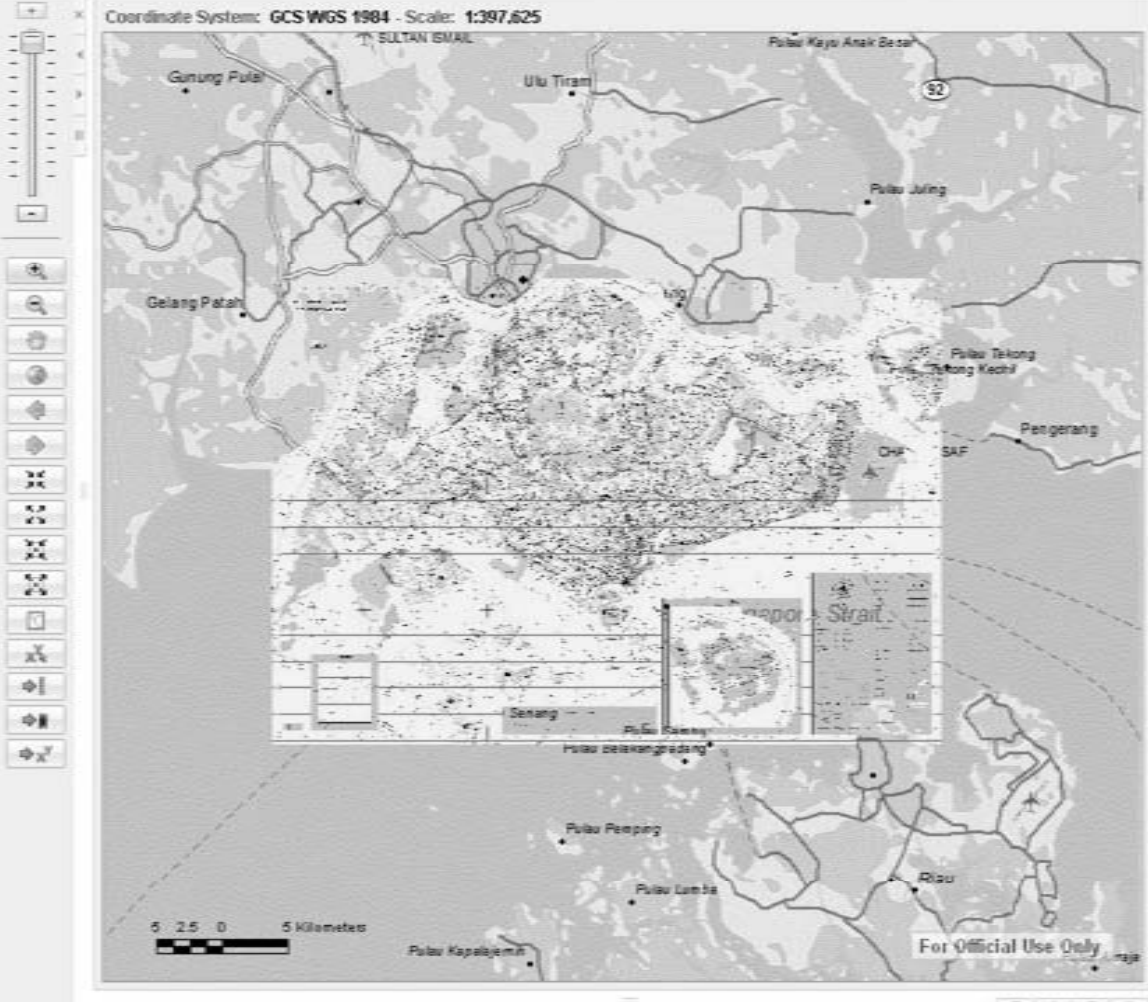
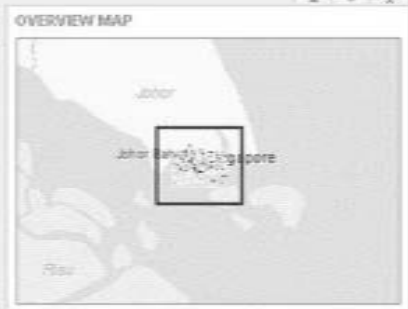


Map Viewer

TABLE OF CONTENTS

- Freehand Graphics
- Singapore_Map_50km_508svy_06
 - 50km_508svy_06.tif
 - Base_Data/Foundation_Map
 - Delete
 - World Map
 - earth_Non_GIS

SEARCH FOR GEO DATA





MAP VIEW | VIEW | SELECTION | TOOLS | PREFERENCES | Welcome, anonymous (Logout)

Map Viewer

Coordinate System: GCS WGS 1984 - Scale: 1:374,811

TABLE OF CONTENTS

- Freehand Graphics
- Singapore_Map_50km_508svy_06
 - 50km_508svy_06.tif
- Base_Data/Foundation_Map
 - Delorme
 - Airpats
 - PPL
 - Geo_Hydropoints
 - Runway
 - RD_Tunnels
 - Roads
 - RRs
 - Boundaries
 - Hydrolines
 - Contours
 - Hydropolys
 - LULC
 - Urbanpolys
 - Wood Map
 - 4adt_5m_122

SEARCH FOR GEO DATA

OVERVIEW MAP



AUSTRALIA / SINGAPORE

PROPOSAL

- Set up Web Service
- Set up link to ARF site
- Single / Central data base

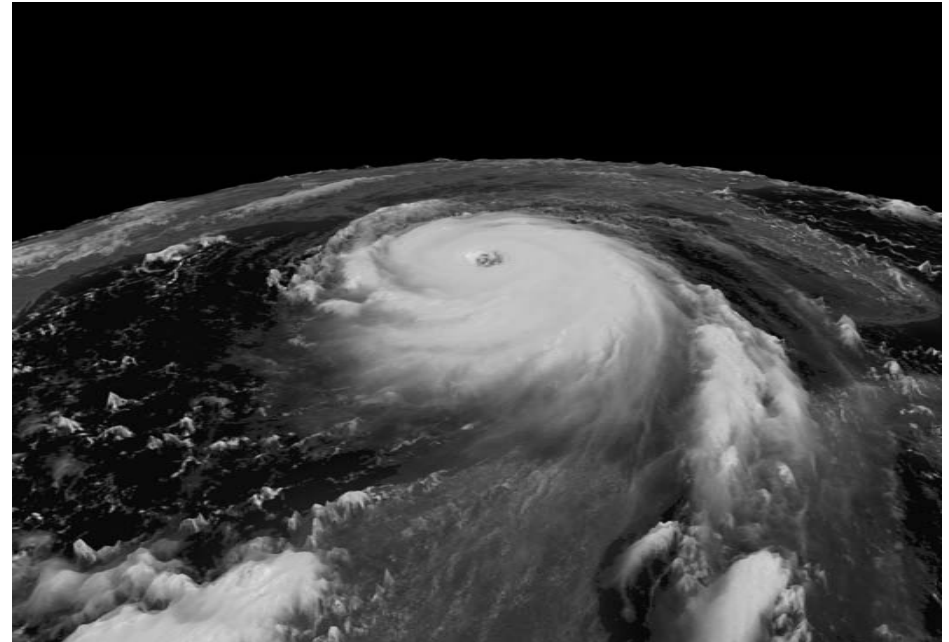
BENEFITS

- Collaborative environment
 - Information sharing
 - Interoperability
- Economies and efficiencies
 - Data acquisition, storage, and access
 - Rapid dissemination to support nations
- Expandable as confidence in the site grows

PARTICIPATING NATIONS

RESPONSIBILITIES

- Full access to site
- Voluntarily contribute data
- Can decide extent of data





Questions?

CONTACT DETAILS

ARFDRMS.HELP@defence.gov.au