



ARF ISM on HADR 2012

Brisbane, Australia

ARF Disaster Relief Mapping Service



Guenther Ebenwaldner
Defence Imagery & Geospatial Organisation
Australia



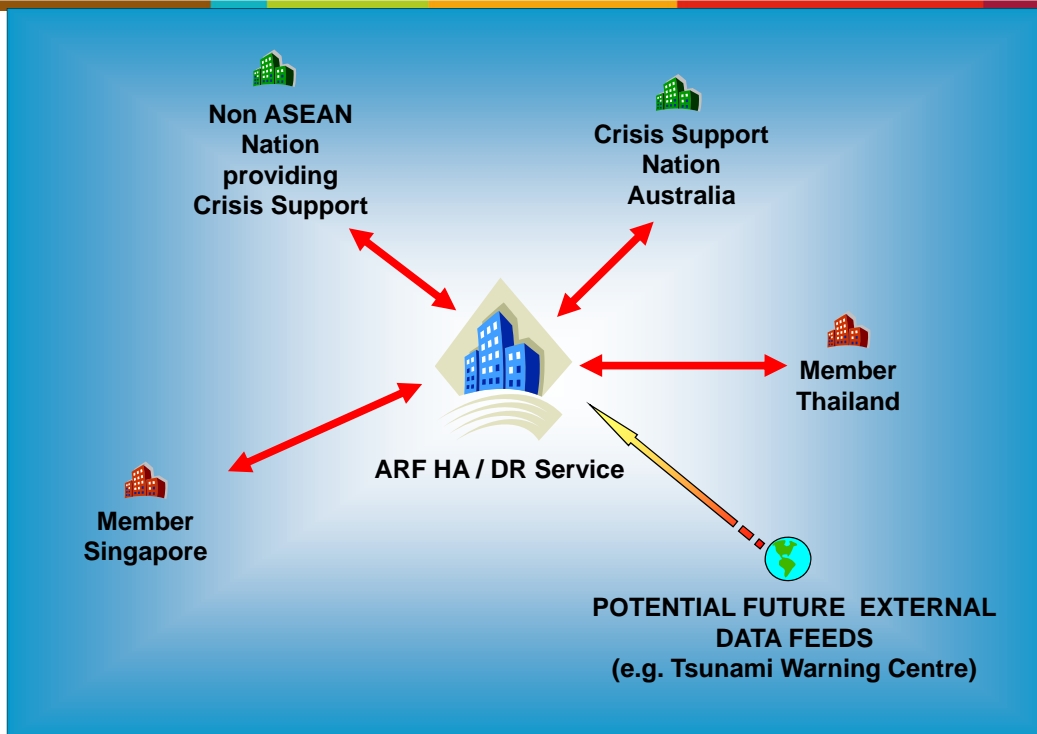


PROPOSAL

- A collaborative geospatial service
- Utilised by support nations.
- Voluntary
- Provides common support base

BENEFITS

- One stop shop
- Information sharing
- Quicker response time
- Expandable

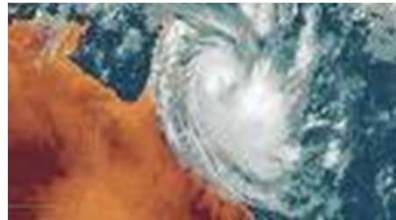




Level 1 Support data: Preparing for the Crisis

Pre-populated data

- Features
- Elevation



Level 2 Support data: Reacting to the Crisis **Maintenance and densification of data**

- Specialised data for provision of aid support
 - Aeronautical information
 - Vertical obstructions, navigation aids, etc
 - Air facilities support capabilities
- Port facilities

Level 3 Support data: Future Predictive Models*

- Inundation/flood models
- Network analysis
- Displaced populations





TIMELINE

- **ARF-DRMS became operational on 1 July 2010.**
 - **Engaged with ASEAN countries Singapore, Malaysia, Indonesia for data**
- **Presented operational system at ARF ISM – HR Sept 2010.**
- **Presented at ARF DirEx in Indonesia 14 – 19 Mar 2011.**
- **Used the ARF-DRMS system for the New Zealand Earthquake event**
 - **Christchurch** - Vector data
 - Imagery data
 - Mapping



Outstanding Issues Resolved

- **File Transfer Protocol (FTP) access has been made easier**
- **Failover created**
- **Backup regime implemented**
- **End point Security**



HOW TO USE THE SERVICE

Access to the service – should be controlled for the specific use for ARF
HADR Support and Exercises.

- Each Nation has their own access ID and Password.
 - These are available for all countries today
- Users
 - Registered users
 - Registered publishers
- How can I provide data to the service
 - Access to the FTP facility
 - Contact - arfdrms.help@defence.gov.au



Welcome, AustraliaPub [Logout](#) [My Profile](#) [Help](#) [About](#) [Feedback](#) [FAQ](#)

ASEAN Regional Forum - Disaster Relief Mapping Service

[HOME](#)[SEARCH](#)[ADMINISTRATION](#)[REPOSITORIES](#)[FTP](#)[LAUNCH MAP VIEWER](#)

FTP Services

The following FTP services are available :

Public Upload

<ftp://www.arf-drms.com/upload>

The public upload directory allows users to upload data that will be visible to all registered users of the system.

All users can [read](#), [write](#) and [delete](#) files from this location

Public Download

<ftp://www.arf-drms.com/download>

The public download directory allows users to download data and is visible to all registered users of the system.

All users can [read](#) from this location

This location is controlled by the system Administrators, if you would like your data put here contact the administrators of the system.

Private

<ftp://www.arf-drms.com/>

This is private storage for a country, data is accessible by all account that account belongs to that [country](#) and [Administrators](#).

All user of that [country](#) can [read](#), [write](#) and [delete](#) files from this location.

This Geoportal was built using the ArcGIS Server Geoportal Extension 9.3.1. Please read the [Disclaimer](#) and [Privacy](#) or [Contact Us](#).



THE FUTURE

Where do we go from here?

- Is the Service of Value to the community ?
- Does the Service have enough exposure ?
- Continued Operations – funding ?
- Engagement ?



Questions?

CONTACT DETAILS

guenther.ebenwaldner@defence.gov.au

arfdrms.help@defence.gov.au