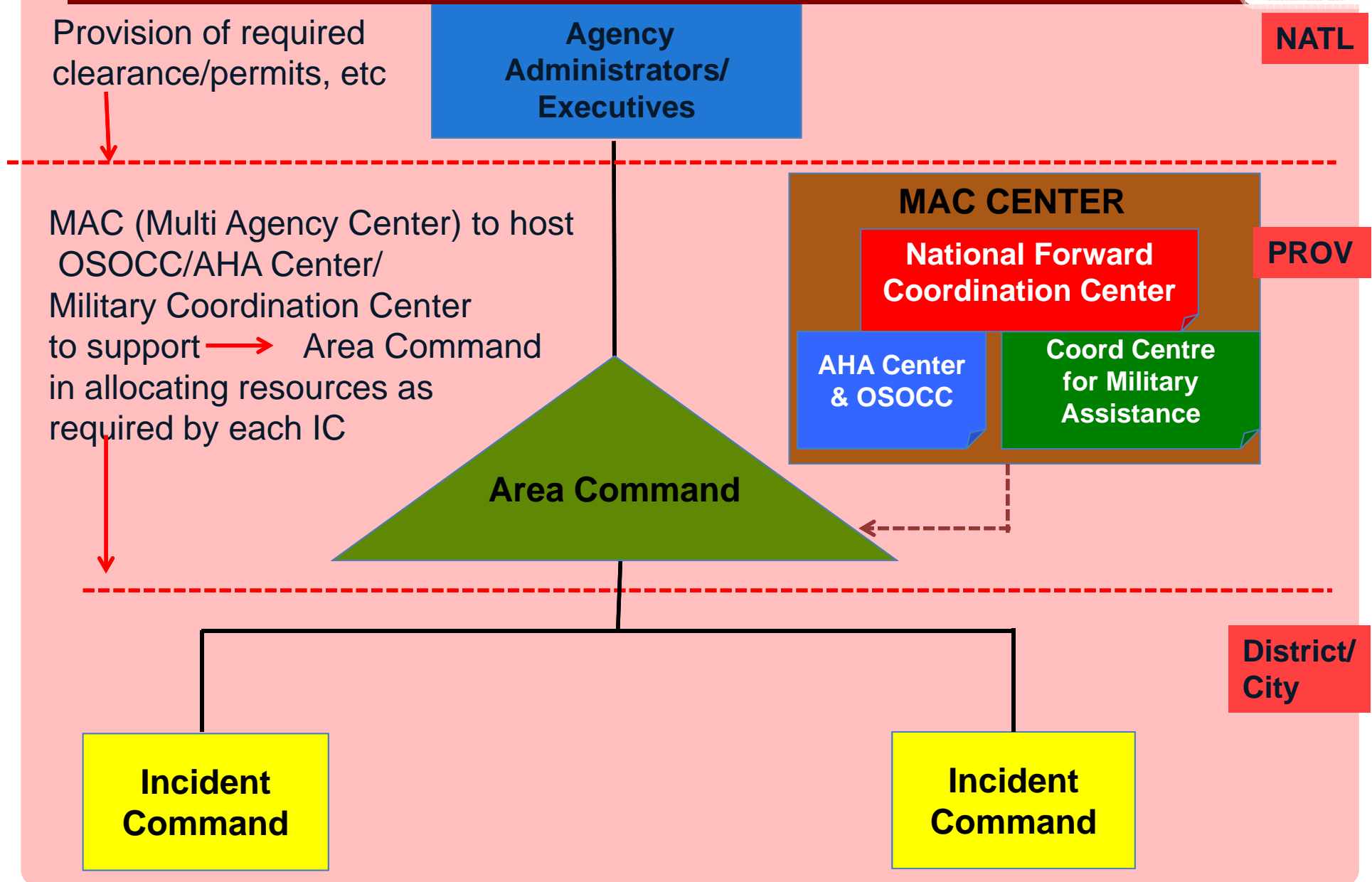




## **The Implementation Of Civil-Military Cooperation On MENTAWAI MEGATHRUST DIREX 2013-2014**

**“Strengthening Collaboration and partnership  
in disaster response  
to build a resilient region”**

# EMERGENCY MANAGEMENT SYSTEM IN INDONESIA APPLIED IN EXERCISE

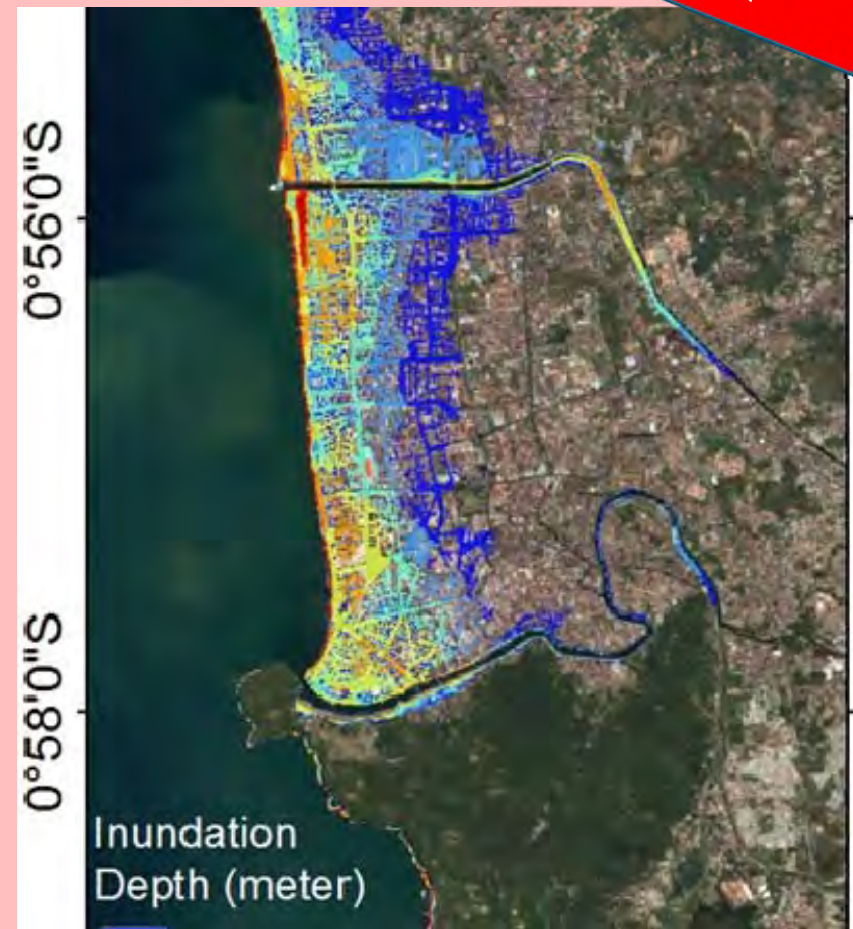


# REASONS FOR CHOOSING MENTAWAI MEGATHRUST



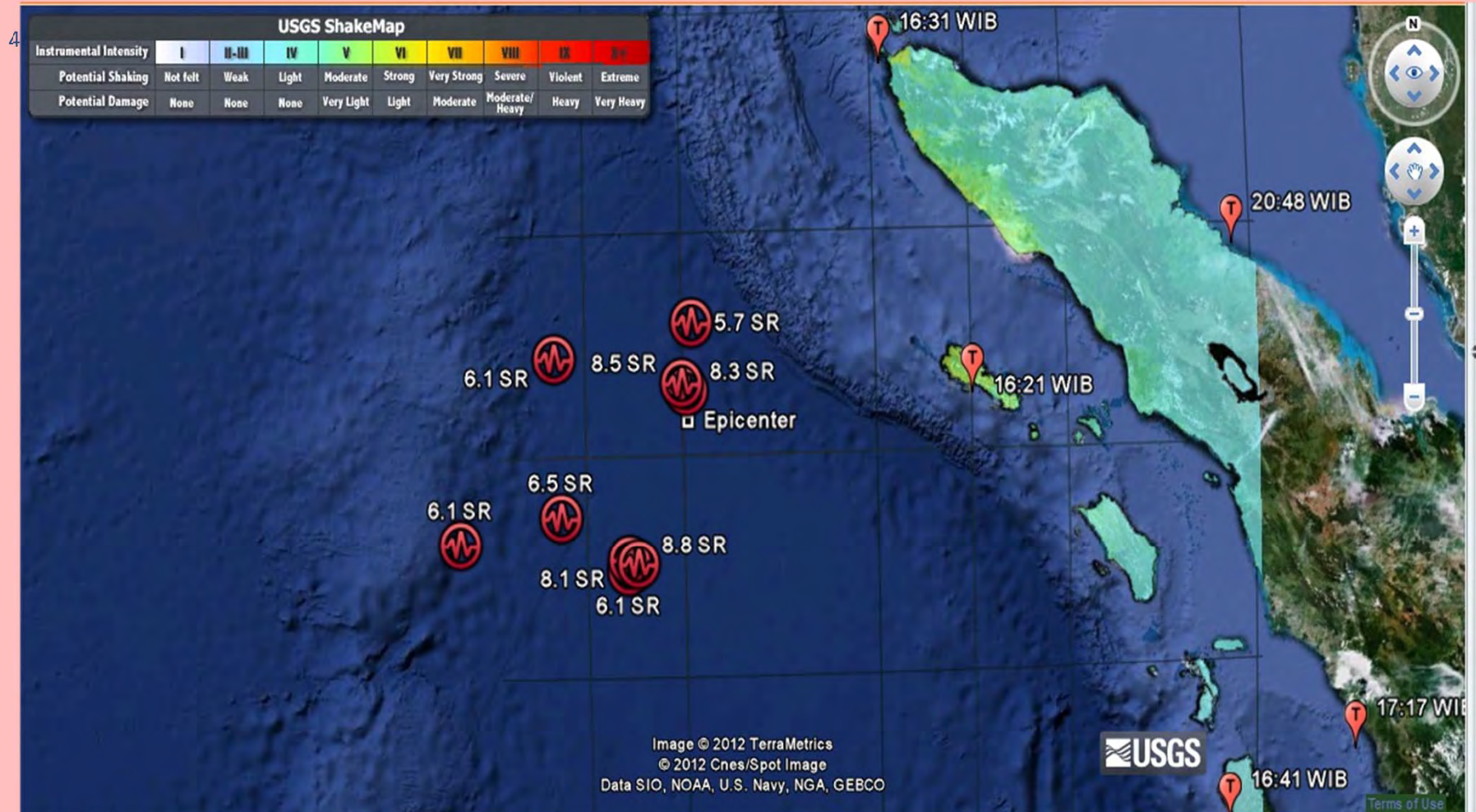
Real threat & scientific based

- Posing the high risks of 8.9 RS earthquake that triggers tsunami along the coastal areas of West Sumatra
- Vulnerability: topographic condition, limited infrastructures and facilities for evacuation, preparedness and readiness of local government and community in undertaking safe evacuation, etc.
- Approximately 1,214,234 people living in West Sumatra are at risks as 50% of them are residing in Padang City





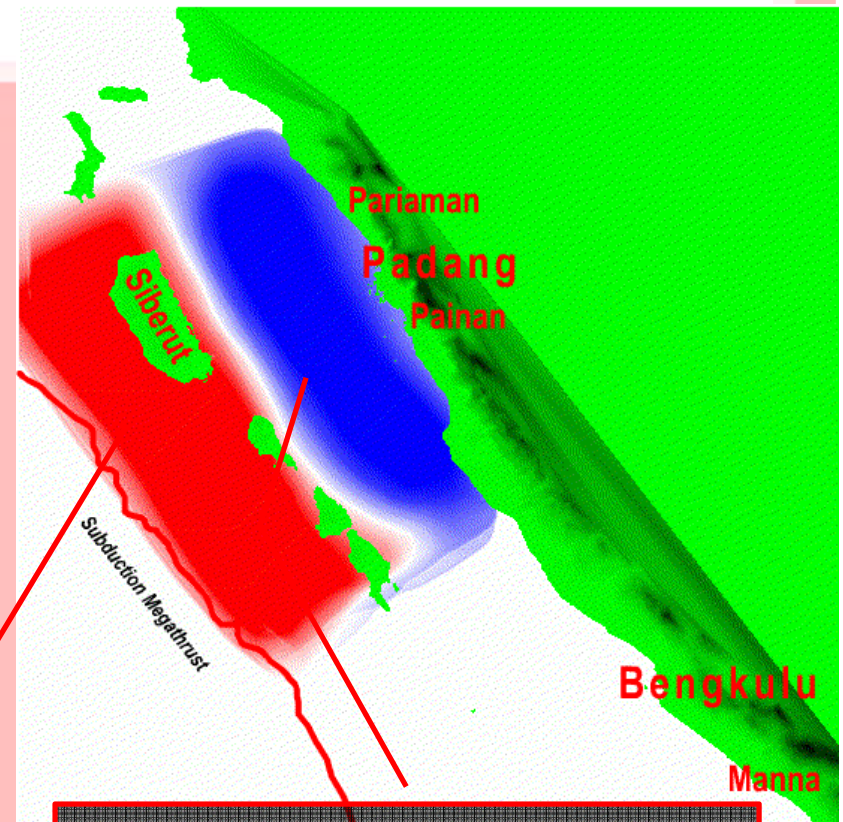
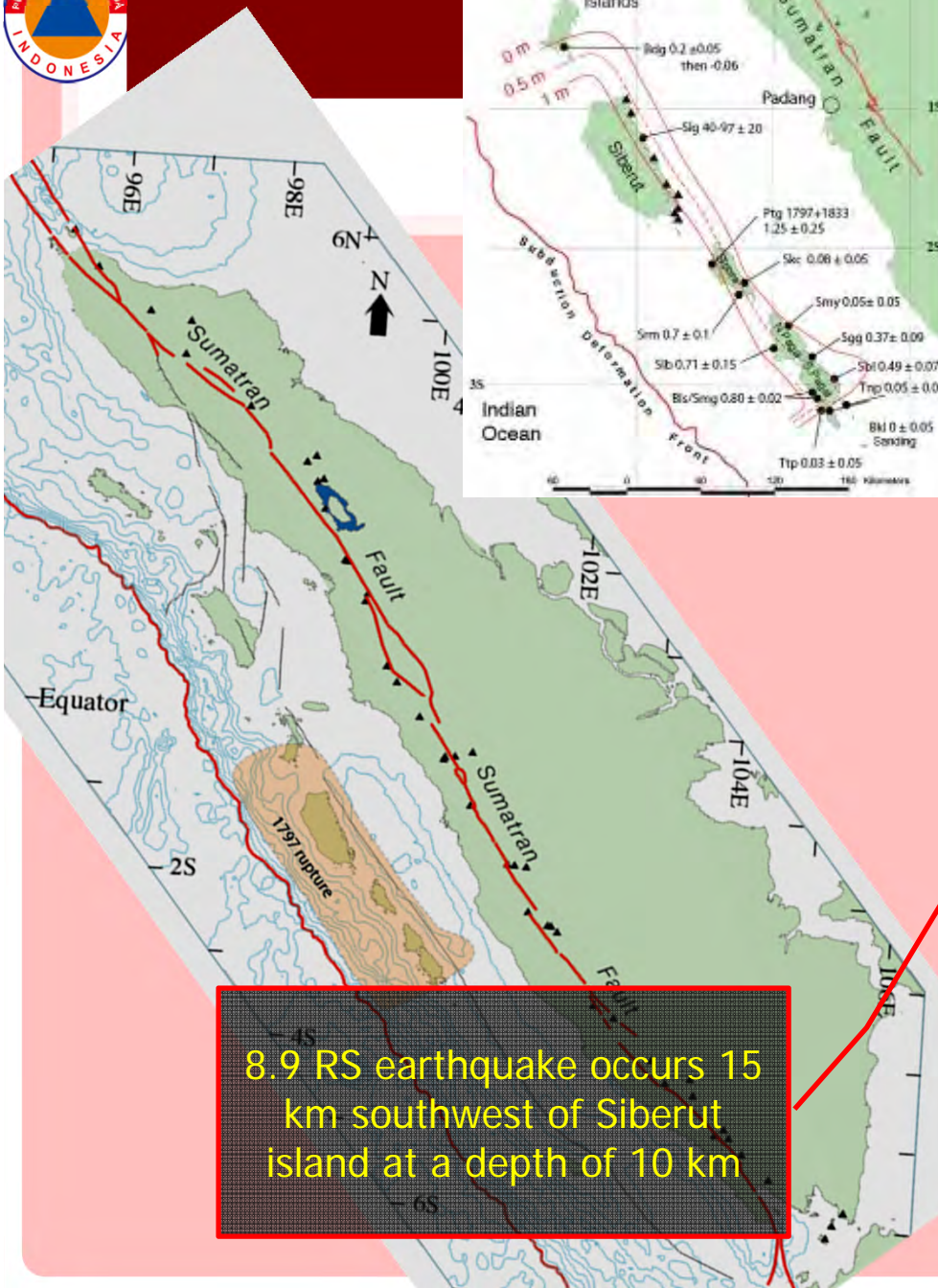
# DISASTER MAPPING



- PRIODICALLY IN SEQUENCE PER 200 YEARS  
AND APPROX IN THIS 3-5 YEAR WILL APPEAR



# SCENARIO



10 minutes after the EQ, tsunami hits Mentawai.  
35 minutes after the EQ, tsunami hits Padang City



# OVERALL OBJECTIVE & TARGETS

**Strategic Goal:** resilience in the region through enhanced partnership

**Operational:** Strengthen the capacity of preparedness through *information sharing*, enhance international cooperation to overcome the gap (debottlenecking) and to strengthen the interoperability among stakeholders in the region

**Target 1:**  
achievement of  
effective  
**information  
sharing  
mechanism**

**Target 2: enhanced  
capacity,  
cooperation and  
partnership in  
disaster  
management in the  
region**

**Target 3:**  
Tested admission  
procedure of  
**foreign aid (civil  
and military)** in  
response to natural  
disaster

**Target 4:**  
Tested operational  
integration  
between incident  
command system  
of the affected  
countries with  
systems of other  
countries in the  
region when  
providing  
assistance



# PARTICIPANTS

## ☐ Exercise Controllers

- ▣ Planners of Exercises (local, natl, Intl)

## ☐ AAR (aFTER

- ▣ Representatives from local and national government and non-govt entities
- ▣ Representatives from ASEAN member states and EAS Non-ASEAN participating countries

## ☐ Players

- ☐ Representatives from agencies normally involved in emergency situation (civil & military)

## ☐ Observers

- ☐ Anyone interested to observe; inputs and recommendations can be submitted by completing Observers' Form





# SECRETARIAT

## MENTAWAI MEGATHRUST DIREX 2013- 2014 SECRETARIAT

EDUCATION AND TRAINING CENTER OF BNPB  
Graha 55  
Jl. Tanah Abang II No. 57  
Jakarta – INDONESIA

Phone/Fax. +62 21 3860745  
secretariat@tttx@gmail.com

[www.bnpb.go.id/mmdirex2013-2014](http://www.bnpb.go.id/mmdirex2013-2014)





**THANK YOU**