

# Best Solution to key Problem of Disaster Prevention, Reduction & Relief ---Emergency Broadcast

SHI Weiling  
Beijing Jinguangtong



# Company Introduction



# Company Introduction



high tech certificate



## 中关村高新技术企业

企业名称: 北京金广通科技有限公司

编号: 20132011413411

发证时间: 2013年6月20日

有效期: 三年



# Specialized in emergency disaster relief technological products



## BJQ-C应急专用脚踏发电车

### 功能特点

- 可连续供电;
- 具有充电电量指示;
- 具有三级保护电路;
- 具有防输出线反接功能;
- 人机工程设计科学, 成本低;
- 脚踏发电设计, 可提供动力电源;
- 专用智能充电电路, 可对电池实行智能管理, 科学地延长电池使用寿命;
- 多模传动方式, 传动稳定, 无游丝, 瞬时速度均匀, 调速范围大, 传动噪声小。



## -885B应急专用自行车折叠支架发电系统

### 介

- 方便, 可折叠, 成本低;
- 智能充电电路, 可对电池实行智能管理, 科学地延长电池使用寿命;
- 电路设计, 不接外插电源;
- 稳定, 无游丝, 瞬时速度均匀;
- 方便, 只需将自行车手在系统的手柄中;
- 供电效率: >=70%
- 充电效率: >=90%
- 无充电。



## BJQ-SY65应急专用手摇发电机

### 产品简介

- 主要用途: 为便携式、便携式应急供电设备, 适用于各种采用电池供电的通讯设备、便携电脑、仪器仪表以及照明灯具等。可实现对再充电设备的连续充电或深充工作, 亦可单独蓄电充电, 尤其适用于在野外作业条件下, 电池电量不足或无电时的应急供电和充电。

### 功能特点

1. 体积小、重量轻、携带方便;
2. 整机效率高, 续航力强, 续航时间长;
3. 充电电压低, 可保证在各种环境和恶劣条件下使用;
4. 过压、过流保护性能稳定, 安全性能好。



## BJQ-888B型应急专用脚踏发电变频系统

应急专用脚踏发电变频系统采用脚踏发电, 可对外直接供电, 亦可对电源管理器充电, 电源管理器可对外接交流、直流电为小型用电设备提供应急电源。



## BJQ-ZDC03救灾专用折叠床

救灾专用折叠床 (JGT-ZDC03) 是应急救援专用器具, 折叠自如, 携带方便, 存放容易。在一些紧急的自然灾害面前, 具有不可替代的作用, 主要供受灾地区的灾民应急、医疗救治、临时转移及伤病员的转移等使用。

除地震、泥石流等自然灾害发生时, 由于人们的房屋在灾中倒塌或受损, 折叠床就成了灾民日常生活中必不可少的工具, 特别是灾后临时安置灾民, 折叠床是救灾人员、受灾灾民生活和转移的好帮手。



## BJQ-ZP救灾专用帐篷

救灾专用帐篷为全形双坡直柱篷架结构, 一端山墙开门, 另一端三角架, 篷体篷面通过拉绳拉紧, 用篷杆、篷绳及配件 (含三角架、拉绳) 三部分组成。篷体篷面颜色为天蓝色, 篷架颜色与篷布颜色一致或浅于篷布颜色。

救灾专用帐篷为全形双坡直柱篷架结构, 门上有一个三角形窗户, 一端上力开棚出口, 两侧墙上均可设置风窗。

救灾专用帐篷由篷体和篷内衬、篷杆、地铺及配件 (含三角架、篷架杆、拉绳) 五部分组成, 使用简单, 安装简便, 可单人单独使用, 安装篷内衬后作睡袋使用。



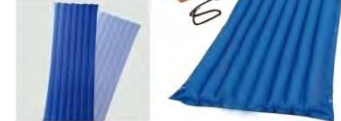
## 救灾被服-多功能睡袋



1. 样式及功能: 救灾专用多功能睡袋由上衣、两只袖子和睡袋下部部分组成, 具有睡袋和睡袋两种功能。穿上衣身和两只袖子后即可成睡袋, 穿上衣身袖套, 睡袋上衣身下摆和睡袋下部上口, 再将两只袖子卷起塞入睡袋顶部即可。
2. 救灾专用多功能睡袋分大号、小号及儿童型。
3. 面料为天蓝色涤长丝防虫纤维, 里料为天蓝色棉布, 篷料为单孔涤纶中密度纤维。

## 救灾专用气垫床

救灾专用气垫床由PVC涂布制成, 篷架及篷面, 篷、篷气垫床篷架篷面合为一体, 篷架与篷架气垫床篷面合为一体, 气垫床篷架篷面合为一体, 气垫床篷架篷面合为一体, 气垫床篷架篷面合为一体。

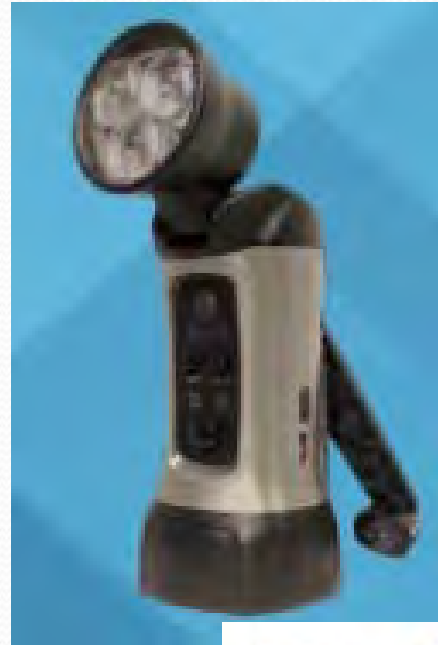


# Six series of products



emergency broadcast communication system

# Six series of products



# Six series of products



# Six series of products





# Six series of products



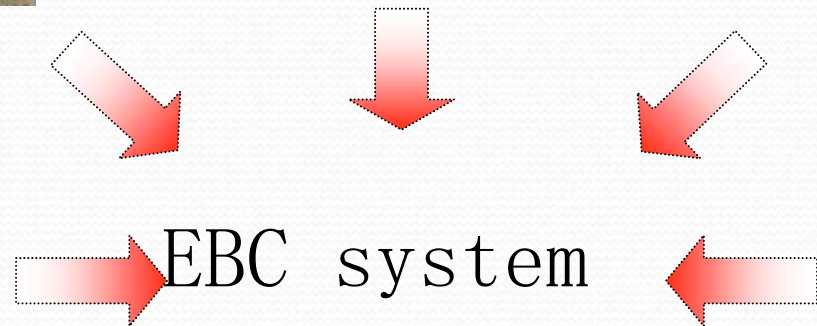


Provided 200 thousand emergency lights for Wenchuan area in 2008



CCTV news reported that products arrival in Yaan Area

# Emergency broadcast communication system



EBC system



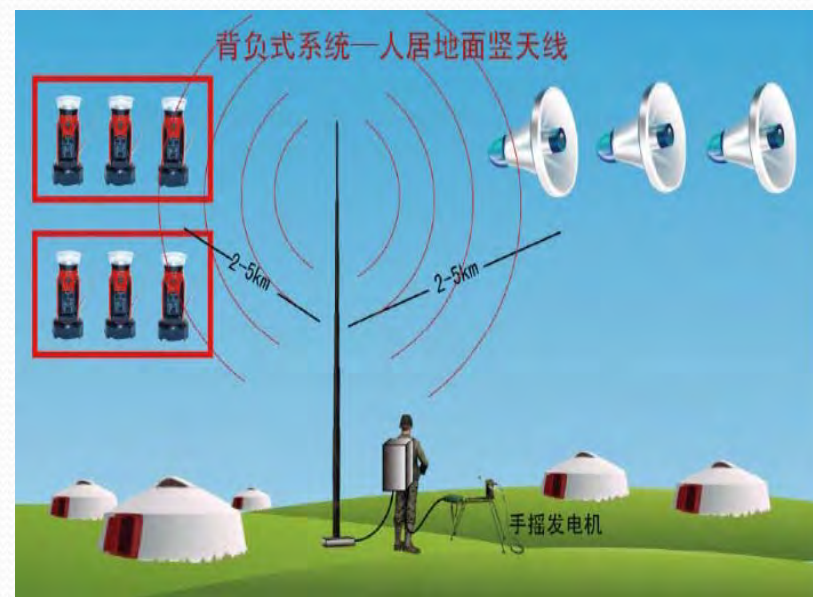
# Emergency broadcast communication system



# Emergency broadcast communication system network



- The system can also be carried by vehicle or backpack.

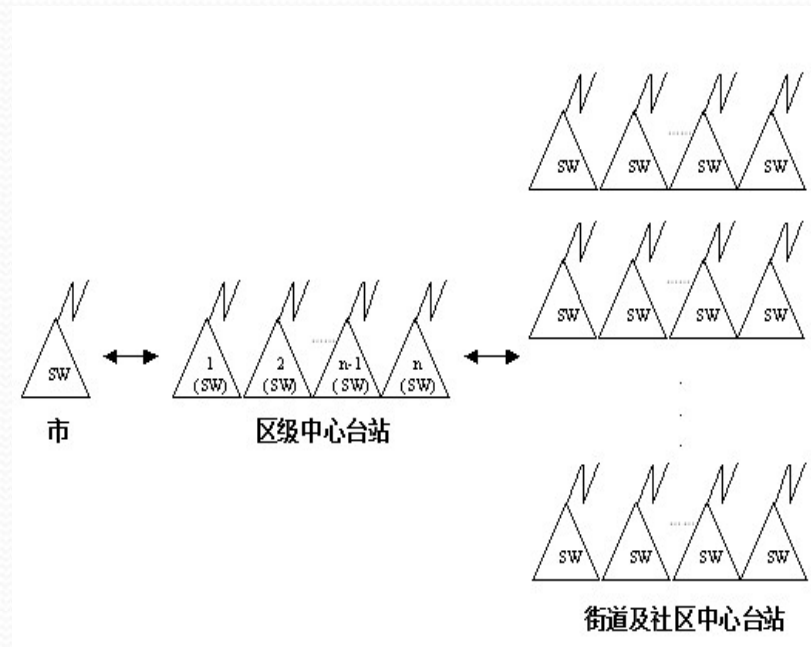


# Connect with the Satellite, internet, 3G net work





This system has a list of visually characteristics such as “organizational communication fast, release information timely, serve for target group accurately, outstanding emergency response capabilities, rich interface resources”.



# Emergency broadcast communication system

updated community management



release warning info before disaster

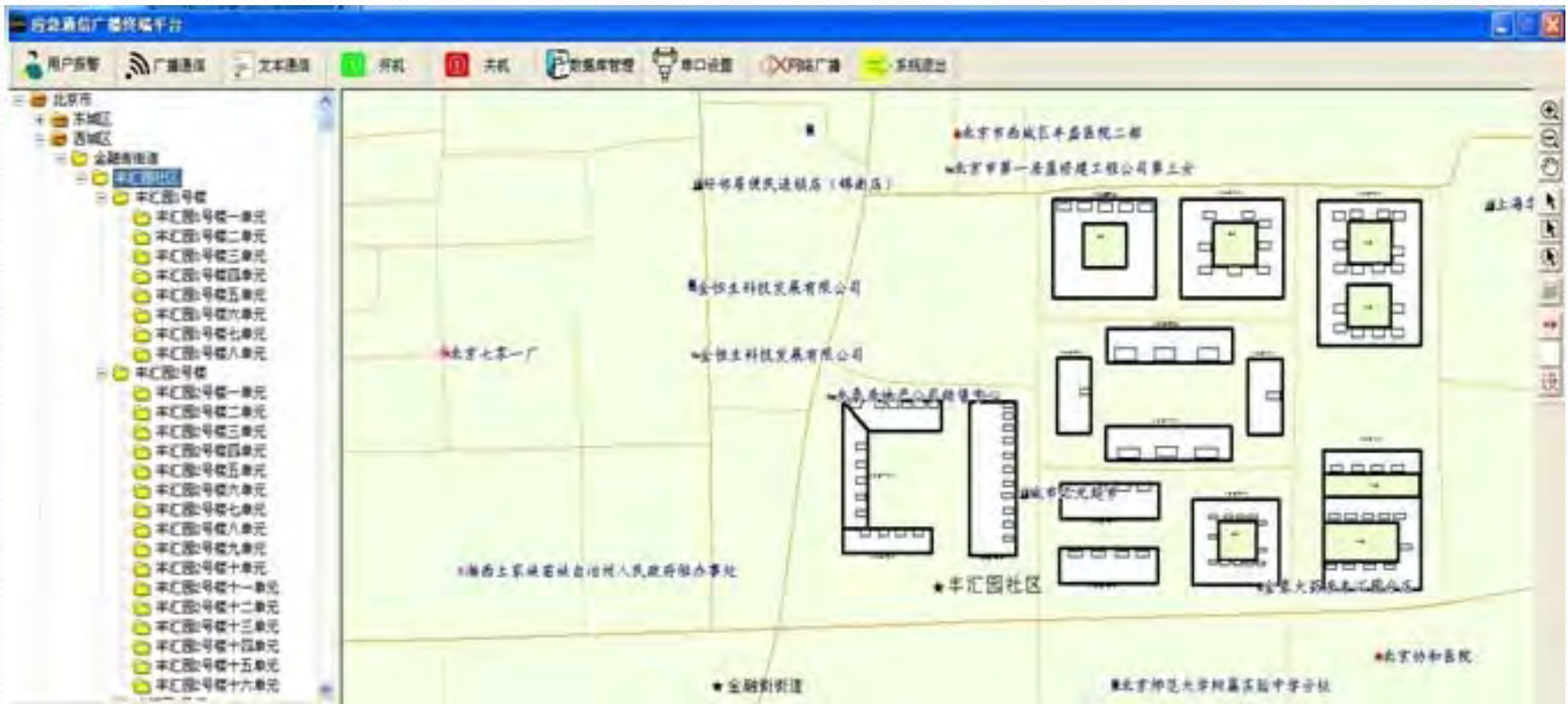


management and rescue during disaster



resettlement and maintaining





The system has been used by Beijing Civil Affairs Bureau for 5 Districts in Beijing.



Emergency broadcast communication system covered all Beijing

researched for many years on the establishment and development of emergency broadcast communication system



# The application states of emergency broadcast system



# The application states of emergency broadcast system



# The application states of emergency broadcast system

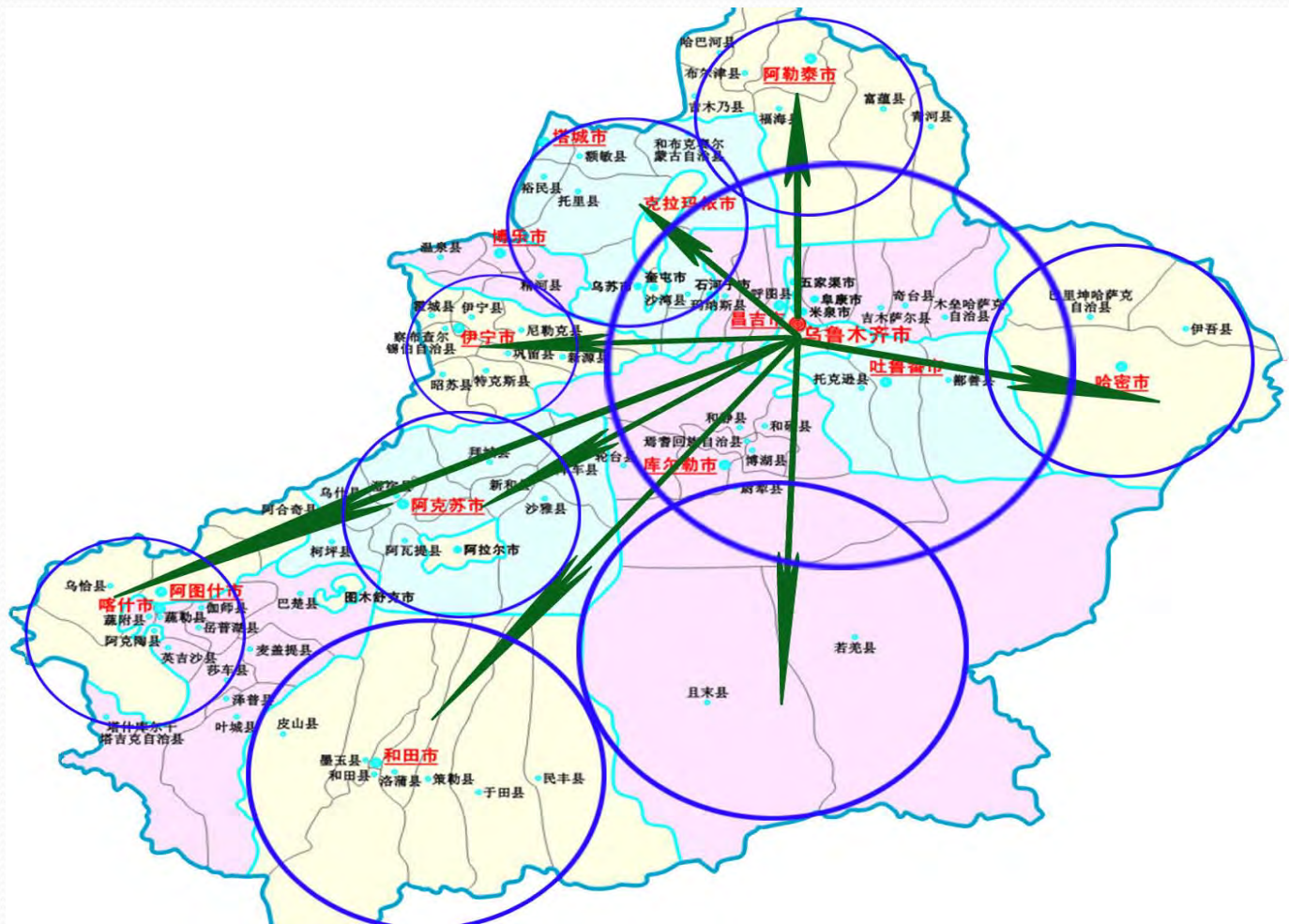


The emergency broadcast communication system has covered in six counties in Beijing, and in Inner-Mongolia



# Tv News report





Projects of emergency broadcast system has been promoted in Xinjiang and Hunan etc.

# 应急广播系统应用领域





It solved the last key problem in disaster prevention warning with the lowest cost, the most reliable technology and the fast way to promote.



**WELCOME TO OUR STAND.**

**THANK YOU!**