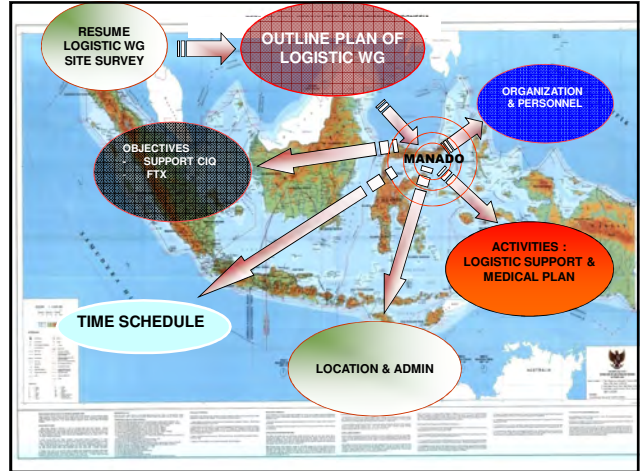


PRESENTATION OF :

LOGISTIC WORKING GROUP

<p>MASAHARU SUGIMOTO SIGIT PRIYONO REGINA RAHADI LINAWATY SAMWIL RUDIA A.HIRAYAMA AKIRA NAKANISHI</p>	<p>TIM ROLLINS Sgt. LORI MATNEY TOKUNAGA AGATHA CHRISTINE HIZOLE WARWICK KIDD SHINGO MIYAMOTO MAJ. H. INAHEMBI</p>	<p>TAKAHIRO WAKABAYASHI BUBAGYO HERU PAMBUDI JHON PAALLOAN JEANE R. WENAS NOVA KUMAJAS CHAN ROY SENDOW</p>
---	--	--



MANTEHAGE

- Sea port : not available.
- Air dropping Zone/Hellypad : near JHS no 3 Tinongko and Soccer Field Buihyas (more appropriate).
- Warehouse : Several building can be used.
- Transportation : Only when the tide is coming in, the small boat can reach the jetty.
- Distribution : can use local people.
- Support for Activities :
 - Evacuation : how many people involved (snack, food n drinks).
 - Sea SAR :
 - Log Dropping : can use local people.
 - Engineering Projects : how long, how many people involved, material for projects.
 - HCA : how long, how many people involved, material for projects.
- Communication Plan :
 - Build Communication post command facility (provided by ORARI/RAPI).
 - Assign operators to stay during the exercise and HCA
- Food and drinks : Field Kitchen to supply Bunaken and Siladen

SILADEN

- Sea Port could be a problem.
- Transportation of material to support the engineering project could be a problem.
- Warehouse : not determined yet.
- Distribution : can use local people.
- Support for Activities :
 - Sea SAR :
 - Engineering Projects : how long, how many people involved, material for projects.
 - HCA : how long, how many people involved, material for projects.
- Communication Plan :
 - Build Communication post command facility (provided by ORARI/RAPI).
 - Assign operators to stay during the exercise and HCA.
- Food and drinks : can be dropped via sea port from Mantahage Field Kitchen.

BUNAKEN

- Sea Port : Available.
- Warehouse : Several buildings are available.
- Distribution : local people.
- Support for Activities :
 - Engineering Projects : how long, how many people involved, material for projects.
 - HCA : how long, how many people involved, material for projects.
- Communication Plan :
 - Build Communication post command facility (provided by ORARI/RAPI).
 - Assign operators to stay during the exercise and HCA
- Food and drinks : can be dropped via sea port from Mantahage Field Kitchen.

MINAESA

- Support for Activities :
 - HCA Medical Care : drugs and equipments can be brought to location by small truck.
 - Water Purifier : equipments can be brought to location by small truck.
 - Road Reconstruction : equipments can be brought to location small truck, need a list of local provider for material support of the projects.
 - Sea and Air Evacuation : how many people involved, what kind of support for them ?
- Warehouse : use local government facility
- Communication Plan :
 - Build Communication post command facility (provided by ORARI/RAPI).
 - Assign operators to stay during the exercise.
- Food and drinks : supply from Wori field Kitchen.

KIMABAJO

- Support for Activities :
 - Toilet Renovation, Road and Bridge Reconstruction: equipments can be brought to location by small truck, need a list of local provider for material support of the projects.
 - Water purifier : equipments can be brought to location by small truck.
 - Search and Rescue: how many people involved, what kind of support for them ?
- Warehouse : use local government facility
- Distribution : local people.
- Communication Plan :
 - Build Communication post command facility (provided by ORARI/RAPI).
 - Assign operators to stay during the exercise.
- Food and drinks : supply from Wori

WORI

- Support for Activities :
 - Road Reconstruction: equipments can be brought to location by small truck, need a list of local provider for material support of the projects.
 - HCA Medical Care : equipments can be brought to location by small truck.
 - Sea and Air Evac: how many people involved, what kind of support for them ?
- Air Dropping Zone/ Helly pad : Available.
- Warehouse : use local government facility
- Distribution : local people.
- Communication Plan :
 - Build BTS Mobile.
 - Build Communication post command facility (provided by ORARI/RAPI).
 - Assign operators to stay during the exercise.
- Field Kitchen : to supply Wori itself, Kimabajo and Minaesa, distributed by small trucks

MAASING

- Support for Activities :
 - Tsunami Drill : How many local people will be involved in this activity.
 - HCA Medical Care : equipments can be brought to location by small truck.
 - Shelter :
- Communication Plan :
 - Build BTS Mobile.
 - Build Communication post command facility (provided by ORARI/RAPI).
 - Assign operators to stay during the exercise.
- Field Kitchen : to supply Maasing activity.

BLUE BANTAR

- Support for Activities :
 - URBAN SAR : How many will be involved ? How long this activity?
- Warehouse : Not determined yet
- Communication Plan :
 - Build Communication post command facility (provided by ORARI/RAPI).
 - Assign operators to stay during the exercise.
- Food and drinks : supply from Maasing

COMMAND POST

- Support for Activities :
 - Command and Control all activities.
- Communication Plan :
 - Build Communication post command facility (provided by ORARI/RAPI).
 - Video Monitoring Capabilities.
 - Assign operators to stay during the exercise.
- Food and drinks : supply from Maasing





HORIZONTAL COORDINATION LOGISTIC WG

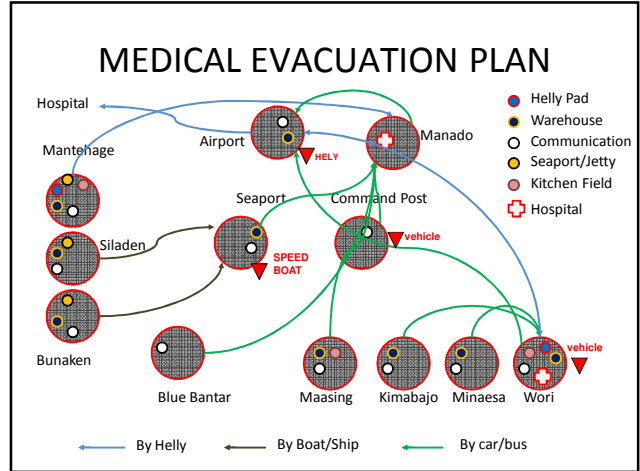
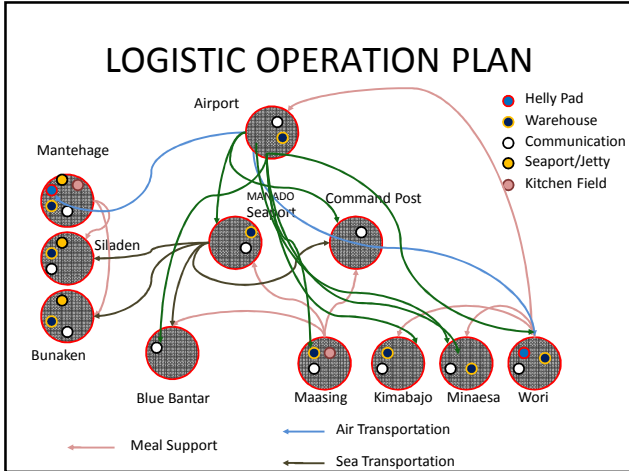
- Will help others WG with information and activities such as :
 - Where you can get local material for engineering projects.
 - Where the warehouse is
 - How to loading and unloading from aircraft, ship, boat and truck.
 - How to move material from one site to another site.
 - How to distribute materials to the activity spot.
- Will help to facilitate support for foreign military by Indonesian Military based on previous bilateral agreement.

LOGISTIC NEEDS

- Each WG should assign a person as LO for Logistic WG.
- Each WG should inform Logistic WG what their needs.
- Based on those information, Logistic WG will develop **Logistic Operation Plan** to support the exercise and HCA.

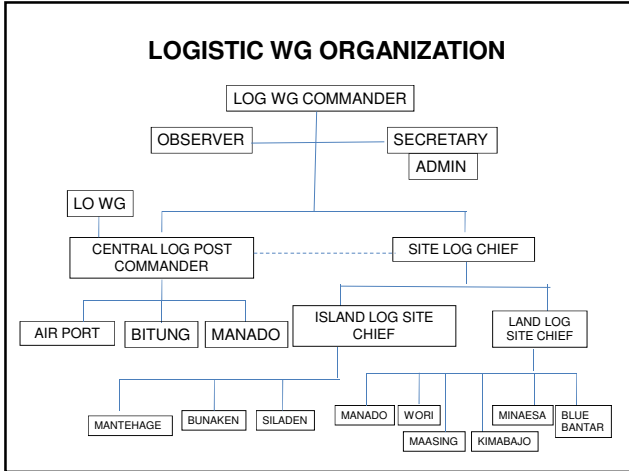
Objective : Log Working Group

1. To support CIQ for multinational entry
2. To Support all operations for logistic matters
3. To develop cooperation and interoperability logistic among ARF nations'
4. To give recommendation and strategic input for Logistic support for ARF.
5. To facilitate a balance in various national, regional and international logistic protocols on disaster relief.



- ### LOGISTIC WG ACTIVITIES PLANNING
- ENTRY POINT (AIRPORT & SEA) SUPPORT CIQ
 - UNLOADING AREA /DEBARKASI
 - USING EQUIPMENT FOR (UNLOADING)
 - SAVING TO WARE HOUSE
 - CONTROLLING ON LOG. POST COMMAND
 - DEPLOY POINT
 - LOADING / EMBARKASI AREA
 - DISTRIBUTING (LAND LOGISTIC ROAD & AIR)

- ### LOGISTIC DROPPING ZONE
- ISLAND
 - UNLOADING / DEBARKASI
 - USING EQUIPMENT FOR (UNLOADING)
 - SAVING TO WARE HOUSE
 - DISTRIBUTING (LOGISTIC ROAD TO SITE POINT)
 - CONTROLLING ON LOGISTIC SITE POST
 - UTILIZING OF LOCAL HUMAN RESOURCES
 - VILLAGE AREA
 - UNLOADING AREA
 - USING EQUIPMENT FOR (UNLOADING)
 - SAVING TO WARE HOUSE
 - DISTRIBUTING (LOGISTIC ROAD TO SITE POINT)
 - CONTROLLING ON LOGISTIC SITE POST
 - UTILIZING OF LOCAL HUMAN RESOURCES

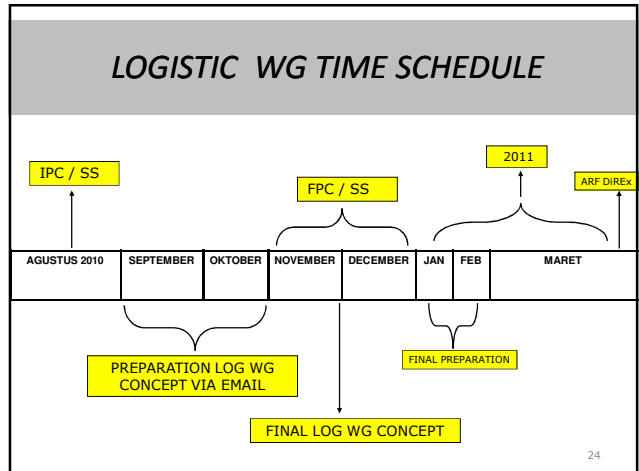


Personnel

	COUNTRY	CIVILIAN	MILITARY	TOTAL
CO - HOST	INDONESIA	4000 (1500 TSN.D)	1000	5000
	JAPAN	50	300	350
PARTICIPANTS	USA			
	AUSTRALIA			
	NEW ZEALAND			
	SINGAPORE			
	PHILIPPINES			

Personnel On Site

COUNTRY	LOG POST COMMAND	SITES								TOTAL	
		AIRPORT	BITUNG	BUNAKEN	SILADEN	MANTHAG E	WOR I	KIMABAJO	SINDULANG		MANAD O
JAPAN											350
INDON ESIA		500	500	500	500	500	1000	1000	1000	1000	6500
USA											



Logistic Support

MARET 2011									
12	13	14	15	16	17	18	19	20	
PREPARATION	SUPPORT	C	I	Q	A C C O M M O D A T I O N	TTX			
						FTX -TRANSPORTATION -LUNCH -LOG SUPPORT ETC			

QUESTIONS ?

