

AIR OPERATION WORKING GROUP REPORT

PARTICIPANT CONTRIBUTIONS

NO	NATION	CONTRIBUTION		CAPABILITY	STATUS
		ASSETS	QTY		
1	INDONESIA	a. C-130	2	Heavy cargo airlift	Confirmed
		b. C-212/CN-235	1	a. Aerial survey & mapping	Confirmed
				b. Light cargo airlift and dropping	
		c. Puma/Super Puma (Heli)	1	a. SAR (Land & sea/hoist)	Confirmed
		& SAR team		b. Cargo airlift	
				c. Evac/ medivac	
		d. BO-105 (Heli)	2	SAR (Land & sea/hoist)	Confirmed
		e. Mobile communication & team	1	Heliports ATC & limited wx service	Confirmed
2	JAPAN	a. C-130	1	Medical Evacuation	Confirmed
		b. UH-60	1(1)	SAR	Confirmed
		C. UH-1	2	A.Cargo airlift	
				b. Evac/ medivac	

PARTICIPANT CONTRIBUTIONS (CONTINUED)

	JAPAN	c. Medical container unit	1	Air medical evacuation system	Confirmed
	(cont'd)	d. Mobile communication team	1	Heliports ATC support	Confirmed
		e. Wx support team	1	Wx service support	Confirmed
3	USA	CH-46 CH-53 UH-1			TBC
4	SINGAPORE	Chinook	1	a. Cargo airlift	Indicative
				b. Evac/ medivac	
5	INDIA				TBC

Locations/Sites

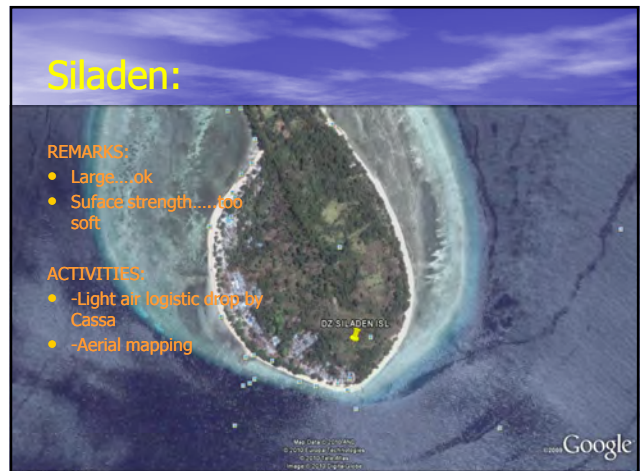
- Sam Ratulangi International Airport
- DZ/ Heliport/ SAR Sites
 - Mantehage Island
 - Siladen Island
 - Bunaken Island
 - Wori Village
 - Minaesa Village
 - Manado City (Blue Banter/ MCC)

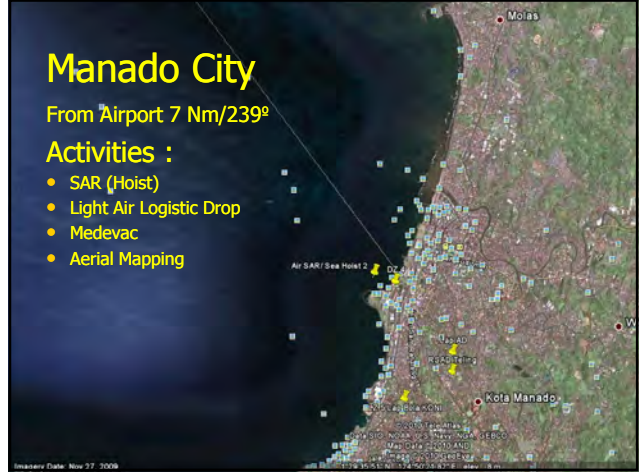
Sam Ratulangi Int'l Airport

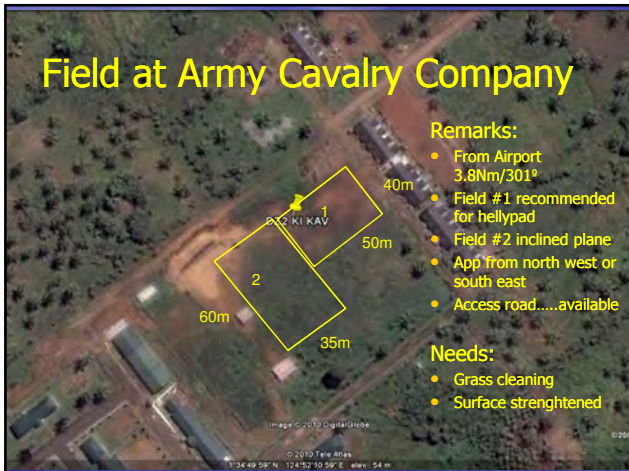
- Sam Ratulangi Int'l Airport (WAMM)
- Coordinate : 01°32'44" N - 124°55'30" E
- Nearest City : Manado
- Dist : ± 13 km
- Elev/ temp reference : 81 m (262ft) MSL / 31°C

Possibility of Activity at Airport

- Command Post operations
- Air Traffic Planning
- CIQ Process
- Gound Handling & Cargo Distribution
- Airlift
- Air Medivac







- ### DZ/ Hellypad/ SAR Sites
- **Mantehage Island :**
 - Helly cargo dropping
 - Air evacuation/ medevac
 - Aerial survey and mapping
 - **Siladen Island:**
 - Light cargo dropping
 - **Bunaken Island:**
 - SAR(hoisting over water)
 - **Wori Village:**
 - Helly cargo dropping
 - Air evacuation/ medevac
 - Aerial survey and mapping
 - ATC & WX support
 - **Minaesa Village:**
 - SAR (hoisting over water)
 - **Manado City:**
 - Light cargo dropping
 - SAR (hoisting over water)
 - USAR(helly repelling)
 - Air medevac
 - Aerial survey and mapping

Concept of Exercise

DAY0 (DV mission)

- SAR hoisting over water at Manado Bay (Basarnas)
- Low pass over Blue Banter by 2*UH-60J (Black hawk) and 2*UH-1(Huey).
- Static display of C-130 with aero medical evacuation system.

Concept of Exercise

DAY1

- Cargo airlift, C-130 (TNI-AU) arrival, ground handling activity at airport.
- Aerial mapping over Mantehage & Wori by C-212 Cassa.
- Helly cargo airlift to Wori, by Helly (TNI AU)
- Helly cargo (water purifier) to Mantehage (TNI AU/Singapore)
- SAR hoisting over water at Minaesa Bay (Basarnas)
- SAR (Singapore)?
- C-130 Medevac (aero medical evacuation system)
- SAR around Bunaken island by UH-60J (Black hawk).
- ATC & WX support at Wori village (Landing zone)
- Air Lift between Wori & Airport by UH-1(Huey)

Concept of Exercise

DAY 2

- Helly box dropping over Manado city by C-212 Cassa (TNI AU/ Demo)
- SAR, sea survivor hoisting at Manado Bay by Helly (TNI AU/Demo)
- SAR hoisting over water at Mantehage Bay (Basarnas)
- SAR (Singapore)?
- C-130 Medevac (aero medical evacuation system)
- SAR around Bunaken island by UH-60J (Black hawk).
- ATC & WX support at Wori village (Landing zone)
- Air Lift between Wori & Airport by UH-1(Huey)

Concept of Exercise

DAY 3

- Cargo airlift, C-130 (TNI-AU) arrival, ground handling activity at airport.
- Helly box dropping over Siladen Island city by C-212 Cassa (TNI AU/ Demo)
- Logistic airlift & Medevac at Mantehage by Helly (TNI AU)
- SAR hoisting over water at Bunaken Bay (Basarnas)
- SAR around Bunaken island by UH-60J (Black hawk).

AIR OPS TRAINING SCHEDULE (INDONESIA & JAPAN DRAFT DETAILS)																
	13		14		15		16		17		18		19		20	
	AM	PM	AM	PM	AM	PM	AM	PM	AM	PM	AM	PM	AM	PM	AM	PM
CP																
SAR																
LOGISTIC DROP																
AIR LIFT (HELO CARGO)																
MAPPING																
MED EVAC																
ATC&WX SUPPORT																
DEMO/ DISPLAY																

FOLLOW UP (Road Map) PLAN							
	SEP	OCT	NOV	DEC	JAN	FEB	MAR
Maintenance Support capability		★		FPC			FTX
Determine assets of every country		★					
Coordination with Airport		★					
-Standby room/ -Command Post Location -Frequency assign -Slot assign							
Establish Joint Operation procedure / In-flight guide				★			
-De confliction plan -Go/No-go decision(Weather)							
LZ preparation							★
CIQ plan				★			
DV Mission Plan /Opening Ceremony Plan				★			

Thank You!



Joint Procedures

(tentative agenda)

- Command Post:
 - Dispatcher duty from Japan and Indonesia.
- Aircraft parking arrangement:
 - Helicopters :
 - Fixed wing:
 - VIP:
- Minimum flying altitude over people population:
 - General flight: 1500 ft
 - Exercise flight: under pilot judgement
- Ground to air communication:
 - Local flight follow ATC instructions, for landing/manouver at site under pilot judgement and coordinate with ground controller.
- Cargo handling procedure

- Runway : 18 - 36
 - a. Bearing : 182° - 002°
 - b. Dimension : 2.650 m x 45 m
 - c. Surface Strenght : PCN 72 / F / C / X / T
 - d. Slope Run Way 18/36 : Slope of North RWY 0,097 %
Slope of South RWY 0,093 %
 - e. Construction : Asphalt & concrete
 - f. Taxiway width : 27 m
 - g. Operating hrs : 07.00-21.00 LT, extended
operating hrs on request
- Apron
 - a. Dimension : 513 m x 104,42 m (44.000 meter sq)
 - b. Konstruksi : Concrete Asphalt
 - c. Kekuatan : Stands 1-5,62 F / C / X / T
: Stands 6-13 72 F / C / X / T