



FEMA

Emergency Management Overview



April 3, 2019
Sean M. Crawford
Director, CBRN Office

FEMA's Strategic Plan 2018 – 2022

Our Mission

Helping people before, during, and after disasters



FEMA Vision:
A prepared and resilient Nation.

Goal 1 – Build a Culture of Preparedness

- Every segment of our society, from individual to government, industry to philanthropy, must be encouraged and empowered with the information it needs to prepare for the inevitable impacts of future disasters.

Goal 2 – Ready the Nation for Catastrophic Disasters

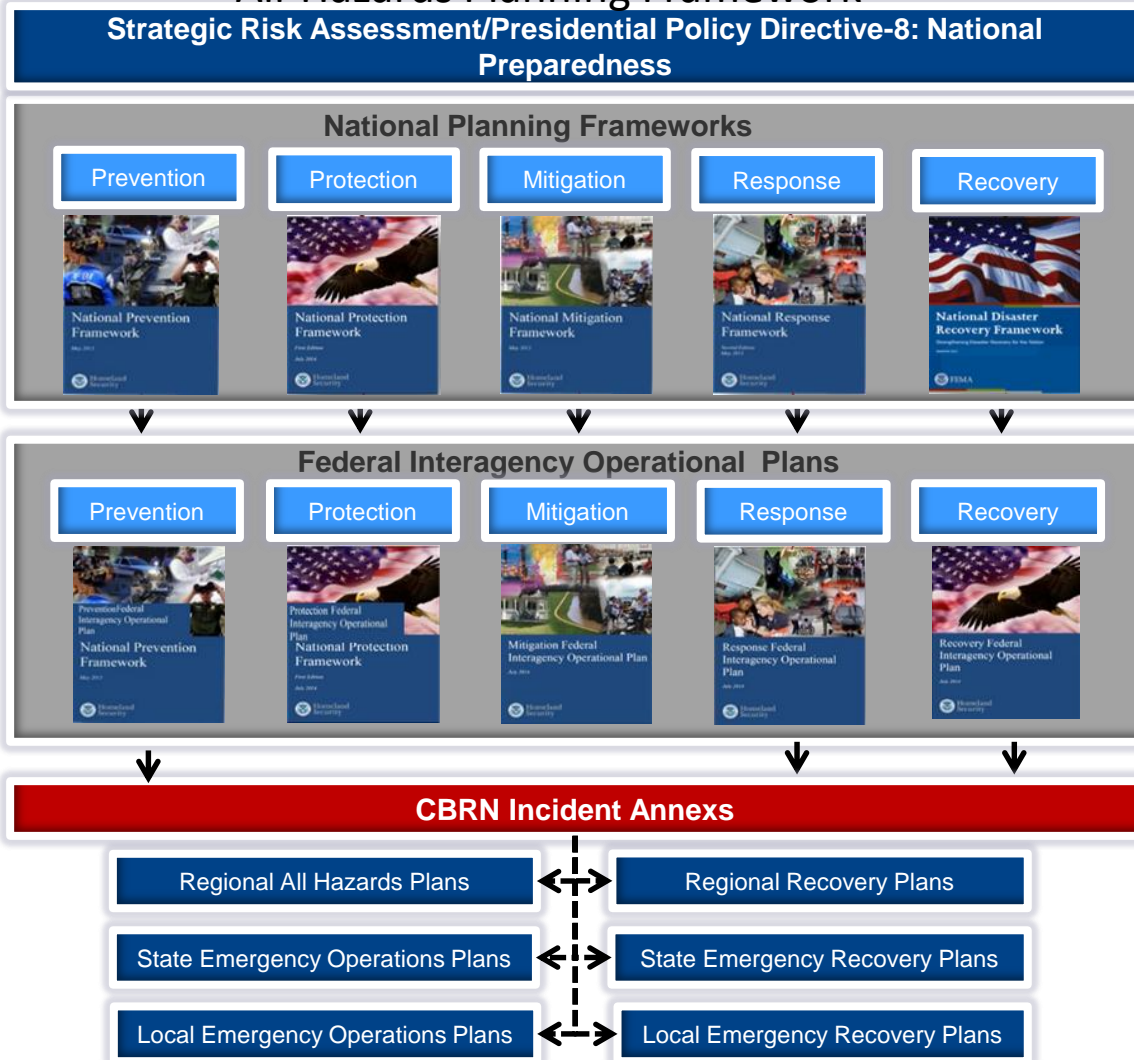
- FEMA will work with its partners across all levels of government to strengthen partnerships and access new sources of scalable capabilities to quickly meet the needs of overwhelming incidents.

Goal 3 – Reduce the Complexity of FEMA

- FEMA must continue to be responsible stewards of the resources we are entrusted to administer. We must also do everything that we can to leverage data to drive decision-making, and reduce the administrative and bureaucratic burdens that impeded impacted individuals and communities from quickly receiving the assistance they need.

National Response Framework (NRF)

All-Hazards Planning Framework



"Helping people before, during, and after disasters"

The National Response Framework is:

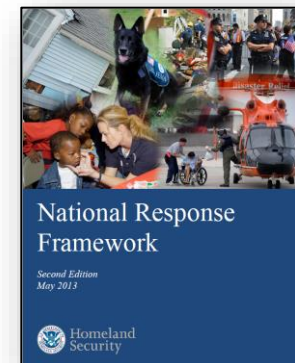
- Essential component of the National Preparedness System
- Strengthening the security and resilience of the US thru preparation
- Five mission areas:
 - Prevention, Protection, Mitigation, Response, & Recovery

Purpose of the NRF is:

- A Guide to how the Nation responds to all types of disasters & emergencies
- NRF describes the authorities & best practices for managing incidents
- Response: actions to save lives, protect property & environment, stabilize communities, meet basic human needs following incident
- Response includes emergency plans & actions to support short-term recovery

Key Feature of NRF:

- ESF Annexes
- Support Annexes
- Incident Annexes



National Incident Management System (NIMS)

The National Incident Management System (NIMS):

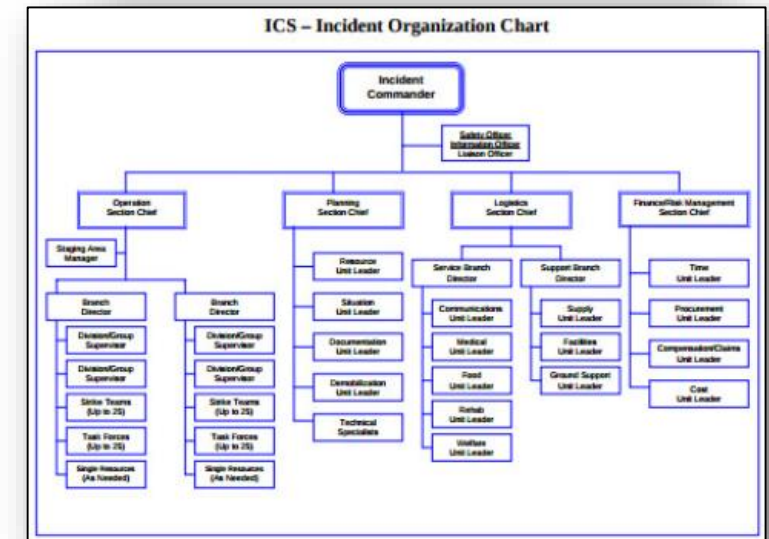
- Standardized approach to incident management
- Established in 2004
- Facilitates coordination between all responders (including all levels of government with public, private, and nongovernmental organizations).¹
- Revised once in 2008
- *SLTTs required to adopt NIMS to receive FEMA Grants*

Purpose of the NIMS is:

- Provide a common approach for managing incidents
- Consistent approach to operational structures and supporting mechanisms
- Integrated approach to resource management

Key Feature of NIMS is the Incident Command System:

- Standardized management tool for small/large emergency/non-emergency incidents
- Enables effective/efficient IM by integration of a common organizational structure & is scalable



Emergency Support Functions (ESFs)

Background:

- ESFs provide the structure for coordinating Federal interagency support for Federal response to an incident
- Mechanism for grouping functions most frequently for declared disasters and emergencies
- Incident Command System (ICS) provides flexibility to assign ESFs based on incident need
- ESF members consist of personnel from Federal & NGAs, SMEs who act for their agencies/organizations in collaborative environment

ESF Notification & Activation:

- NRCC develops & issues OPODs to activate ESFs based on need
- ESF primary agencies notified of activation; they notify pre-designated personnel to respond

ESF 1 – Transportation
ESF 2 – Communication
ESF 3 – Public Works / Engineering
ESF 4 – Firefighting
ESF 5 – Information and Planning
ESF 6 – Mass Care
ESF 7 – Logistics
ESF 8 – Public Health
ESF 9 – Search & Rescue
ESF 10 – Oil & HAZMAT
ESF 11 – Agriculture
ESF 12 – Energy
ESF 13 – Law Enforcement
ESF 14 – Private Sector
ESF 15 – External Affairs

***ESF's are the key to the NRCCs coordination efforts in that bringing all assets of the Federal Government together in one location to work in harmony to accomplish the mission**

Mission Assignments

A work order issued to a Federal agency by FEMA, with or without reimbursement, directing completion of a specific task, and citing funding, other managerial controls, and guidance

Pre-scripted Mission Assignment (PSMA)?

- PSMA is a Statement of Work prepared in advance to facilitate rapid response
- 2006: 44 PSMA's with 2 Agencies
- 2015: 267 PSMA's with 32 Agencies*

Key PSMA Examples:

- DoD: Aero-Medical Patient Evacuation, USS Kearsarge
- USCG: Logistics Support, Rotary Wing Lift
- HHS: Medical Care and Support, NDMS Patient Evacuation
- USACE: Debris, Temp Power, Temp repairs (Blue Roof)

Agencies with largest numbers of PSMA's:

- USACE: 48 PSMA's
- DoD: 28 PSMA's
- HHS: 18 PSMA's

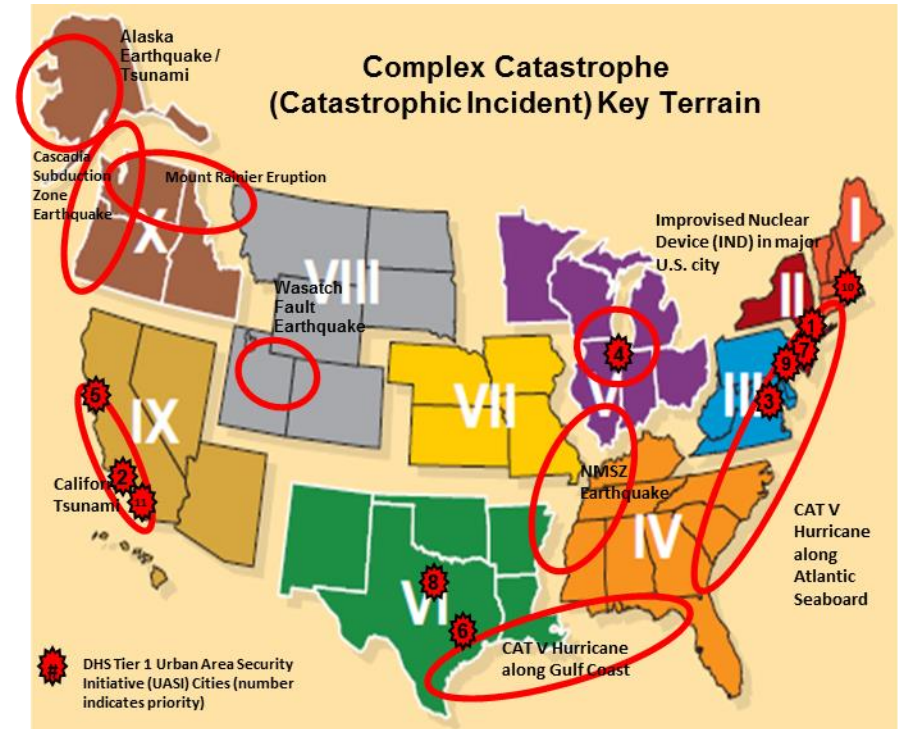
PSMA usage during 2017 Hurricanes:

- 658 used across 110 distinct PSMA's (many used multiple times)



Catastrophic Mission Assignments

- A new Mission Assignment concept stemming from Capstone 2016
- It is a combined effort among OSD, NORTHCOM, HHS and FEMA
- CMAs will expedite the review and approval process of these agency-specific resources
 - Strategic Air - Cargo
 - Tactical Air - Theater
 - USAR Support – Troops
 - CBRN Response Element
 - Disaster Medical Assistance (HHS)



USNORTHCOM disaster response planning is in support of DHS/FEMA and synchronized with State and Federal partners

FEMA Defense Coordinating Elements

Active, reserve, & civilian EPLOs facilitate coordination & support to activated ESFs at FEMA HQs & one at each Region

Single POC to DOD:

- LNOs at FEMA HQ to
 - OSD
 - NORAD/NORTHCOM
 - USACE
- Integrates DOD capabilities into incident response
- Coordinates Airlift/Sealift/Staging
- Supports planning & coordination
- With OSD approval, DOD provides Defense Support of Civil Authorities (DSCA)





FEMA

Questions?



FEMA

"Helping people before, during, and after disasters"

