



# Thailand Maritime Enforcement Coordinating Center (THAI-MECC)

# Thailand Maritime Enforcement Coordinating Center



Thai Navy



Fishery Dept.



Coastal and  
Maritime  
Resources Dept.



Marine Dept.



Marine Police



Customs Dept.

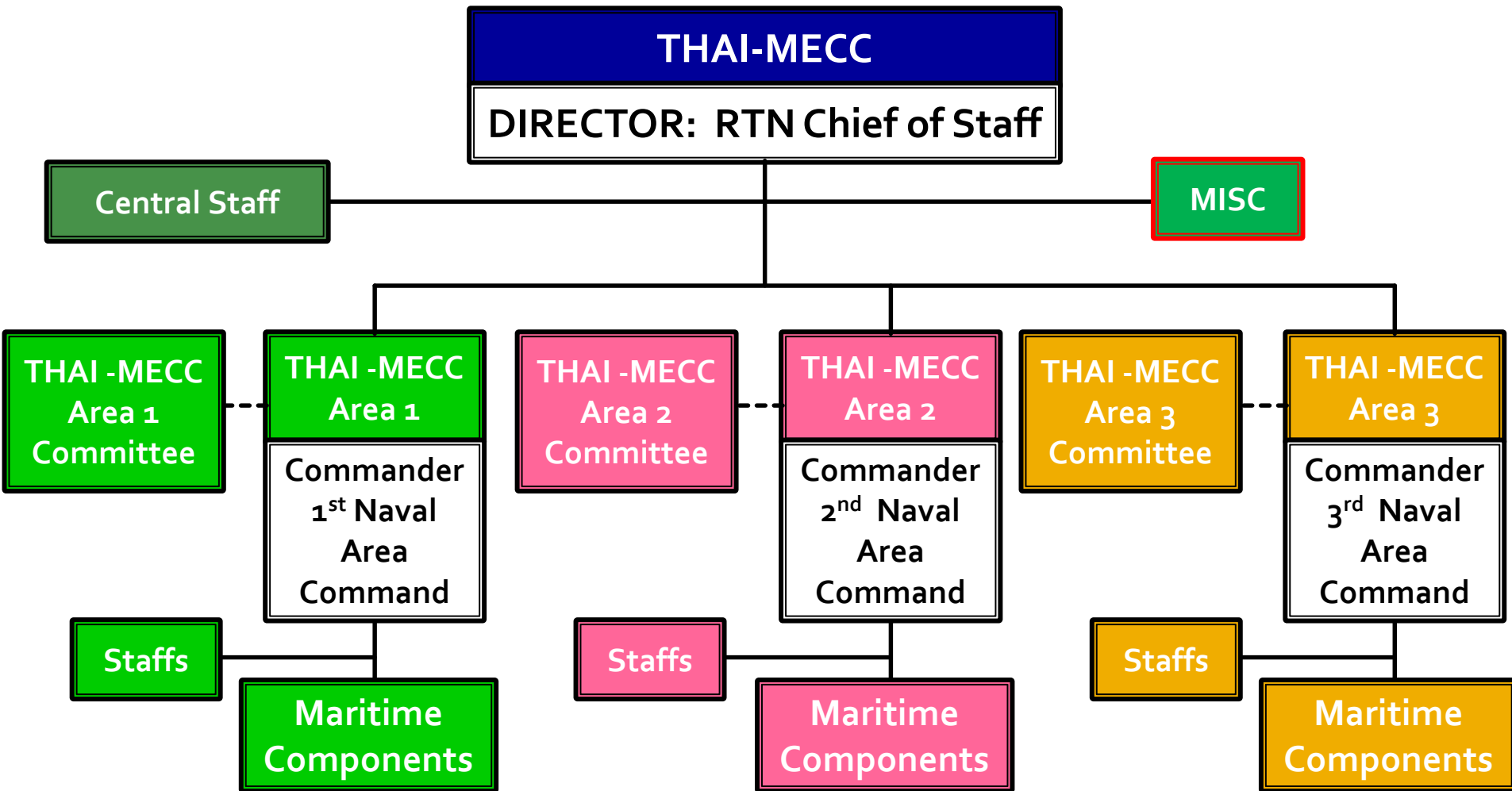
The National Security Council approved the establishment of the  
THAI-MECC in 1997

# THAI-MECC MISSIONS

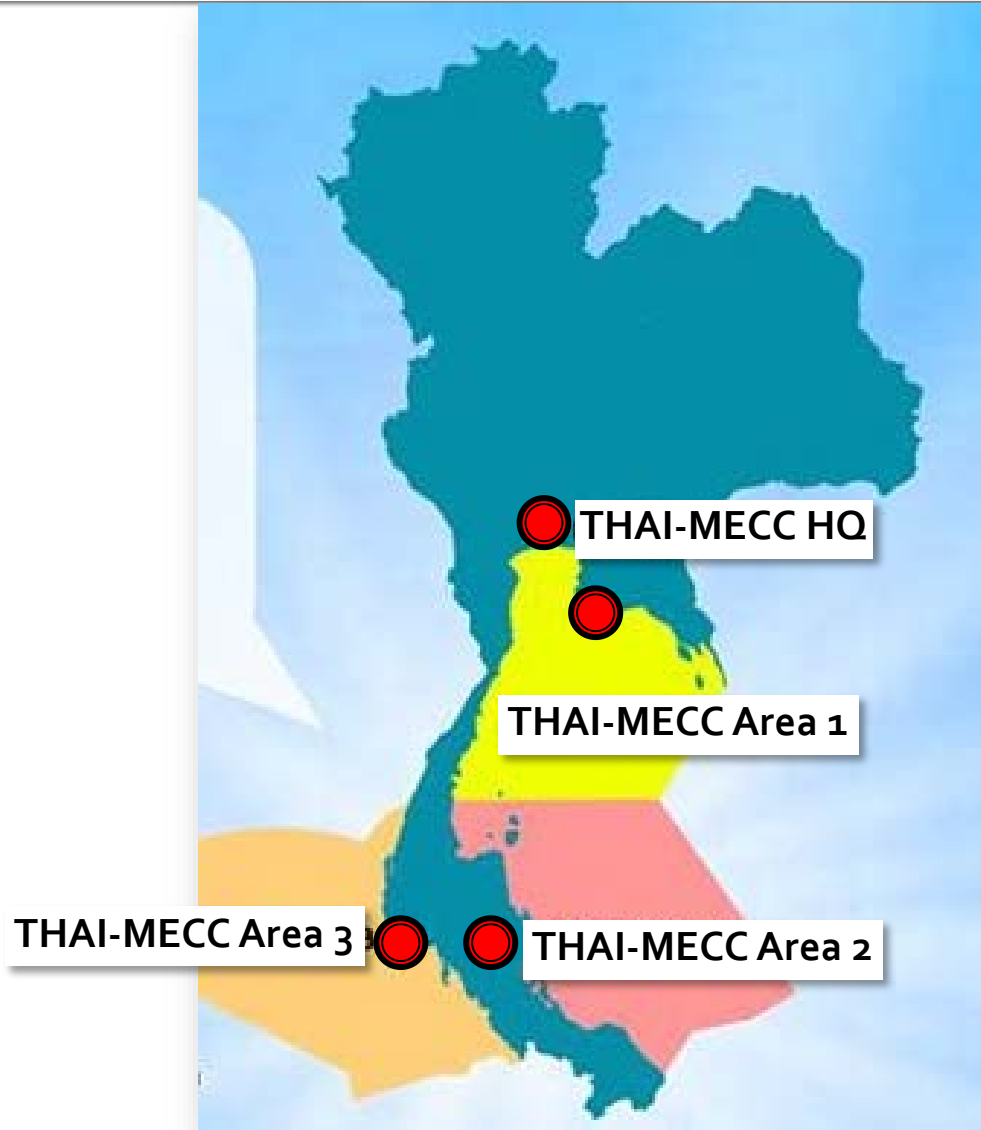


- **Collect, analyze, and share maritime information**
- **Coordinate on prevention, protection, and suppression of any illegal activities at sea**
- **Assist SAR at sea**

# THAI-MECC COMMAND STRUCTURE



# THAI-MECC AREA OF RESPONSIBILITY





# THAI MARITIME ENFORCEMENT COORDINATING CENTRE: THAI-MECC



**The Marine Police**



**The Royal Thai Navy**



**The Custom Department**



**The Marine Department**



**The Fishery Department**



**The Coastal & Maritime Resources Department**

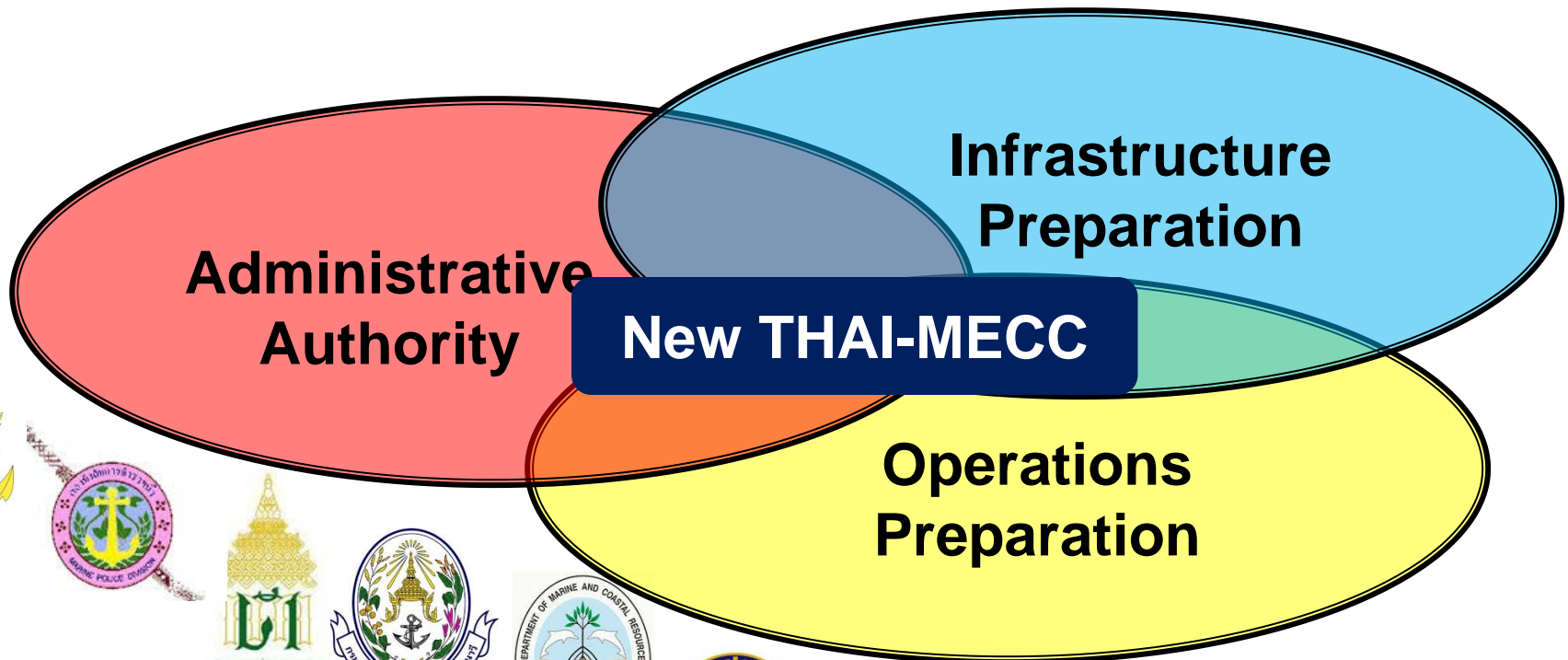
# Challenges: THAI-MECC 20 Years On

- Perform “coordinating role”
- Manning and resource challenges
- Friction on Institutionalization
  - to enhance Thai-MECC from “coordinator” to “director”

# Transition: The Road to new THAI-MECC



## Thai Maritime Enforcement Command Center



**New THAI-MECC**

**Administrative Authority**

**Infrastructure Preparation**

**Operations Preparation**







Marine Police

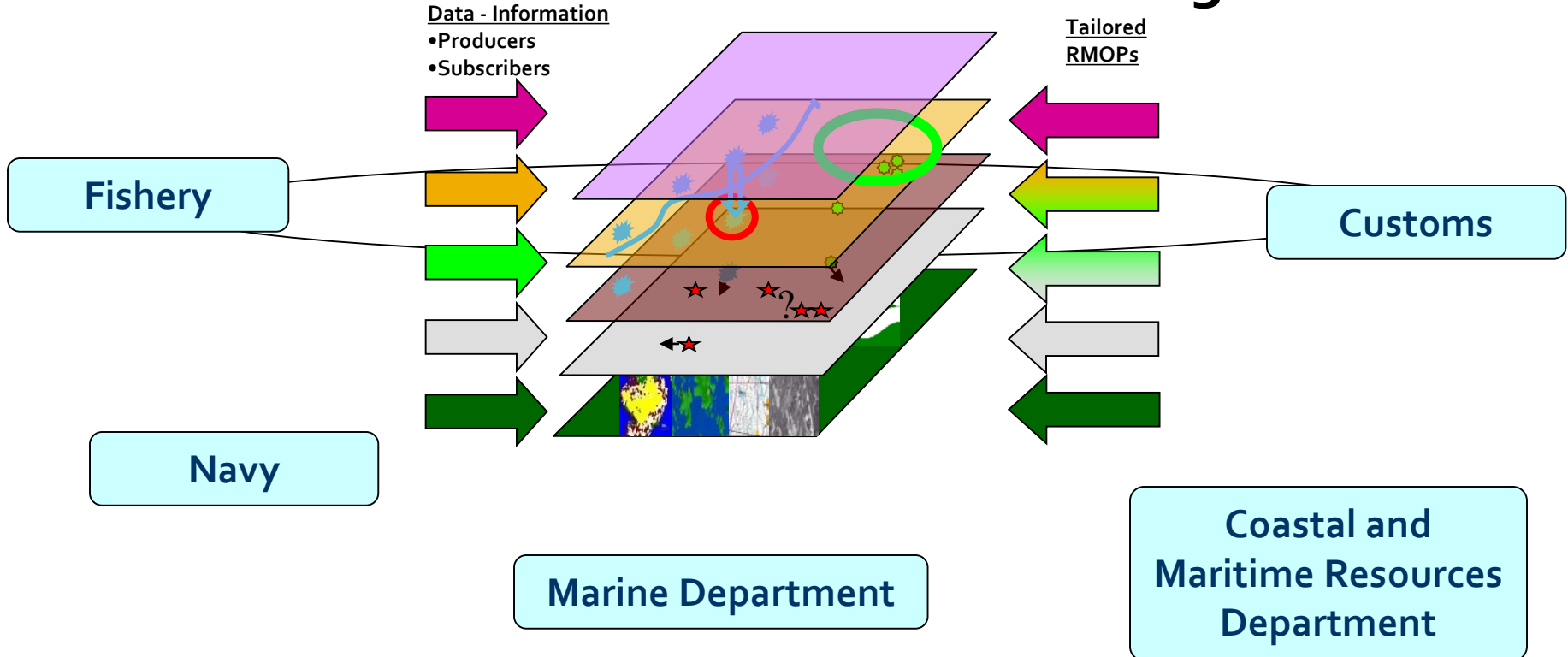
Related Agencies

## Thai MECC - Information Sharing

Data - Information

- Producers
- Subscribers

Tailored  
RMOPs



***The past practices and mindset have to be altered:  
Maritime Information Sharing Mechanism***

# International / Regional Collaborations



# Regional Information

# MISC Network

## Domestic

AIS/LRIT/VT  
MIS

Marine  
AIS  
Department  
RTN

Hydrographic  
VMS /  
Dep  
Fishing Info

DOF  
Ship  
position/Fishing  
vessel/Informati

Ship Position / Information  
on  
via email  
NAVY  
Intelligence

Ship Owner Association  
AIS

The Excise

Department  
National Single  
Window

Custom  
International  
Department

OASIS , ACESS II , IHS ships data & AIS Satellite

Gathering  
Process  
Display



Evaluate  
Disseminate

Standalone network  
MSP-IS, ReMIX, AMRS,  
MSSIS, CENTRIXS

## Operator

C<sup>4</sup>ISR RTN.

MISC

NAC  
MISC<sup>1</sup>

NAC  
MISC<sup>2</sup>

NAC - 3  
MISC Marine

Police  
MISC Marine

Dep  
MISC

DOF  
MISC

Custom  
MISC  
Marine &

Coastal



# Summary

THAI - MECC  New THAI - MECC



# THAI-MECC



THAI-MECC



RTN



Fishery Depy



Coastal and  
Maritime resources



Marine Dept



Marine Police



Customs

## ■ Ongoing Legislation

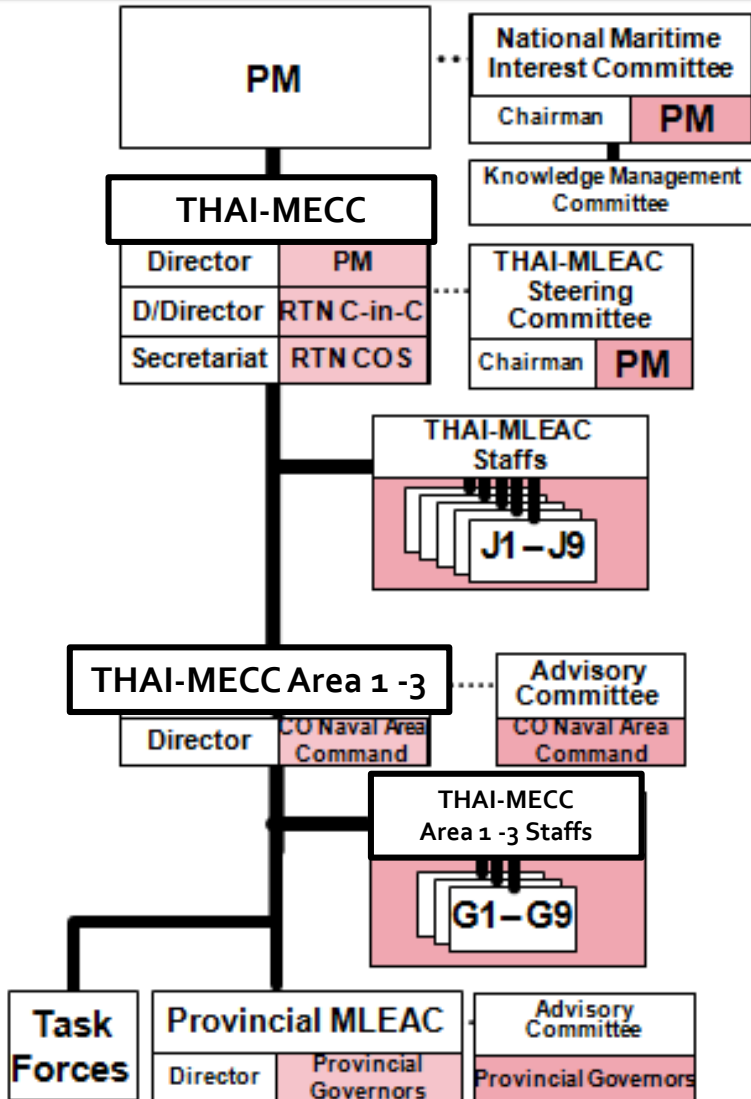
- Ongoing Legislation To date, handled by Council of the State before presenting to The Cabinet for submission to the National Assembly
- Expectedly be enacted by the National Assembly in May 2018

## ■ Significant mechanism improved by the Bill

- Enhance closer and efficient maritime security management
- Tactical Control of maritime assets
- THAI-MECC Officers will be empowered to search, arrest, investigate and make a case for indictment

# COMMAND STRUCTURE

## THAI-MECC



### Structural Reform

- Director: Prime Minister
- Deputy Director: RTN C-in-C
- Multi-disciplinary organization, include maritime task forces
- Central Staffs: manage in operation and intelligence
- MISC

# FUTURE THAI-MECC

- Once THAI-MECC Act of comes into force, THAI-MECC is able to
- work side by side with other nations' coastguard, not only with THAI agencies , through Thai-MECC liaison officers from interested countries.
  - Share maritime information among partnering countries.
  - Support ASEAN Maritime Task Forces, as assigned,
  - exercise maritime law enforcement in responsible area with partnering agencies in the future.



Q & A

---