



# TRILATERAL MARITIME SECURITY COOPERATION INDONESIA-MALAYSIA-THE PHILIPPINES

M. Chandra W. Yudha

Director for ASEAN Political Security Cooperation  
Ministry of Foreign Affairs of the Republic of Indonesia

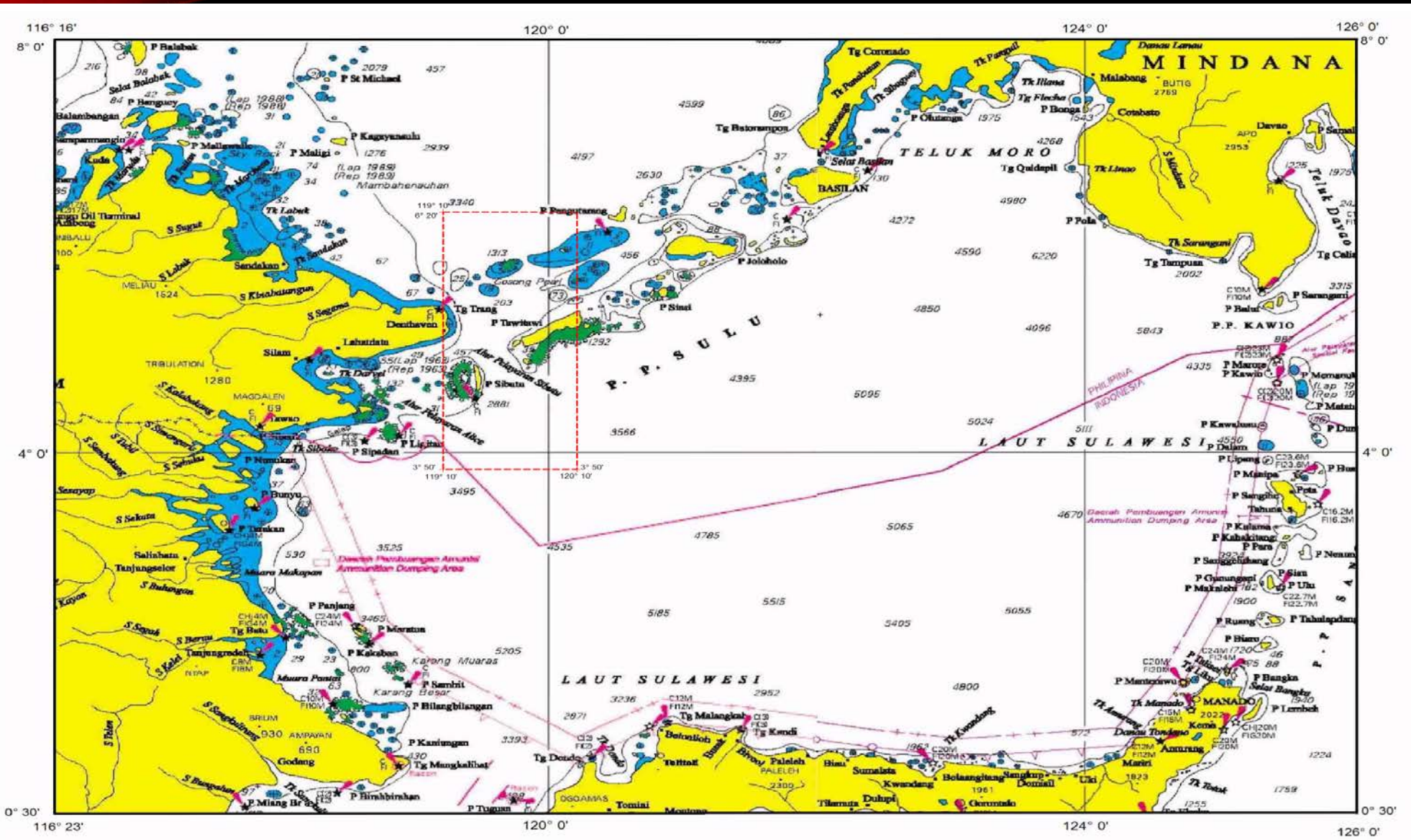


# I. BACKGROUND

# BACKGROUND

- Numerous maritime security threats and challenges
  - Traditional and non-traditional
  - Threats to national security, marine resources, and safety of navigation
- Measures to address maritime security threats and challenges:
  - A holistic, comprehensive and integrated approach at every level.
  - Continue to actively participate in various bilateral, regional and multilateral forums
  - Sharing best practices, developing CBMs, capacity building programs

# AREA PRONE TO ARMED ROBBERY AT SEA:





## II. TRILATERAL COOPERATION

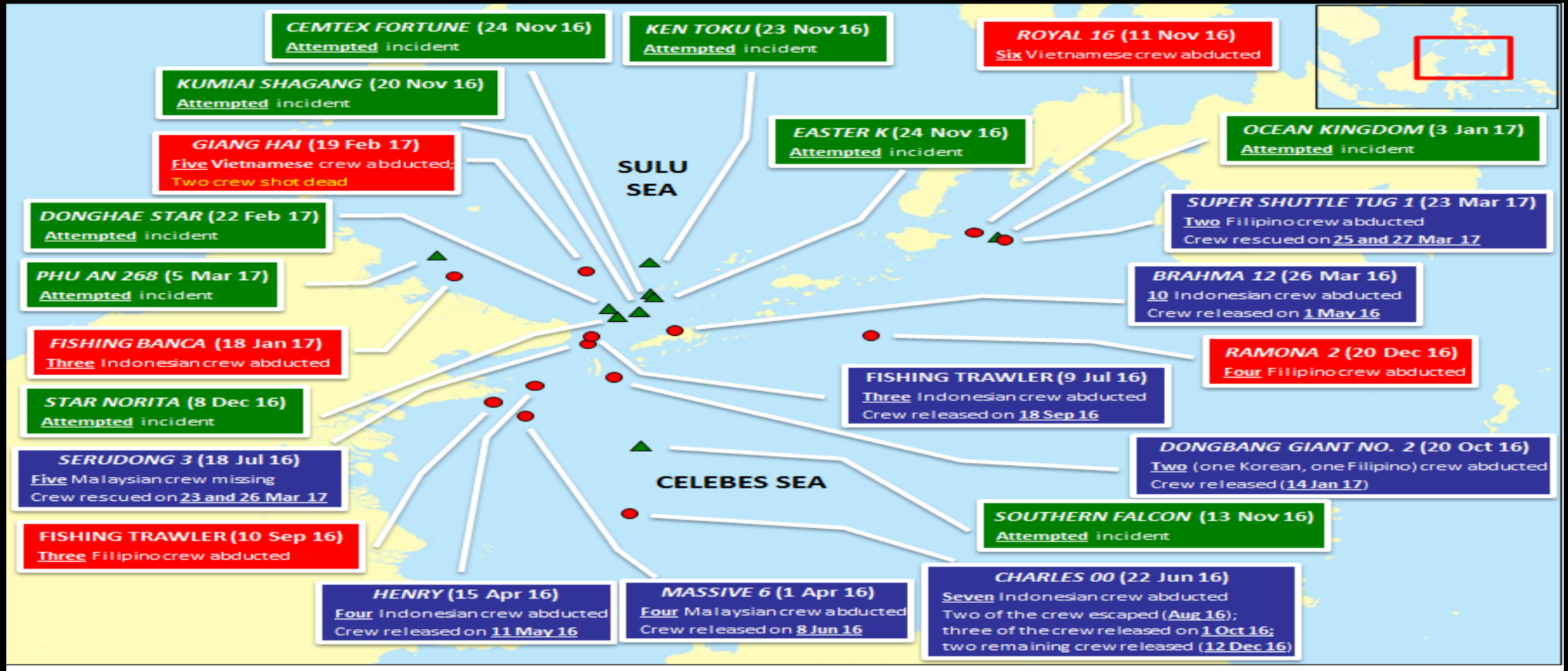
# COLLECTIVE POLITICAL COMMITMENT

- Coordinated patrol inaugurated on June 19, 2017
  - To address widespread maritime threats i.e. armed robbery at sea around Sulu
  - Initiated by Indonesia
  - Established among Foreign Ministers and Defence Ministers of Indonesia, Malaysia and the Philippines
- Regional commitment to ensure maritime security especially combating piracy/armed robbery
  - Maintaining regional image
  - Prevention internationalization (Somalia Precedent)
  - Increase patrols, establish national focal points, set up hotline communications
- *ASEAN flavor –consensus based approach (in the form of Joint Statement).*

# FORMS OF COOPERATION

- Maritime security cooperation: *regular patrols, coordinated patrols, and joint patrols*
  - On technical level: confirmation of area of operation
  - Preparation of Standard Operating Procedures
- Establishment of the *lines of communication and maritime command center*
- *Transit Corridor* to secure line of navigation by sea convoy

# MAP OF ACTUAL AND ATTEMPTED ATTACKS IN SULU SEA AREA 2016-2017





# ACTUAL ATTACKS IN SULU SEA AREA 2016 – 2017

No	2016	2017
1	Tugboat Brahma & Barge Anand 12 (26 March)	Fishing Banca (18 January)
2	Tugboat Massive 6 (1 April)	Gai Hai (19 February)
3	Tugboat Henry and Barge Christi (16 April)	Super Shuttle (23 March)
4	Tugboat Charles 00 (22 June)	
5	Fishing Trawler (9 July)	
6	Tugboat Serundong 2 & Barge Serundong 3 (18 July)	
7	Fishing Trawler (10 September)	
8	Dong Bang Giant (20 October)	
9	Royal 16 (11 November)	
10	Ramona 2 (20 December)	

# COMMAND STRUCTURE

- Joint Coordinated Patrols : under the command of the Chiefs of Armed Forces of Indonesia, Malaysia and the Philippines.
- Technical operation : under the command of the relevant Territorial Chiefs of the 3 countries.
- Daily operation : under respective *Maritime Command Centers*
- The establishment of *Trilateral Coordinated Patrol Working Group (TCPWG)* as the *Policy Making Organ*

# OTHER FORMS OF COOPERATION

- Prevention of illegal movements (person, arms and munitions) in line with the international obligation.
- Exchange of intelligence information on terrorism (communication channel)
- Law enforcement cooperation,
- Humanitarian assistance,
- Existing framework (joint statement 22 June 2017)



**THANK YOU**